

*Inspiring Personalities.*



**Life at EBS**

# Be a part of it!

VINEA Fitness&WellnessPark  
[www.facebook.com/vinea.fitness](http://www.facebook.com/vinea.fitness)

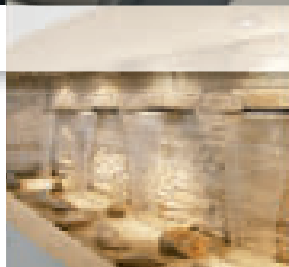
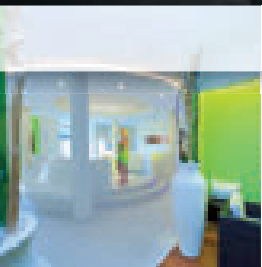
- **SEIT ÜBER 20 JAHREN**  
der Nr. 1 Fitnessclub bei den EBS-Studenten
- **KEINE STARTGEBÜHR\***  
Studienangepasste Laufzeiten
- **SCHNELL ERREICHBAR**  
nur 3,9 km von der EBS
- **ALL INCLUSIVE**  
Fitness, Kurse, Sauna,  
Chipgesteuertes Training,  
Mineralgetränke-Flatrate



Scan mich!

Info Hotline  
06723-6035222

\*Zu zweit anmelden und Startpaket sparen, gilt nur bei Erstanmeldung.



Vinea Fitness&WellnessPark  
Kirchstraße 75 · 65375 Oestrich-Winkel  
Telefon 06723-6035222 · [www.vinea-fitness.de](http://www.vinea-fitness.de)

 VINEA  
Fitness&WellnessPark

inspiration

Life at EBS



## TO SEE OR NOT TO SEE THAT'S THE KEY TO SUCCESS!

LOOKING FORWARD TO SEEING YOU:

WILHELMSTRASSE 42  
D-65183 WIESBADEN  
TEL. 0611-300311  
WWW.GABRICHOPTIK.DE



# Wer fördert was?



FÖRDERINSTITUTIONEN UND  
-PROGRAMME, FORSCHUNGSTIPENDIEN  
UND WISSENSCHAFTSPREISE

560 Seiten · A5  
19,90 EUR  
ISBN 978-3-9815271-0-0

Konzeption, Redaktion, Texte:  
**Dr. Dieter Herrmann** und  
**Dr. K. P. Christian Spath**

Geleitwort:  
**Prof. Dr. Andreas Schlüter**  
Generalsekretär des Stifterverbands  
für die Deutsche Wissenschaft

## Handbuch Drittmittelförderung 2013-2014

Drittmittel spielen in Wissenschaft und Forschung eine zentrale Rolle. Die ALPHA Informationsgesellschaft hat auf 560 Seiten die aktualisierte Dokumentation aller Fördermöglichkeiten für Wissenschaft und Forschung für 2013-2014 herausgegeben. Experten mit jahrzehntelanger Erfahrung in der staatlichen und außeruniversitären Forschungsverwaltung haben ein umfassendes Nachschlagewerk erstellt, das alle Förderquellen aufzeigt und für jede Art von Antragsstellung und Bewerbung wichtige Ratschläge gibt.

Es gibt in Deutschland eine Vielzahl von Förderprogrammen, die sich an den wissenschaftlichen Nachwuchs (Promotions-, Postdoc- und Rehabilitationsstipendien), an Frauen in der Wissenschaft (z.B. Wiedereinstiegsstipendien), an etablierte Wissenschaftler/innen (z.B. Forschungsaufenthalte im Ausland) oder an wissenschaftliche Institutionen (z.B. Stiftungsprofessuren) wenden. Die Spannweite reicht von europäischen Förderprogrammen und nationalen Förderinstitutionen bis hin zu vielen privaten Stiftungen. Darüber hinaus gibt es mehrere hundert staatliche und private Förderer, die Mittel bereitstellen für ein geplantes Forschungsprojekt oder für die Zusatzausstattung eines bereits laufenden Vorhabens, für Fachkongresse, Symposien und Workshops, den Aufbau einer Forschergruppe oder einer internationalen Forschungs-kooperation, für Druckkosten oder digitale Publikation, für Gastprofessuren oder die Einladung eines ausländischen Kollegen.

Alle Fördermöglichkeiten zu kennen ist das eine, sie auch erfolgreich zu nutzen das andere. Deshalb enthält der Ratgeber zahlreiche Kapitel über die optimalen Antragsgestaltung, Musterverträge für die Wissenschaft und über Besonderheiten bei der Antragsstellung für europäische Förderprogramme, aber auch über die Möglichkeiten des Sponsorings, über Patente und Lizenzverwertung. Zur wissenschaftlichen Karriere gehören auch Wissenschaftspreise und Forschungstipendien. Auch hier beschränkt sich das Buch nicht auf die Auflistung der wichtigsten Forschungstipendien und Wissenschaftspreise, sondern gibt umfassende Hinweise für eine Selbstbewerbung oder eine Nominierung durch Dritte.

Die Recherche für Fördermöglichkeiten wird durch ein Institutionen- und Schlagwortregister erleichtert.

Das Geleitwort hat der Stifterverband für die Deutsche Wissenschaft übernommen.

Der Ratgeber kann zum Preis von 19,90 EUR unter der ISBN-Nummer 978-3-9815271-0-0 über den Buchhandel bezogen werden – oder direkt vom Verlag:

**ALPHA** Informationsgesellschaft mbH  
Susanna Paulin  
Finkenstraße 10 · 68623 Lampertheim  
Telefon: (0 62 06) 939-210  
Telefax: (0 62 06) 939-243  
E-Mail: paulin@alphapublic.de

# Contents

## EBS Universität

- 6 Welcome to EBS Universität
- 7 Milestones
- 7 EBS Foundation
- 8 EBS Business School
- 9 EBS Law School
- 10 Management Board
- 12 EBS Alumni
- 14 Responsibility
- 16 EBS Network
- 18 Career Services Centre
- 19 Coaching
- 20 Language Institute
- 22 Academic Services
- 27 EBS Events

1

## EBS Business School

- 32 Welcome to EBS Business School
- 34 Departments at EBS Business School
- 57 Directorate Education at EBS Business School

2

## EBS Law School

- 62 Studying Law at EBS
- 63 Who is who at EBS Law School
- 66 Legal Studies at EBS Law School

3

## Campus locations

- 72 University Facilities and the Learning Environment

4

## Student Body

- 76 The Student Body at EBS
- 78 Extracurricular Commitment at EBS
- 79 Student Ressorts at EBS
- 84 Social Commitment

5

## Campus Facilities

- 88 Library
- 89 Information Services
- 90 Web.Campus
- 91 myebs.de
- 92 EBS Housing Office
- 93 Sports at EBS

6

## Living in Wiesbaden & the Rheingau

- 96 Life in Wiesbaden
- 97 Life in the Rheingau
- 98 Nature
- 98 Sport
- 99 Festivals
- 99 Leisure & Culture
- 100 Food & Drink
- 100 Semester Ticket
- 101 RMV Transport Map

7

## International Students at EBS

- 106 International Programmes Office
- 108 Academic Calender Business School
- 109 Academic Calender Law School
- 110 Admissions Process for Exchange Students
- 112 General Academic Matters for Exchange Students
- 114 Academic Matters for Exchange Students at EBS Business School
- 117 Academic Matters for Exchange Students at EBS Law School
- 118 Housing Office
- 119 Campus Facilities
- 119 Visa and Residence Permit
- 126 Insurance and Health Care
- 130 Money and Banking
- 132 Phone and Internet
- 133 Cars and Transportation
- 135 Living in Germany
- 140 Emergency Numbers

8



inspiration

EBS Universität

1

## Welcome to EBS Universität für Wirtschaft und Recht



Professor Dr Dr Gerrick  
Frhr. v. Hoyningen-Huene  
Vice President  
Spokesperson for the  
University Executive Board

*With a history of over 40 years in higher education, EBS has long made a name for itself. With the establishment of EBS Universität our vision becomes reality: To establish EBS as one of the most modern and innovative universities in the field of business and law and among the leading universities worldwide. Our University aspires to the*

*highest international standards of excellence in research, education and academic consulting services. The many diverse synergies at the interface between our Business and Law School clearly set us apart from the competition in Germany and give us a strong competitive edge on an international level – both essential requirements to achieving a top tier position in the international education market.*

*A university will only be able to guarantee an education that will produce first-class, re-*

*sponsible and creative executives, lawyers and managers when, from the outset, in addition to equipping students with expert knowledge it fosters individual personal development and the ability to work in teams and as part of a complex network. This is what sets EBS apart and makes studying at EBS such an attractive proposition.*

*Systematic investment in the expansion of internationally competitive research activities, research stays abroad and participation in high-calibre international conferences reinforce our network of top-class institutions across the world and enlarge our spectrum. It is the individual, social competence and integrity of graduates from leading universities that is of paramount importance for the stability and success of societies.*

*We are committed to these objectives – they represent both a challenge and an opportunity for EBS graduates. It is a privilege for faculty and staff members at EBS Universität to work together with students and course participants in a process of lifelong learning that is characterized by excellence in research, teaching and executive education.*

EBS stands for:



### Responsibility

We provide an excellent and all-embracing education to produce responsible individuals.



### Internationality

We think, act and orientate ourselves globally.



### Network

We offer a unique network.



### Excellence

We set the highest standards in education, research, and academic consultancy services for business-relevant topics.



## Milestones

1971	Founding of European Business School (EBS) in Offenbach	2011	Granted status and designation as EBS Universität für Wirtschaft und Recht
1977	Start of executive education activities		Start of the first academic year at EBS Law School
1993	Right to confer doctoral degrees		Right to confer doctoral degrees and post-doctoral (professorial) qualification extended to EBS Law School
1998	Right to confer post-doctoral (professorial) qualifications	2012	EBS Business School receives prestigious international EQUIS accreditation
2000	First award of MBA dual degrees in cooperation with international partner universities		EBS Universität für Wirtschaft und Recht awarded accreditation by the German Council of Science and Humanities
2004	First higher education institution in Germany to complete the transition to Bachelor's and Master's programmes		
2007	Launch of the continuing Master's programmes		
2008	Launch of the EMBA programme in cooperation with Durham Business School (UK)		
	Launch of the MBA programme		
2009	Establishment of the House of Logistics & Mobility (HOLM)		
2010	Founding of EBS Law School		
	FIBAA accreditation for Law degree programme		

## EBS Foundation

The non-profit Foundation is the sole shareholder of EBS. The Foundation Board of Trustees is responsible for all matters relating to the Foundation. The Board exercises its rights within EBS Universität and appoints members to EBS Universität's Supervisory Board.

Members of the Foundation Board of Trustees include high-profile figures from industry and society. Together they constitute a representative supervisory body that gives EBS Universität access to a top level national and international network.

## EBS Business School

### The top address for tomorrow's managers

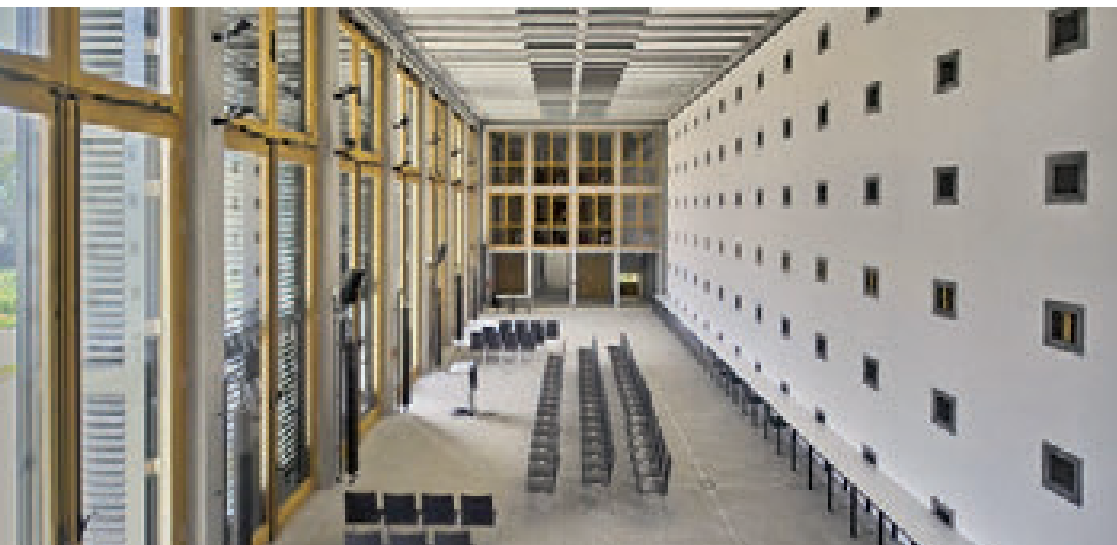
- One of the largest business and management studies faculties in Germany
- Over 35 senior and assistant professors and more than 30 adjunct and honorary professors
- Over 1,300 degree students (20% international), plus 170 doctoral students and 170 international exchange students.
- Approx. 300 new students per year in the Bachelor's (BSc) and 150 in the Master's and MBA programmes
- Student-teaching staff ratio 33:1
- Studium Universale and coaching programme offered to all students and doctoral candidates
- 200 partner universities worldwide
- 200 corporate partners, many DAX-listed
- One of four EQUIS accredited business schools in Germany (since 2012)
- Twelve business languages taught by 30 native speakers

Integrity, loyalty, reliability and responsibility have reached a new level of significance in society today.

Motivated by our motto "*Inspiring Personalities.*" and as the oldest and one of the most reputable private business schools in Germany, EBS feels a strong responsibility to embrace ethical behaviour. Our mission is to educate tomorrow's top global managers by delivering outstanding research performance and excellent teaching combined with high practical relevance. Although EBS is constantly changing and developing, we remain true to our values and principles and our commitment to promote ethical business practice. We shall continue to move forward in this typical EBS spirit.



FIBAA



## EBS Law School

### The legal studies programme for entrepreneurial-minded law students

- Founded in June 2010, EBS Law School is the second private law school in Germany
- 2011: EBS Law School goes into operation with 88 students; 2012 second intake with more than 115 students
- Eight renowned professors
- Student-teaching staff ratio 24:1
- Special feature: A traditional law degree programme (state examination) supplemented by a business studies degree (Master in Business)
- Three high level qualifications in less than five years: First state examination (Staats-examen), Bachelor of Laws (LLB) and Master in Business (MA)
- Twelve business languages taught by 30 native speakers
- Studium Universale and coaching programme open to all students and doctoral candidates

### Make law your profession

The banking sector, industry organizations, (international) law firms, public authorities and government ministries urgently need legal professionals with an excellent business education. At the same time the increasing complexity of global markets presents a growing challenge for future lawyers and legal professionals. This means that legal studies programmes must cater to new demands. The programme offered by EBS Law School meets these changing needs. We are the first and only university in Germany to offer a fully-fledged traditional law degree programme with a clear focus on business law. Under the direction of the Dean, Professor Dr Dr Gerrick v. Hoyningen-Huene, our Law School combines law with business studies and delivers top level research, teaching and executive education of high practical relevance, not only in the legal field but also at the intersection of business and law.



## Management Board



*Georg Nikolaus Garlichs  
Chancellor and CFO  
EBS Universität für  
Wirtschaft und Recht*

As Chancellor/CFO, Georg Nikolaus Garlichs is responsible for finance and accounting, financial control, facilities/buildings, HR and legal affairs. He has several years of experience as managing director/CFO in medium-sized companies and more than 10 years experience as financial director/head of financial control in group companies.

After studying business and economics in Passau, Georg Nikolaus Garlichs studied international business and management in Berlin, Oxford and Paris graduating with a Diploma in Business Studies, a Diplôme de L'École Européenne des Affaires and a European Master of Management.

In line with the values EBS stands for, Internationality, Network, Excellence and Responsibility, and committed to its mission of educating the managers who will lead tomorrow's global markets, EBS aims to consistently deliver excellent teaching combined with high practical and international relevance as well as superior research performance.

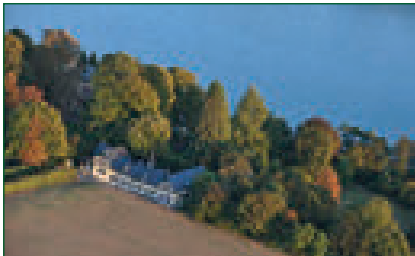
Together with outstanding colleagues, students, and partners in Wiesbaden we are committed to developing a university with a focus on the core areas of business and law and with an academic reputation, open mindset and contributions to public discourse EBS can be proud of.



*Olaf Bernd Güllich  
Managing Director and COO  
EBS Universität für  
Wirtschaft und Recht*

Appointed Managing Director/COO in April 2013, Olaf Bernd Güllich oversees communication, marketing, student services, international relations and IT services.

After studying Business Administration with a focus on marketing and international management in Hamburg, Olaf Güllich began his career at VELUX GmbH. He assumed a variety of positions, including marketing manager, before switching to consulting, where he was involved with a number of nationally and internationally renowned consulting firms – as project manager and later as Managing Partner. Olaf Güllich also has several years management experience in industry.



## Exklusive Ferienwohnungen im Rheingau

Barbara Jung . Diplom Betriebswirtin  
 Villa Belmonte . Wallufer Straße 61 . 65343 Eltville  
 Tel.: ++49 (0) 6123 605403  
 Fax: ++49 (0) 6123 900490  
 Mobil: ++49 (0) 174 3168866  
 E-Mail: barbara.jung@rheinberg-belmonte.de

[www.rheinberg-belmonte.de](http://www.rheinberg-belmonte.de)



In der Region - für die Region.

**Unsere Kunden...**  
*...wollen hoch hinaus!*

[www.rheingauer-volksbank.de](http://www.rheingauer-volksbank.de)

**RHEINGAUER**  
 VOLKS BANK   
 nah | direkt | persönlich



Kontakt: Annika Stenzel  
 Tel.: 0611/7245805  
 Mobil: 0163/3908801  
 E-Mail: stenzel@wfs-wiesbaden.de

Unser Wohnheim liegt im Wiesbadener Wohngebiet „Auf der Heide“ und bietet dort die perfekte Mischung aus idyllischer Lage und guter Anbindung an die Stadt.

Wir bieten sowohl möbilierte als auch unmöblierte Einzelzimmer innerhalb von Wohngemeinschaften an.

Die Bewerbung um ein Zimmer kann ausschließlich über das Internet vorgenommen werden.

Weitere Infos finden Sie unter [www.wfs-wiesbaden.de](http://www.wfs-wiesbaden.de)

## EBS Alumni



Gabriele Pfandl  
 Head of Alumni  
 Management  
 Phone +49 611 7102 1678  
 gabriele.pfandl@ebs.edu

### Alumnus

(plural: alumni; lat.: “pupil”, from alere, “nurture”, “raise”) was originally a male former student of a school.

The female form of alumnus is alumna. In English and German speaking countries alumni are former pupils and students.

After completing their studies at EBS, our graduates maintain close contact with each other and their School. EBS Universität has one of the largest alumni networks in Germany and around 10,000 alumni worldwide. These include graduates from degree programmes and our non-degree programmes (certificate and executive education). Networking plays a very important role at EBS.

Many alumni are closely involved with the University and are engaged in activities as observers in the student selection process, guest lecturers or project supervisors. In return, they themselves benefit from “their” University’s various offerings. Already during studies they receive individual support from the University:

- Professional counselling by the Career Services Center (internships/job applications)
- Financing support, for instance through scholarships
- Opportunity to participate actively in campus projects
- Mentoring/coaching

EBS continues to accompany its alumni after graduation, and every alumnus is welcome to play an active role in shaping the future of our University.

EBS Alumni organization offers a wide range of services including the following:

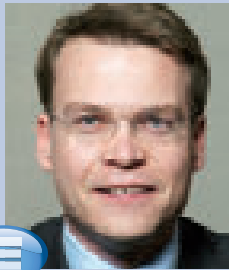
- Lifelong access to our Career Services Center
- Special conditions for a number of continuing education offerings
- Access to the EBS Alumni Portal, which provides the latest information and ideal networking opportunities

As ambassadors, supporters, and spokespeople for EBS, our alumni are invaluable and essential for the further development of our University. Any questions? Please come and see us! We look forward to your visit!

## EBS Alumni Association

EBS Alumni is the oldest and most prominent of all business alumni associations in Germany. It was founded in 1980 by a group of EBS first alumni. Today, the community includes more than 3,200 members from all EBS graduate classes since 1975. Our members live and work in over 30 countries and for diverse organizations throughout the world – from Seattle to Sydney, from Google to Siemens.

Some of Europe's leading executives are actively engaged in our network. Together with other premium partner associations we form the global Alumni Alliance (that we initiated in 2008) and open our networks and events to our partner members from Harvard, INSEAD, Stanford, Hochschule St. Gallen, Katz Business School in Pittsburgh, and the WHU. Each year we provide material and non-material support to more than 400 students.



Dr Nikolaus Weinberger  
(EBS Class of 2000)  
Executive Director, Goldman, Sachs & Co. oHG  
Organization & Leadership

*EBS gave me the opportunity to take a broad-based generalist course and at the same time the chance to develop my own specific interests through specializations.*

*During my studies I came into contact with the company I work for today. Goldman Sachs has been recruiting EBS graduates for several years and has supported the university at a number of events. Goldman Sachs is always looking for talented, highly motivated and flexible students with an international perspective. And EBS offers the best environment.*

*"It's been over 10 years since I took my degree at EBS, yet I still enjoy looking back to my student days.*

*Besides the obvious advantages EBS offers, such as performance-oriented degree courses, semesters abroad, excellent teaching, and optimal support from the faculty, "soft factors" such as extracurricular activities, internationality and teamwork had a very formative influence. I became friends with a lot of fellow students who I am still in close contact with today.*

*I would be delighted to meet some of you at upcoming events at EBS. I wish you an exciting start to your studies and a great time at EBS."*

## Responsibility

Part of what makes EBS special is our strong focus on questions relating to responsible behaviour. In our teaching we express this in a variety of ways, which are outlined below. A number of institutes and chairs at EBS are concerned with sustainable and responsible management. In addition to the Institute for Business Ethics these include the Chair of Sustainable Logistics and Supply Chain Management, the Center for Social Innovation and Social Entrepreneurship, the Center for Disability & Society and the recently founded Institute for Transformation in Business and Society (INIT). Yet, EBS traditional focus on responsible behaviour and philosophical issues goes back a long way. Why do we at EBS place such a strong emphasis on philosophy? Let us take a closer look at some of the reasons.

Assuming you knew your child's profession in later life. Would you today be in favour of your child's schooling focusing entirely on this future career? For example, imagine your child was later going to be employed in research and development in the automotive industry. Should, in this case, English lessons focus exclusively on teaching what is needed for this profession and neglect subjects such as literature or art? Whatever your answer, customizing lessons to cater to a future career would come at a great price.

What exactly is this price? The first interesting point is that human beings are usually not indifferent to the way the world works (and the way we ourselves work). As Aristotle said, people strive by nature for knowledge. Take a look at a child whose toy is broken. What does the child do? It tries to find out why. Here you can see the significance of human curiosity. In Brecht's words, knowledge acquisition is an enjoyment. If, on the other hand, a person is no longer thrilled by anything and shows, for

instance, absolutely no further interest in gossip (a lower form of curiosity), then something is wrong. This is a fact of life, just as rain falls down and not up. Therefore, tailoring lessons amounts to restricting our possibilities, which equates to restricting our natural inclinations. It is a type of self-mutilation. Only if our life were different to the way it actually is, would it be possible to prepare children more effectively for their professional life by limiting lessons. For instance, if we were to stop listening to music, stop experiencing the natural enjoyment of wordplay, poems, great literature, and were no longer to decorate our houses, etc.

Now it should really be fairly obvious, why we teach philosophy and ethics at EBS, although hardly any of you will go on to make it your future career: Even what we generally refer to as "expert knowledge" comprises more than what some people understand by the term, aside from the fact that being human means more than just pursuing a career.

Of course, the economic crisis also plays a critical role. The talk today is all about greed, disintegrating values, etc. Is, therefore, this crisis a moral one? Let us assume your child shows all the signs of greed. What do you do? Well, ultimately you set up rules and make sure they are complied with. So now, what has caused the crisis? Greed or the absence of rules, control mechanisms and corresponding institutions? Admittedly, providing an answer to this question will not necessarily make things easier for you. Indeed, it is not clear a priori that being ignorant and happy is worse than being aware and unhappy. But it is, after all, also not clear a priori that it is better. Given that in this case you are at university, do you really want to ask why you are going to be dealing with, among other things, philosophy and ethics?



At EBS we have an extensive philosophy programme. We start with logic, the theory of science and the philosophy of language. We then move on to the principles of ethics, political and legal philosophy, to arrive at questions surrounding business ethics and the meaning of life. We aim to adequately prepare you for things which, before you decided to study at EBS, you might not have known to be so important for life. We are aware of these issues and you should be too, if you aim to achieve your full potential.

We teach ethics at EBS in a variety of forms. First and foremost, the “Studium Universale”, a course in philosophy, but we offer more:

- “*Educare*” and “*Do It!*” where students become involved in real life projects
- “Principles for Responsible Management Education”
- Courses such as “Corporate Social Responsibility”, “Cross-Cultural Communication and Management”, “Sustainability” etc. provide additional skills and knowledge.

Finally, shortly before final year students graduate, they assemble to take the Management Oath, which outlines the values and ideals to which responsible managers are committed. The Management Oath is a public confession of what our students stand for.

### Institute for Business Ethics



*Dr Marcus Kreikebaum*  
Phone +49 611 7102 1424  
[marcus.kreikebaum@ebs.edu](mailto:marcus.kreikebaum@ebs.edu)



*Dr Max Urchs*  
Phone +49 611 7102 1436  
[max.urchs@ebs.edu](mailto:max.urchs@ebs.edu)

### Institute for Transformation in Business and Society (INIT)



*Professor Dr Richard Raatzsch*  
Phone +49 611 7102 1427  
[richard.raatzsch@ebs.edu](mailto:richard.raatzsch@ebs.edu)



*Professor Dr Peter Russo*  
Phone +49 611 7102 1455  
[peter.russo@ebs.edu](mailto:peter.russo@ebs.edu)

## EBS Network

### A strong network

EBS international partner network boasts not only a high number of partner universities but also a high level of quality and includes:

- at least one of the top three business schools in 23 of the 30 most important economic countries (acc. to GNP) that account for nearly 90% of the world's GNP and 65% of the world's population,
- at least one, but generally two or three of the top 3 business schools in 13 of the 15 most important emerging markets (ranked acc. to the Economist).

### International Relations

Internationality is of paramount importance at EBS Business School and EBS Law School. We are therefore consistently working towards expanding our international exchange network, not only geographically but also in terms of the number and quality of member universities. In addition to academic excellence as the fundamental requirement, regional diversity and a strong track record in special programmes are the decisive criteria for building new partnerships around the world. Our cooperation activities include not only student exchange and exchange among teaching and research staff, but also joint research projects and dual degree programmes. Our extensive network of more than 220 partner universities around the globe enables EBS students to study for at least one semester in one of 54 different countries.

Careful assessments are made to ensure that these institutions meet EBS standards and aspire to similar goals with regard to fostering a student's personal development both from a professional and personal perspective.

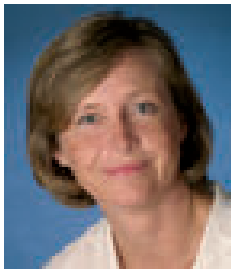
Each year, EBS International Relations Department organizes summer programmes on European business and the law of the European Union for international students from all over the world. EBS Summer Schools are conducted entirely in English and comprise three parts: Lectures & Case Studies, Company Visits and Social Activities. Special programmes lasting several days or weeks on undergraduate and postgraduate level can be arranged and organized for student groups of all sizes.



*Axel Schumacher  
Associate Dean  
International Relations  
Phone +49 611 7102 1767  
axel.schumacher@ebs.edu*



*Petra Soltau  
Assistant to the  
Associate Dean  
Phone +49 611 7102 1768  
petra.soltau@ebs.edu*



*Ursula Haque  
Programme Manager  
Summer Schools  
Phone +49 611 7102 1743  
ursula.haque@ebs.edu*



*Michelle Staniczenko  
Programme Coordinator  
Law Summer  
Phone +49 611 7102 1733  
michelle.staniczenko@ebs.edu*

EBS Business School offers two three-week summer programmes in May and June each year, and EBS Law School offers a four-week summer programme in June:

### **1. Business Summer – Bachelor & Master Session: “Doing Business in Europe”**

The first week of the Master’s & Senior Bachelor’s Summer School includes an introduction to Europe with lectures on economics, tax law, finance and cultural differences, as well as a crash course in German on the first day of the programme. The second week is all about selected key industries in Europe and features topic-related company visits. The third week usually starts with a visit to the European Parliament and ends with a 3-day business game simulation.

### **2. Business Summer – MBA Session “Successful Leadership in Europe”**

The first week begins with a German crash course and a team building event, followed

by an introduction to Europe with lectures on economics and business ethics and a visit to the European Central Bank in Frankfurt. The second week takes a look at selected industries in Europe with lectures and company visits. The last week of the programme ends with a 2-day business game in marketing tactics.

### **3. Law Summer – The Law of the European Union**

The four-week long academic programme focuses on European Business Law, is taught entirely in English and follows ABA standards. After a one-week intensive course on the Law of the European Union students may choose from at least 6 different electives dealing with more detailed questions of EU Business Law, e.g. EU Competition and Antitrust Law, EU Financial Regulation, EU Climate Protection and Emission Trading; Transnational Arbitration, EU Banking and Securities Law; EU Corporate and Company Law. Each elective equals 2 ECTS, comprises a site visit (e.g. European Central Bank, European Court of Justice) and a final examination on the last two days of the Summer Programme.

In addition to the academic curriculum we provide a free-of-charge crash course in German during week one of the programme. Social, cultural and sightseeing activities (UNESCO World Heritage Site – Upper Middle Rhine, Wiesbaden and Frankfurt) complement the programme. After successful completion, a certificate stating the final grade, credits earned and the content of the programme will be issued.



For more information please contact  
**Ursula Haque** (Business Summer) or  
**Michelle Staniczenko** (Law Summer).

## Career Services Center

The Career Services Center (CSC) at EBS Business School is committed to:

- providing career-related services for students to realise their full potential on the job market
- fostering lasting relationships with corporate recruiting partners to provide customised recruiting strategies on campus and enable efficient access to EBS graduates.

For EBS students, we organize career events on campus, connect students to alumni who work in their target industry, run workshops to enhance your career skills and provide assistance with job applications and CVs. Here are just a few examples of the on-campus career events organized by the CSC each year:

### EBS Career Forum campus meets company

At this one-day career fair you have the opportunity to personally meet a number of prospective employers and talk to human resources professionals about your career plans.

### Company Presentations

At these exclusive evening events, you gain insight into the business of our corporate partners and discuss matters of interest related to the company presentation. The informal

get-together in the wine cellar at EBS following the presentation gives you the opportunity to network with our corporate partner and explore career opportunities.

### First-round interviews

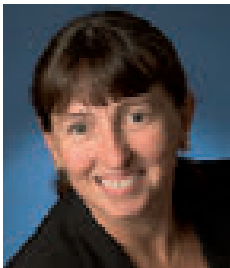
Corporate recruiting partners conveniently meet you for first-round job interviews on campus, saving you time to travel elsewhere.

### Workshops

You have the opportunity to participate in workshops organized by our corporate recruiting partners. In these workshops you solve case studies or work on solutions for key challenges facing the company. This is a great way for you to get to know the company and explore the industry.

### EBS Online Resume Book

Corporate partners have direct access to your profile in the EBS Online Resume Book allowing them to contact you directly for interesting positions. For an overview of current career events, please see: <https://www.myeps.de/eventplanner.220/overview/> For access to internship and job offers as well as career resources, please see the ecareer market on myEBS <https://www.myeps.de/job-market.99/>.



*Dagmar Spreitzer  
Career Services Center  
Phone +49 611 7102 1680  
dagmar.spreitzer@eps.edu*



*Nina Noormann-Becht  
Career Services Advisor  
Phone +49 611 7102 1685  
nina.noormannbecht@eps.edu*

- First point of contact
- CV and cover letter check (German)
- Contact service to alumni
- Organization of career events

- Individual career counselling
- CV and cover letter check (English)
- Trainer for career workshops

# Coaching

## The EBS Coaching Programme

Coaching@EBS is a personal development opportunity that is unique in the German higher education landscape: We offer all students and doctoral candidates the chance to take part in one-to-one coaching sessions with their own personal coach. Our coaches are experienced managers and human resource directors from the top 500 companies in Germany who have passed an executive training at EBS to become a coach. EBS coaches come from a broad sector of industries including finance, marketing, and education.



Marie-Luise Retzmann  
Director Coaching  
Phone +49 611 7102 1664  
marie-luise.retzmann@ebs.edu



Swantje Daniel  
Programme Coordinator  
Coaching  
Phone +49 611 7102 1663  
swantje.daniel@ebs.edu

## Our notion of coaching

Coaching is a confidential and professional one-to-one session between a coach and a coachee (student/doctoral candidate). The coach supports and encourages the coachee to identify what he/she is really aiming for, to seek solutions and make the right decisions.

## Typical questions asked by students/doctoral candidates in coaching sessions

- *How can I deal with the changes I will face when starting my studies or doctoral studies?*
- *How can I cope with stress and performance requirements?*
- *What are my strengths and weaknesses, and how can I deal with them?*
- *Which is the right career path for me?*
- *How do I deal with conflicts – e. g. when working with fellow students or with lecturers?*

## Your benefits

### Coaching encourages you to:

- open up new perspectives and develop new options for action
- improve self-organization and time management
- identify your aims and develop strategies to achieve your goals
- develop a realistic assessment of career paths that might be open to you.

## We offer

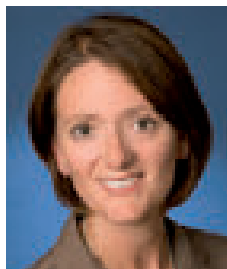
- up to four one-to-one coaching sessions per semester, each lasting 60 - 90 minutes
- a pool of coaches for you to choose from
- personal guidance concerning coaching, choice of coach or when changing your coach.



For more information:  
[www.ebs.edu/coachingatebs](http://www.ebs.edu/coachingatebs)

## Language Institute

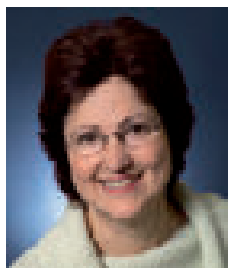
The EBS Language Institute (ELI) is responsible for all foreign language instruction at EBS Universität. Within EBS Business School this encompasses all credited language courses of the Bachelor's, Master's and MBA programmes as well as electives and optional non-credited courses. In addition, the ELI runs intensive German courses for the international students and Chinese, English, French, Russian and Spanish preparation courses prior to the semester. Within EBS Law School, all language requirements are also the remit of the ELI.



*Gillian Wartewig  
Office Manager  
Phone +49 611 7102 1283  
gillian.wartewig@ebs.edu*



*David Windsor  
Director  
Phone +49 611 7102 1774  
david.windsor@ebs.edu*



*Mercedes Sponholz  
Head of Optional Languages  
and Head of Spanish  
Phone +49 611 7102 1770  
mercedes.sponholz@ebs.de*



*Peter Cole  
Associate Director and Head  
of English  
Phone +49 611 7102 1735  
peter.cole@ebs.edu*

**Lecturers**

Arabic:	Abdesslem Aboub
Chinese:	Hong Gao Yabo Zhu
English:	Peter Cole Jessica Hagen Alexandra Persiko Robert Persiko
French:	Abdesslem Aboub Daniel Hubert Bertrand Reisner-Sénelar
German:	Régis Guézodjè Agi Meisl-Faust Faranak Mensch Marion Scherer Gabriele Seib-Hellemeier
Italian:	Dr Cristina Boscolo
Japanese:	Setsuko Mochida
Portuguese:	Ana Paula Correia
Russian:	Dr Meri Zacher
Spanish:	José Luis Angulo-Martínez Marta Borrás Garcés Dr Cristina Casallas Moreno Cristina Parra Dr Remi Solano-Rodríguez Silvia Soto de Kamann

## Academic Services

Academic Services assists all students during their entire course of study at EBS and comprises the following:

- Service Point
- Students Office
- Examinations Office
- Housing
- International Programmes
- Resource & Schedule Management
- Library
- Doctoral Programme



*Dr Gerda Niemann  
Associate Dean  
Academic Services  
Phone +49 611 7102 1579  
gerda.niemann@ebs.edu*

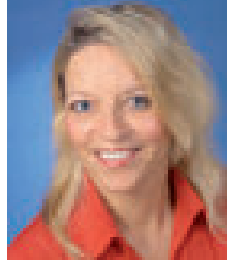
### Resource & Schedule Management

The Resource & Schedule Management (RSM) team draws up timetables for the different degree programmes at EBS and organizes course selection for EBS students and international guest students. If you have any questions concerning time schedules and course selection, please contact us.

Additionally, the team manages lecture room allocation in Wiesbaden and Oestrich-Winkel. You may contact [raumreservierung@ebs.edu](mailto:raumreservierung@ebs.edu) to reserve rooms for events, workshops, student initiative meetings, etc.



*Business School  
Bachelor's programmes  
sem. 5 + 6  
Law School Programmes  
Bettina Gehrman  
Director Resource &  
Schedule Management  
Phone +49 611 7102 1741  
bettina.gehrmann@ebs.edu*



*Business School  
Bachelor's programmes  
sem. 1 - 4  
Cornelia Brückner  
Manager Resource &  
Schedule Management  
Phone +49 611 7102 1732  
cornelia.brueckner@ebs.edu*



*Business School Master's  
programmes & EBS Full-time  
MBA  
Barbara Sommer  
Manager Resource &  
Schedule Management  
Phone +49 67 611 7102 1636  
barbara.sommer@ebs.edu*



*Course selection  
Ute Michler  
Manager Resource &  
Schedule Management  
Phone +49 611 7102 1757  
ute.michler@ebs.edu*



*Law School  
Kathrin Casaroli  
Manager Resource &  
Schedule Management  
Phone +49 611 7102 1587  
kathrin.casaroli@ebs.edu*



## Students Office

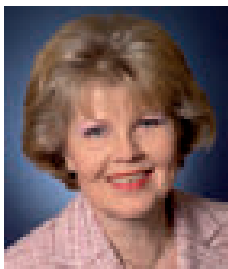
Providing assistance to full-time and part-time students as well as international guest students during their entire study period at EBS Universität, the Students Office

- carries out the entire enrolment process for all study programmes at EBS Universität entailing the collection of all the relevant enrolment documents
- provides all the documents necessary for student registration at EBS Universität
- prepares the student ID cards (in co-operation with IT Services) and orders new student ID cards should the original ID card go missing
- issues all invoices to EBS students (semester fees, enrolment fees, examination fees, fees for optional languages courses etc)
- supplies information about scholarships and student loans and helps with all BAFÖG related issues
- certifies copies of EBS certificates
- informs students about compulsory health insurance requirements whilst studying at EBS Universität
- is responsible for restoring access to Web.Campus
- handles the exmatriculation process and temporary leaves of absence and provides students with all necessary documentation.

Students are required to keep the Students Office up-to-date concerning their personal contact details.



*Daniela Frey*  
*Head of Students Office*  
*Phone +49 611 7102 1570*  
*daniela.frey@ebs.edu*



*Margit Faust*  
*Student Administration*  
*Phone +49 611 7102 1567*  
*margit.faust@ebs.edu*

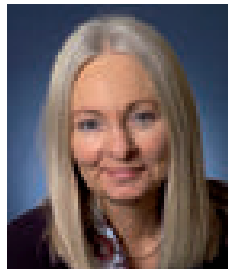


*Selma Hünce*  
*Student Administration*  
*Phone +49 611 7102 1585*  
*selma.huence@ebs.edu*

## Examinations Office



*Dr Gerda Niemann  
Associate Dean  
Academic Services  
Phone +49 611 7102 1579  
gerda.niemann@ebs.edu*



*Ellen Schleifer  
Examination Manager  
Phone +49 611 7102 1582  
ellen.schleifer@ebs.edu*

The Examinations Office is responsible for the administration of all examinations at EBS.

In detail staff

- issue semester reports, degree and ranking certificates
- schedule all examinations
- schedule defences in the Bachelor's programmes
- issue Dos and Don'ts for exams
- manage the "Drop Box" for academic papers
- administer official medical certificates for exams and research assignments
- check placement records and exam results for courses taken abroad and at other universities
- coordinate Learning Agreements
- coordinate examination reviews.



*Martin Vieler  
Examination Manager  
Phone +49 611 7102 1586  
martin.vieler@ebs.edu*

*Judita Bock  
Examination Manager  
Phone +49 611 7102 1577  
judita.bock@ebs.edu*



*Frank Tumele  
Team Leader  
Examinations Office  
Phone +49 611 7102 1515  
frank.tumele@ebs.edu*



*Sandra Thullen-Thiel  
Examination Manager  
Law School  
Phone +49 611 7102 1517  
sandra.thullen-thiel@ebs.edu*

## International Programmes Office (IPO)

The International Programmes Office manages all international relations at EBS and is the prime contact for all questions related to international student and staff exchange. The work scope of the IPO comprises three main areas:

### International Relations

- Management of all exchange activities with over 200 excellent partner universities on six continents
- Administration of exchange agreements
- Hosting of international visitors
- Monitoring and balance of exchange capacities
- Development and provision of information material for incoming students and partner schools.

### Outgoing Student Exchange

- Information sessions on exchange semester
- International events and fairs
- Counselling of students in areas such as partner universities and countries, course selection and credit transfer, application formalities, visa matters, etc.
- Administration of exchange place allocation processes
- Assistance for students during the entire application period and during the exchange
- If required, troubleshooting during and after the exchange semester.

### Incoming Student Exchange

- Administration of incoming exchange applications
- Assistance in visa matters
- Scholarship administration

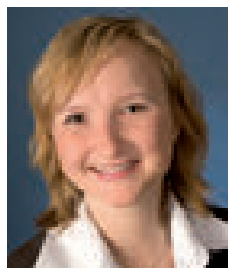
- Information and assistance during the entire application and course selection process
- Academic, social and cultural integration of international students into life at EBS
- If necessary, trouble shooting and negotiation between EBS institutions and partner schools.



*Daniela Herz-Gossler  
Team Lead International  
Programmes  
Non-European Graduate  
Dual Degree  
Phone +49 611 7102 1573  
daniela.herz-gossler@  
ebs.edu*



*Philippe Chatillon  
International Programmes  
Coordinator  
Latin-America, Western and  
Southern Europe, UK, Ireland,  
Erasmus  
Phone +49 611 7102 1565  
philippe.chatillon@ebs.edu*



*Alexandra Dierking  
International Programmes  
Coordinator  
USA, Canada, Australia,  
New Zealand, Eastern  
Europe  
Phone +49 611 7102 1575  
alexandra.dierking@ebs.edu*



*Anne-Katrin Kriesch*  
*International Programmes*  
*Coordinator*  
*Asia, Africa, Scandinavia*  
*Phone +49 611 7102 1576*  
*anne-katrin.kriesch@ebs.edu*



*Ina Schnakenberg*  
*International Programmes*  
*Coordinator, Visa Support*  
*Phone +49 611 7102 1516*  
*ina.schnakenberg@ebs.edu*



*Sina Thonipara*  
*International Programmes*  
*Coordinator Law School*  
*Phone +49 611 7102 1568*  
*sina.thonipara@ebs.edu*

## Service Point

The Service Point offers students at EBS a one-stop point of contact to deal with most of the issues and concerns relating to university life without long waits. Do you need to obtain your transcripts, submit essays, pay your rent or receive your scholarship payments? Or perhaps you are looking for help regarding certain student services? Staff at the Service Point will be able to answer your questions quickly and competently.



*Stefan Schmidt*  
*Service Point Business*  
*Phone +49 611 7102 1583*  
*servicepoint@ebs.edu*

## EBS Events

Alongside numerous academic events, EBS also regularly organizes and holds a wide range of cultural and social events. This diverse and vibrant event culture as well as the ongoing dialogue with representatives from industry and society would be hard to imagine without the commitment and creativeness of our students who are entirely responsible for designing and organizing many of these events.



### EBS Symposium

Contact – Congress – Career. These are the three pillars of the EBS Symposium organized exclusively by EBS students. The topic of this year's EBS Symposium, which takes place on EBS Business School campus from 18 – 20 September, is "Global Arbitrage – Evaluating Opportunities and Risks ". The 24th EBS Symposium is especially dedicated to this year's partner country, Singapore.



Further information:  
[www.ebs-symposium.de](http://www.ebs-symposium.de)

### EBS Career Forum

Campus meets company. A wide variety of companies present themselves and their fields of business to EBS students. At this one-day career fair students have the opportunity to personally meet a number of prospective employers and talk to human resources professionals about their career plans. The career forum is also the perfect opportunity to learn about internships and thesis cooperation possibilities.



### EBSpreneurship

Organized by the student-led organization EBSpreneurship, the EBSpreneurship Congress aims to bring together interested students, business founders and investors to create an innovative communication platform.

In addition to presentations given by high-profile representatives from the business start-up community, a panel discussion and workshops deal with issues relating to setting up a business. Guests and investors also have the opportunity to hold short presentations followed by discussions where they are able to share their experiences and views and make valuable contacts.

The topic of this year's EBSpreneurship Forum, which takes place on EBS Business School campus from 24 – 25 October, is "Turning Challenges into Results".



Further information:  
[www.ebspreneurship.de](http://www.ebspreneurship.de)

### EBS Supply Chain Conference

The 9th Supply Chain Conference will take place from 20 to 21 March 2014 on our beautiful campus in Oestrich-Winkel. The SCC is a congress for students who are interested in the field of supply chain management, including logistics and procurement. In a fast and global world of next-day delivery, supply chain management is becoming increasingly important. Workshops, inspiring speeches, supply chain simulations, recruiting and the well-known get-together will round up next year's conference and once again create a great networking platform for companies and students.

## EBS Open Day

On Open Day, EBS presents itself at its attractive campus locations in the Rheingau and Wiesbaden. In presentations, campus tours and one-to-one talks with staff and faculty, prospective students and their parents are able to find out more about course contents, the admissions process, study abroad, student financing possibilities, and internships. Detailed information is also provided on EBS wide range of executive education programmes.

To round off the day, all guests are invited to a party in the evening organized by our student initiative EBSevent.

## eXebs Practitioners Day

The “eXebs Praxistag” (Practitioners Day) takes place each autumn on EBS Schloss Reichartshausen campus in Oestrich-Winkel. Organized for EBS students and their parents, the event is free of charge. EBS alumni from a wide range of industry sectors report on how they gained their current position and describe their daily working life. They are also ready to answer any questions from students and parents relating to their career and jobs. Most companies find this event particularly useful for internship recruiting purposes.

The following professional areas are typically represented during eXebs Practitioners Day:

- Banking
- Financial Control
- Marketing
- PR & Merchandise
- Start-ups
- Management Consulting
- Investment Banking
- Industries / Supply Chain Management
- Private Equity / Venture Capital
- Starting up abroad



## EBS Real Estate Congress

The EBS Real Estate Congress is hosted annually by the student initiative EBS Real Estate and the EBS Real Estate Management Institute (REMI). The one-day international conference on EBS Business School campus in Oestrich-Winkel aims to critically discuss new mega trends in the property sector. Since 2008, the conference also hosts the largest German recruiting event in real estate where students have the opportunity to gain information about different companies and the chance to meet industry professionals. A highlight of each year’s congress is the Aareal Award of Excellence in Real Estate Research. Worth 12,000 euros, this prize is presented by the EBS Real Estate Management Institute (REMI) and the Aareal Bank AG to honour academically outstanding work in real estate research.



Further information:

[www.ebs-immobilienkongress.de](http://www.ebs-immobilienkongress.de)

## Frühlingsfest

Since 2007, EBS students have organized the *Frühlingsfest* (former Rheingau Day) that takes place once a year. In a relaxed atmosphere, Rheingau residents have the opportunity to get to know EBS and its students. The varied programme includes not only campus tours and presentations by the student organizations and initiatives, but also discussion forums on current topics from the region, an extensive children’s programme complete with bouncy castle and giant slide, as well as an exhibition of paintings from a painting competition held in local kindergartens.



Christian Fongern,  
Vice President,  
Managing Director  
Booz & Company GmbH

#### *“Win-win partnership: Booz & Company and EBS*

*Directly after gaining my “Abitur” (German university entrance qualification), I visited a trial lecture in business studies at a public university. Shortly afterwards, EBS held its Open Day. Deciding between crowded lecture rooms and a desk in Schloss Reichartshausen was not really difficult at all.*

*Although I might have been following my gut feeling when I decided to go for EBS, I have never regretted my decision. Looking back, I clearly see the advantages EBS offered. The opportunity in addition to semesters spent at EBS to spend semesters abroad at two different partner universities and get to know country and people was a huge benefit. Although I have no basis for comparing studies at EBS with studies at a public university, due to the strict admissions process fellow students were perhaps above-average and ambitious. In those days, typical classes at EBS had around 100 students and everyone knew each other. Even today, there is close contact and a vibrant exchange among EBS graduates.*

*In my 7th and 8th semester I attended company presentations at EBS held by a number of prospective employers, among them Booz & Company, the company I work for today. Degree programmes such as EBS offered featuring an international curriculum were rare in Germany in those days. Today, I am convinced that my interesting CV set me apart from hundreds of other job applicants in the competition for good jobs.*

*Representing Booz & Company, I’ve been regularly returning to EBS for several years to attract EBS graduates to the field of strategy consulting. For Booz & Company EBS is one of the most important recruitment channels in Germany. To date, we have recruited more than 30 EBS graduates, including Partners Stefan Eikemann and Jörg Krings. EBS has retained its attractiveness over the years and many students are interested in a management consulting career. They bring with them an excellent education, motivation, team and communication skills – the competences needed for an international consulting career. This is why Booz & Company enjoys a close relationship with EBS and with the Dean of EBS Business School, Professor Rolf Tilmes, a former Booz consultant.*

*A win-win partnership for all involved that has lasted for years.“*





inspire

**EBS Business School**

2

## Welcome to EBS Business School



*Professor Dr Richard Raatzsch  
Dean of EBS Business School*

*Dear Students*

*Welcome to EBS, welcome to the Rheingau,  
welcome to Wiesbaden!*

*When you were faced with deciding where you would like to study, which universities you were going to apply to and which university you would like to graduate from, in some form or other you came across EBS Universität.*

*We are delighted that our USPs: Network, Internationality, Responsibility, and Excellence, together with our Vision and Mission helped you to make your decision. Today, you can take us at our word and make us rise to the challenge. Today, you can experience all this for yourselves.*

*How can you personally experience  
“Internationality” at EBS?*

*Internationality at EBS means that in daily teaching practice lectures are held in English. For most of you English is not your native language. This may lead to some confusion or misunderstanding because the common language being English does not necessarily mean that we all have the same understanding of what is meant. Over the coming months you will be able to develop your intercultural competence through “learning by doing”. You will also experience internationality in class. Most of our faculty come from an international background. They have either joined EBS from abroad or they have spent longer periods teaching or conducting research at universities abroad. You will benefit from their international experience every day in lectures and seminars – so be alert and attentive. And internationality also means that we are able to welcome more and more international students to EBS. These students come to Germany to experience, among others, internationality. You too will experience internationality in your stay abroad lasting one, two or three semesters, depending on your chosen programme. The majority of you have had a similar experience whilst at school or in your previous studies, however during your stay abroad you will see that EBS has prepared you well for new experiences and the path you will pursue. If this is not the case, then please tell us. If this is the case, then please tell others.*

*How can you personally experience  
“Responsibility” at EBS?*

*First of all, over the next few years you are responsible each day for yourself and your success at EBS. However, “Responsibility” also means*

that we expect you to take on responsibility for your fellow students and your University. Your fellow students rely on you, we rely on you, you now represent EBS. It is our responsibility to support you, to show you how to take on more responsibility in society – a worthwhile experience – through personal development projects or Educare projects. It is our responsibility to be there for you when you need help and assistance, whether from our coaches, our faculty or our administrative staff. If we fail in our responsibility, please tell us. If we meet our responsibility, then follow our example.

*How can you personally experience “Network” at EBS?*

Our corporate partners – from multinationals to hidden champions – are one of our University’s major assets. You will benefit from the cooperation between EBS and these organizations in your daily studies, which are characterized by links to business practice that are crucial today: guest lectures as part of the curriculum and at extracurricular events, the involvement of practitioners in teaching, events such as the EBS Symposium, the Real Estate Congress or the Supply Chain Conference. We benefit from the networks established by our alumni and the contacts they pass on to EBS and on to you. You become part of a close-knit network that will reach far into your future working life. Speak with our graduates and participate in a fantastic network.

*How can you personally experience “Excellence” at EBS?*

This will most certainly be reflected in your performance and your final results. So that you are able to set yourself apart from the competition

for the best jobs, we need to ensure an environment conducive to learning and working. This includes a curriculum that will prepare you for your future career, both academically and practically. We continuously review and update our programmes to ensure they reflect the latest content. Our activities and support for you outside coursework are also designed to give you the best possible start after leaving EBS. In this environment we are committed to our core values “Network”, “Internationality” and “Responsibility” by delivering excellent work. Challenge us. If we fail to fulfil our commitment, please tell us. If we do fulfil our commitment, then give proof of the fact at the latest in 12, 18 or 36 months in your job and starting tomorrow in society.

As a student at EBS you are a member of the EBS Family. This is not just an empty phrase but has been reality since 1971. During the admissions process you were already one of us and we were impressed by you. We made an effort for you. If this was not the case, please tell us. But if you share our view, then spread the word. Tell your friends. Tell our staff if they took good care of you during the admissions process.

Experience in student initiatives how projects are successful because of personal commitment and dedication. Experience among like-minded people how a community develops through discussions, trust and performance. An exciting time lies ahead of you, at EBS, in the Rheingau and in Wiesbaden – make the most of it!



## Departments at EBS Business School

### Theory meets Practice

To ensure that studies at EBS Business School are both academically challenging and practically relevant, EBS lecturers and instructors are a well-balanced mix of professors and experienced practitioners from the business environment. EBS academic staff, which includes not only EBS professors but also visiting and adjunct professors from around the world, combine contemporary teaching in their particular areas of specialization with high practical relevance. Research findings generated by the numerous projects conducted at EBS Chairs and Departments underpin the state-of-the art curriculum. In lectures and case studies corporate representatives from EBS wide-reaching network of leading business organizations share their experiences with students and deliver first-hand information on current challenges and problems in today's economy.

	<b>Strategy, Organization &amp; Leadership</b>	<b>Marketing</b>
<b>Head of Department</b>		
	<b>Grimm</b>	<b>Falk</b>
<b>Academic Manager</b>		
	<b>Spors</b>	<b>Feuerbach</b>

Finance,  
Accounting &  
Real Estate



Dechow

Supply Chain  
Management &  
Information Systems



Smolnik

Innovation  
Management &  
Entrepreneurship



Gleich

Governance &  
Economics



Kragl

N.N.



Werz



Halstrick

N. N.

## Department of Strategy, Organization and Leadership (located in the Schloss)

The Department of Strategy, Organization and Leadership at EBS Business School comprises the following areas: Strategy, Organizational Theory & Behaviour, Governance, HRM, Social Innovation, Social Business, Strategic Innovation and Transformation, Sports, Business and Society, Services Management, International Management, Political and Moral Philosophy and the Philosophy of Science.

We offer students a high quality programme with superior academic content. Students learn to co-produce knowledge and further their personal development – an “experience” to last a lifetime. We are actively involved in the international academic community and conduct rigorous yet relevant research published in top-tier journals. In executive education we offer a wide portfolio of courses through cooperation with firms, field studies, case studies and applied research.

### Programmes & Courses

The SOL Department offers a broad spectrum of studies in the Bachelor's, Master's and Doctoral Studies programmes as well as in executive education. The Department has a leading responsibility in the BSc and MSc programmes in Management, as well as in the Master in Business Administration (MBA) programme. It is also responsible for the Studium Universale at EBS Business School and EBS Law School.

Courses are not only offered as classic lectures and seminars, but there is also a strong focus on innovative and participatory teaching methods with case-study teaching, workshops and field studies. Practitioners and partner organizations are often involved in the courses

providing students with a practical understanding of the issues they study in theory.

The SOL Department teaches in the following programmes:

### Bachelor (BSc) in General Management and Bachelor (BSc) in Aviation Management

- Core courses in Management, Organizational Behaviour, Managing Strategy and Managing People
- Specialization “Strategy Consulting”
- Studium Universale
- Service Learning and Personal Mastery

### Master (MSc) in Management

- Specializations “Consulting Field Study”, “Governance and Organizations”, “Managing People and Organizations” and “Social Business”
- Studium Fundamentale
- Service Learning
- Sustainability along Global Value Chains

### Full-time MBA and Executive MBA

- Leadership
- Managing in Turbulent Times
- Innovation and Entrepreneurship
- International Management
- Strategy & Structure
- Managerial Effectiveness
- Managing in a Globalized World

### Master in Business Innovation (MBI)

- Leadership Perspectives
- Global Perspectives
- Legal and Financial Perspectives
- Fundamentals of Innovation
- Venture Capital

### Law School

- Collegium Ethicum
- Collegium Logicum

### MBA Summer School

### BSc and MSc Summer School

### Doctoral Studies programme

- Academic Writing and Publishing
- Philosophy of Science
- Laboratory, Natural and Field Experiments
- Qualitative Research Methods for Doctoral Students

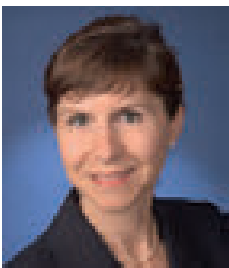
### Members in the Department



*Professor Dr Ulrich Grimm  
Head of Department  
Professor of Strategic  
Management  
Phone +49 611 7102 1825  
ulrich.grimm@ebs.edu*

#### Research Fields:

- Systemic Approach to Strategic Corporate Governance
- Systems Theory
- Constructivism and Strategy



*Bärbel Spors  
Academic Manager  
Phone +49 611 7102 1432  
baerbel.spors@ebs.edu*



*Professor Dr  
Richard Raatzsch  
Dean of EBS Business School  
Professor of Practical  
Philosophy  
Phone +49 611 7102 1427  
richard.raatzsch@ebs.edu*

#### Research Fields:

- Wittgenstein Commentary
- Reflective Intuitionism
- Knowing and Condemning
- Seeing what is Good
- Business Ethics  
("The Honourable Businessman")



*Professor Dr Sascha Schmidt  
Professor of Sports,  
Business and Society  
Director of the Institute for  
Sports, Business and Society  
sascha.schmidt@ebs.edu*

#### Research Fields:

- Social and Economic Impact of Sports
- Sports Economics
- Corporate Strategy
- Human Capital and Sports
- Innovation in Sports



*Professor Dr Max Urchs  
Professor of Philosophy of  
Science  
Director of the Institute for  
Business Ethics (IfU)  
Phone +49 611 7102 1436  
max.urchs@ebs.edu*

**Research Fields:**

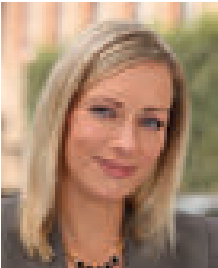
- Book project:  
“Philosophy. An Introduction for Business Students” (with Stanislaw Flejterski, in print)
- Logic and the Philosophy of Science
- Cognitive Science (decision-making)
- Complexity Theory



*Professor Amit Karna, PhD  
Assistant Professor of  
Services Management  
Phone +49 611 7102 1421  
amit.karna@ebs.edu*

**Research Fields:**

- Capability Development within Organizations
- Knowledge, Innovation and Social Networks
- Emerging Market Multinationals
- Industrial Clusters
- Business Model Innovation



*Professor Marjo-Riitta  
Diehl, PhD  
Assistant Professor of  
Organizational Behaviour  
Phone +49 611 7102 1426  
marjo-riitta.diehl@ebs.edu*

**Research Fields:**

- Social Exchange Theory (Psychological Contract), Organizational Justice, Social Capital
- Layoffs and their Consequences for Organizational Behaviour
- Promotion of Innovativeness and Innovation



*Professor Dr Karin Kreutzer  
Assistant Professor  
Danone Endowed Chair of  
Social Business  
Phone +49 611 7102 1412  
karin.kreutzer@ebs.edu*

**Research Fields:**

- Social Business and Social Entrepreneurship
- Management of Civil Society Organizations
- Organizational Identity
- Hybrid and Pluralistic Organizations
- Professionalization
- Volunteering





*Professor Dr  
Christian Landau  
Assistant Professor of  
Competitive Strategy  
Phone +49 611 7102 1490  
christian.landau@ebs.edu*

**Research Fields:**

- Diversification Strategy and the Role of the Corporate Headquarters
- Internationalisation Strategies for Emerging Markets
- Competitive Strategies in High-Tech and High-Velocity Industries
- Value Creation by Private Equity Firms
- Open Innovation



*Dr phil. Marcus Kreikebaum  
Postdoc  
Phone +49 611 7102 1424  
marcus.kreikebaum@  
ebs.edu*

**Research Fields:**

- Aesthetics and Economics
- CSR Standardization
- Integrity and Compliance Management
- Philanthropy
- Service Learning



*Professor Dr Julia Wolf  
Assistant Professor of  
Sustainability in Logistics  
& Supply Chain  
Management  
Phone +49 611 7102 2188  
julia.wolf@ebs.edu*

**Research Fields:**

- Sustainability Management
- The impact of external and internal stakeholder groups on sustainability in organizations and their supply chains
- Strategies to implement sustainability within organizations and their performance impact
- Resource-Dependence Theory, Stakeholder Theory
- Environmental Operations & Supply Chain Management
- Sustainability in Logistics
- Natural Resource-Based View of the Firm



*Professor Dr  
Andreas Heinecke  
Honorary Professor and  
Director Research Social  
Business  
Phone +49 611 7102 1429  
andreas.heinecke@ebs.edu*

**Project focus:**

- Project "Erfahrungsunternehmer"
- Leadership Project



*Professor Dr Peter Russo  
Visiting Professor  
Director Institute for  
Transformation in Business  
and Society  
Phone +49 611 7102 1455  
peter.russo@ebs.edu*

#### Research Fields:

- Transformation in Service and Technology driven Industries
- Governance Mechanisms in Partnerships between Profit and Non-profit Organizations
- Entrepreneurial Orientation in the Context of Corporate Social Entrepreneurship

#### Adjunct Professors

##### **Professor Klaus Uhlenbruck, PhD**

University of Montana, USA  
Adjunct Professor of International Strategy

##### **Professor Dr Benno Torgler**

Queensland University of Technology,  
Australia

Adjunct Professor of Sports,  
Business and Society

##### **Professor Dr Sven Voelpel**

Jacobs University Bremen, Germany  
Adjunct Professor of Strategy, Leadership  
and Innovation

## Department of Marketing (located in the Schloss/AIM in the Burg)

The famous management guru Peter F. Drucker claimed that finding a customer, and not making money, is the essential objective of a company. A customer's willingness to pay for a product or a service "converts economic resources into prosperity". Companies should therefore perform two central functions: marketing and innovation.

Marketing is a key element in aligning companies with their customer wishes and needs and linking these to its core strengths. The objective of corporate marketing is to understand and cater precisely and more effectively than the competition to customer needs in order to become the customer's preferred company and generate a greater willingness to pay.

The Marketing Department considers itself an inspiring force within the marketing community – in research, education and executive education. We are the right address for those interested in innovative strategies and the techniques, instruments and methods used to design effective marketing strategies.

Backed by a solid theoretical foundation we maintain an eye for practical relevance in order to provide innovative solutions for marketing challenges both today and in the future.

We aim to

- make marketing relevant and understandable
- set new standards in marketing
- break new ground
- take advantage of a large and varied team
- create value through networking.

We offer all interested parties – whether students, managers or other interested persons – a broad spectrum of research, education and

executive education activities. The Department includes four senior professors, one extraordinary professor, one adjunct professor and two honorary professors with more than 30 employees working on different marketing topics.

### Modules/Courses in the Bachelor's (BSc) programme

- Business Field Strategies
- Market Research
- Market Communication
- Management of Brands and Services
- Channel Management of Consumer Brands
- Trade and Retail Marketing
- Retail Marketing
- Management of Customer Behaviour in Services
- Strategic Marketing in Aviation Management
- Business Field Strategies and Market Communication
- Introduction to Marketing with a focus on Airline Marketing
- Marketing Research

### Modules/Courses in the Master's (MSc) programmes

- Research Methods I & II
- Price & Product Management
- Strategic Marketing Field Study
- Brand Management & Consumer Behaviour
- Communication Management
- Sales Management & Interactive Marketing
- Strategic Marketing Business Game
- Services & Retail Marketing
- Advanced Marketing Mix Management
- Advanced Services Marketing
- Automotive Brand Management & Customer Behaviour
- Distribution Channels & Dealership Management

### BSc and MSc Summer Schools

### Members in the Department



*Professor Dr Tomas Falk  
Head of Department  
ConCardis Endowed Chair of  
Consumer Behaviour  
Phone +49 611 7102 1469  
thomas.falk@ebs.edu*

#### Research Fields:

- Acceptance of Self-Service Technologies
- Customer Satisfaction
- Services Quality



*Dr Mario Feuerbach  
Academic Manager  
Phone +49 611 7102 2075  
mario.feuerbach@ebs.edu*



*Professor Dr  
Franz-Rudolf Esch  
Chair of Brand Management  
and Automotive Marketing  
Phone +49 611 7102 2069  
franz-rudolf.esch@ebs.edu*

#### Research Fields:

- Brand Management
- Brand Alliances
- Brand Architecture
- Brand Portfolio
- Product and Brand Design
- Figure Communication

- Below-the-line Communication
- Corporate Social Responsibility
- Mental Convenience
- Neuro Marketing
- Digital Marketing
- Behavioural Branding
- Advertisement Efficiency



*Professor Dr  
Roland Mattmüller  
Chair of Strategic Marketing  
Phone +49 611 7102 1481  
roland.mattmueller@ebs.edu*

#### Research Fields:

- Process-oriented Marketing
- Integration-oriented Marketing
- Business Field Strategies
- Retail Marketing
- Ingredient Branding
- Brand Management
- Product Management
- Political Marketing



*Professor Dr  
Matthias Gouthier  
Chair of Services Marketing  
Phone +49 611 7102 1471  
matthias.gouthier@ebs.edu*

#### Research Fields:

- Service Excellence
- Customer Delight
- Employee Delight and Pride
- Customer Experience Management
- Service Productivity
- Services Science Product Management



*Professor Dr Ralph Tunder  
Chair of Health Care  
Management  
Managing Director of the  
Health Care Management  
Institute (HCMI)  
Phone +49 611 7102 1487  
ralph.tunder@ebs.edu*

#### Research Fields:

- Customer Integration
- Relationship Management

#### Adjunct Professor

##### **Professor Dr Alexander Pohl**

Adjunct Professor of Technology Marketing and Pricing

#### Honorary Professors

##### **Professor Dr Dr Alexander P. F. Ehlers**

Honorary Professor for Health Care Systems & Health Care Law

##### **Professor Dr Kjell Gruner**

Honorary Professor for Automotive Marketing, Pricing and Marketing

The Marketing Department is also closely linked to five Institutes/Centers:

- 1 Automotive Institute for Management (AIM) that deals with questions concerning mobility;
- 2 Health Care Management Institute that focuses on executive education;
- 3 Institut für Marken- und Kommunikationsforschung (IMK) that conducts research on current topics in brand management and communication;
- 4 Market Management Institute (MMI) that focuses on market-oriented management in research, education and executive education;
- 5 Center for Service Excellence (CSE).

## Department of Finance, Accounting & Real Estate (FARE)

(located in the Atrium House)

The three Institutes of Finance, Accounting and Real Estate are combined into one of the largest departments of its kind in Germany: EBS FARE Department. We offer our students a diversified and internationally oriented curriculum of the highest quality covering the core business fields of financing, accountancy and real estate management.

Excellent education is based on excellent research. Research in the FARE Department is extremely important, and we focus in particular on empirical methods that clearly relate to contemporary issues in banking and management practice. The three Department pillars “Finance”, “Accounting, Controlling, Taxation” and “Real Estate Management” enable us to closely link our research approaches, as for instance in the field of risk management.

We are committed to two missions: Excellent research in collaboration with national and international partners from the academic and corporate world and high quality study programmes catering to current business requirements. Best paper awards and A+ publications demonstrate that FARE research activities meet the highest academic standards. And the acknowledgment of our BSc programme by the Chartered Financial Analyst (CFA) Institute (application to the programme was master-minded and mainly driven by the FARE Department) is proof of FARE’s outstanding programme and teaching quality. With their BSc degree our students are well-prepared for the CFA Level I examination.

Furthermore, it is our responsibility to seek answers to the questions our cooperation partners around the world have to face in their daily business. To this end, we not only conduct research together with these partners, but also provide education for leading managers as part of “EBS Executive Education”. All Chairs and Institutes in the Department are closely involved in research, teaching and executive education activities.

### Programmes & Courses

The FARE Department offers a broad spectrum of courses in traditional Bachelor’s and Master’s programmes as well as in executive education. We aim to educate today’s students to become tomorrow’s qualified and responsible leaders.

In lectures and tutorials (e.g. case studies) students acquire the entire spectrum of skills required in financing, accounting and real estate management. Our cooperation partners from a wide range of national and international companies draw on their own hands-on experience to give students an understanding of business practice. The FARE Department holds lectures and tutorials in the following programmes:

#### Bachelor’s programme

- Bachelor (BSc) in General Management
- Bachelor (BSc) in Aviation Management

#### Master’s programme

- Master (MSc) in Finance
- Master (MSc) in Real Estate
- Master (MSc) in Management
- Master of Arts in Business for Legal Professionals (MA)
- Master of Arts in Wealth Management
- Master of Arts in Real Estate and Finance
- Executive Master of Arts in Real Estate

## MBA/EMBA programmes

### Doctoral Studies programme

Joint PhD programme with the universities of Frankfurt, Darmstadt and Mainz

## Members in the Department



*Professor  
Niels Dechow, PhD  
Head of Department  
Chair of Management  
Accounting & Controlling  
Phone +49 611 7102 1222  
niels.dechow@ebs.edu*

Niels Dechow joined EBS Business School in 2009 and was elected Head of the Finance, Accounting and Real Estate Department in July 2012. Previously, he has held academic positions at the University of Oxford (UK) and Case Western Reserve University (USA). He holds a PhD from Copenhagen Business School (DK). Prior to his academic career, he worked in Scandinavia as a consultant first with Deloitte & Touche Consulting and then with KPMG Consulting.

His academic work is published internationally in journals such as *Accounting, Organizations & Society*, *Management Accounting Research*, and the *Journal of Accounting and Organizational Change* as well as in peer-reviewed handbooks including for example the *Handbook of Management Accounting Research*, *Issues in Management Accounting* etc.

In his research Niels has previously explored the link between Enterprise Resource Planning Systems (ERP) and management control. Currently, he is investigating the practices of Enterprise Risk Management (ERM), the

conceptualization of performance management and the premises of value-based management in times of volatility. His approach to management accounting and control is driven by an interest in the behavioural effects and consequences of the ways that tools are implemented and used in practice. In his view a major challenge for management accounting is to moderate the alignment of corporate strategy, finances, organizational structure and human capital.

### Research Fields:

- Accounting in Enterprise Resource Planning (ERP) Systems
- Modern Management Concepts: Balanced Scorecard
- Accounting for Inter-organizational Relations (IOR)
- Future of Management Education & Research
- Enterprise Risk Management

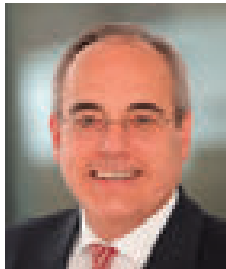


*Professor Dr Adrian Cloer  
Chair of Business Taxation &  
International Tax Law  
Phone +49 611 7102 1220  
adrian.cloer@ebs.edu*

Professor Dr Adrian Cloer studied law and political economics in Hannover and Frankfurt (Oder). He holds the Chair of Business Taxation and International Tax Law at EBS and is also honorary professor at the European University Viadrina in Frankfurt (Oder). Additionally, Adrian Cloer is employed with PricewaterhouseCoopers in Berlin, where he works as a barrister at law and a certified tax adviser in the field of real estate and asset management.

#### Research Fields:

- International Taxation
- International Tax Planning
- European Taxation
- Taxation of Real Estate
- Taxation of Investment Vehicles
- Taxation of REITs



*Professor Dr Rolf Tilmes  
Endowed Chair of Private  
Finance & Wealth Management  
Executive Director Private  
Finance Institute (PFI)  
Phone +49 611 7102 2010  
rolf.tilmes@ebs.edu*

Professor Dr Rolf Tilmes holds the Endowed Chair of Private Finance & Wealth Management at EBS Business School and has been Executive Director of the PFI Private Finance Institute since 2007. After obtaining a degree in business studies from EBS, he earned a Master of Management degree from the J.L. Kellogg Graduate School of Management at Northwestern University, Evanston, USA and a doctorate from EBS with a thesis on financial planning in private banking in 1999. In 2004, he became Professor at EBS.

#### Research Fields:

- Business Strategies and Customer Service Processes in Private Banking & Wealth Management
- Financial and Estate Planning
- Risk Management in Financial Planning
- Demographic Change and Financial Planning

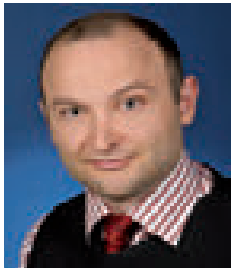


*Professor  
Ulrich Hommel, PhD  
Endowed Chair of Corporate  
Finance and Capital Markets  
Executive Director Strategic  
Finance Institute (SFI)  
Phone +49 611 7102 1241  
ulrich.hommel@ebs.edu*

Professor Ulrich Hommel holds a PhD in Economics from the University of Michigan. He gained his professorial qualification (habilitation) in business studies at the WHU, Germany, where he was Assistant Professor of Finance from 1994 to 1999. Ulrich Hommel has previously held visiting appointments at the Stephen M. Ross School of Business (University of Michigan), the Krannert School of Management (Purdue University) and Bordeaux Business School. He is also Managing Director of Quality Services at the European Foundation for Management Development (EFMD) in Brussels.

#### Research Fields:

- Real Options
- Venture Capital Financing
- Financing Family Enterprises
- Corporate Governance
- Business Portfolio Management
- Corporate Restructuring



*Professor  
Rasa Karapandza, PhD  
Assistant Professor of  
Finance  
Phone +49 611 7102 1244  
rasa.karapandza@ebs.edu*

Professor Rasa Karapandza holds a PhD in Economics and Finance from the University Pompeu Fabra, Barcelona. During his PhD studies he was a visiting scholar at HAAS School of Business at the University of California, Berkeley, and in the Economics Department at New York University.

#### Research Fields:

- Asset Pricing
- Real Estate Finance
- Applied Game Theory
- Computational Finance



*Professor Dr  
Ferdinand Mager, CFA  
Endowed Chair of Banking  
& Finance  
Phone +49 611 7102 1256  
ferdinand.mager@ebs.edu*

Professor Dr Ferdinand Mager holds a doctorate from the University of Erlangen-Nürnberg, Germany where he also received his professorial qualification (habilitation). Before joining EBS he held the position of Associate Professor at Queensland University of Technology in Brisbane, Australia. He also gained work experience at Deutsche Bank in New York, the First National Bank in South Africa and in various consulting projects.

#### Research Fields:

- Occupational Pension Schemes
- Mergers & Acquisitions
- Asset Management
- Credit Risk
- Market Microstructure



*Mrdjan Mladjan, PhD  
Research Fellow in Finance  
Phone +49 611 7102 1225  
mrdjan.mladjan@ebs.edu*

Mrdjan Mladjan supports the FARE team with teaching and researching in Financial Economics. Prior to joining EBS, he spent six years in Barcelona, Spain completing a PhD in Economics at the Universitat Pompeu Fabra. During his PhD studies he spent a semester as a visiting scholar at the UCLA Anderson School of Management. His previous education includes MSc studies in Quantitative Finance at the University of Belgrade and a BSc in Economics from the Massachusetts Institute of Technology.

#### Research Fields:

- Financial Economics
- Macroeconomics and Macro Finance
- Banking
- Economic History and Economic Growth





*Professor Dr Jan Mutl  
Research Fellow of  
Real Estate Economics  
Phone +49 611 7102 1253  
jan.mutl@ebs.edu*

Dr Jan Mutl holds a doctorate in Economics from the University of Maryland. He studied mathematics (BSc) at Masaryk University in Brno, Czech Republic, and economics (MSc) at the European University/University of Essex. Jan Mutl has several years of teaching experience (Goethe University Frankfurt, Université d'Orléans, IHS Vienna, University of Maryland). He has received the following scholarships:

- Open Society Fund Scholarship, 1997-2001, University of Maryland
- ACE/Phare Grant, May 1997, visiting scholar at Università di Siena, Italy
- Soros Foundation Scholarship, 1995-1997, University of Essex and the CEU

Research Fields:

- Empirical Real Estate Research
- Regional Economics – Studying the different regional markets
- Methodological Contributions



*Professor Dr Nico Rottke  
Aareal Endowed Chair of  
Real Estate Investment and  
Finance  
Executive Director Real  
Estate Management Institute  
(REMI)  
Phone +49 611 7102 1270  
nico.rottke@ebs.edu*

Professor Dr Nico Rottke holds the Aareal Endowed Chair of Real Estate Investment & Finance at EBS Business School. He also is founder and Executive Director of the Real Estate Management Institute (REMI) at EBS Business School. Nico Rottke has a Master of Science in Real Estate from Georgia State University, Atlanta, and a degree in business studies from EBS where he also obtained his doctorate and professorial qualification (habilitation). Since June 2010, Nico Rottke has been Adjunct Professor at the University of Central Florida (UCF), USA.

Research Fields:

- Real Estate Finance (Private Equity, Capital Markets)
- Real Estate Investment (Investment Vehicles)
- Real Estate Risk Management
- Real Estate Sustainability



*Professor Sandra Paterlini,  
PhD  
Chair of Financial Econometrics  
and Asset Management  
Phone +49 611 7102 1227  
sandra.paterlini@ebs.edu*

Sandra Paterlini holds the Chair of Financial Econometrics and Asset Management at EBS Business School. She has a PhD from the University of Bergamo, Italy, and an MSc in Financial Mathematics from the University of Warwick, UK. Before joining EBS, Sandra Paterlini was Assistant Professor at the University of Modena and Reggio E., Italy. Additionally, she has been Visiting Professor at the School of Mathematics, University of Minnesota, USA, at the Ludwig-Maximilians-University Munich, and at the University of Aarhus in Denmark.

Research Fields:

- Financial Portfolio Selection and Optimization
- Risk Management
- Financial Econometrics

### Adjunct Professors

**Professor Randy Anderson**

University of Central Florida,  
Orlando Florida, USA

Adjunct Professor of Real Estate Capital  
Markets

**Professor Ben Craig, PhD**

Federal Reserve Bank of Cleveland,  
Cleveland Ohio, USA

Adjunct Professor of Financial Institutions

**Professor Dr Michael Massmann**

Vrije Universiteit Amsterdam, The Netherlands  
Adjunct Professor of Econometrics

**Professor Dr Joachim Zietz**

Middle Tennessee State University,  
Murfreesboro Tennessee, USA

Adjunct Professor of Real Estate Econometrics

### Honorary Professors

Professor Dr Dres. h.c. Adolf G. Coenenberg

Professor Dr Renate Dendorfer

Professor Dr Andreas R. Dombret

Professor Dr Wolfgang Gerke

Professor Dr Karl Hamberger

Professor Dr Peter Schaubach

## Department of Supply Chain Management & Information Systems (SCM&IS) (located Konrad-Adenauer-Ring 15)

The SCM&IS Department brings together under one umbrella three institutes at EBS Business School: the Institute for Supply Chain Management (ISCM), the Institute of Research on Information Systems (IRIS), and the Institute for Futures Studies and Knowledge Management (IFK). With 3 senior professors, 2 assistant professors, and more than 25 research assistants this Department is one of the largest at EBS Business School.

Through our combination of research in the fields of purchasing, logistics and supply chain management, process, knowledge and information systems management, performance measurement and project management we offer a unique scientific portfolio – not only in Germany and Europe, but throughout the world. By linking the core competencies of our Institutes and Chairs we aim to generate synergies in research and teaching. Each of our Institutes is active in cutting-edge research areas that are addressed in competence centers.

### Competence Centers at SCM&IS:

- Financial Supply Chain Management
- Futures Studies
- Information and Knowledge Management
- Logistics & Supply Chain Management
- Purchasing & Supply Management
- Strategic IT Management
- Sustainable Supply Chain Management

Furthermore, we offer a comprehensive range of study programmes, e.g. Bachelor courses, two elective modules in EBS Master's programmes, a doctoral programme and several executive education courses as well as certificate programmes.

The main focus of our activities is on applied research and teaching in the field of logistics and engineering, strategy development, process modelling and information systems.

### Programmes & Courses

The Institutes in the SCM&IS Department offer a wide range of Bachelor's and Master's programmes as well a selection of executive education programmes.

Our Department aims to equip (young) individuals with methodical competence and practical experience, enabling them to seek solutions to specific problems, at the same time meeting academic and business world requirements. Our professional team of professors, assistant professors, top managers and associate researchers provides comprehensive specialist knowledge and delivers the latest valuable research findings. An integrated teaching approach combines traditional lectures with case studies, field trips, interactive workshops and participation in research projects. Moreover, we welcome and encourage an intensive exchange with international partners from science and practice.

We currently offer courses in the following programmes:

- Bachelor (BSc) in General Management
- Master (MSc) in Management
  - Specialization Supply Chain Management
- Doctoral Studies
- Executive Education

### Members in the Department



*Professor Dr Stefan Smolnik  
Head of Department Head  
of IRIS  
Assistant Professor of  
Information and Knowledge  
Management  
Phone +49 611 7102 2177  
stefan.smolnik@ebs.edu*

#### Research Fields:

- Success of Information and Knowledge Management Systems
- Usage and Adoption of Collaborative Systems in Organizations
- Competence Management and Organizational Learning
- Document Management and Information Lifecycle Management
- Implications of the Organizational Digitalization



*Sylvia Werz  
Academic Manager  
Phone +49 611 7102 2186  
sylvia.werz@ebs.edu*



*Professor Dr Sebastian Heese  
Chair of Supply Chain  
Management  
Research Director  
Phone +49 611 7102 2100  
sebastian.heese@ebs.edu*

**Research Fields:**

- Supply Chain Management
- Supply Chain Conflict and Coordination
- Retail Operations
- Healthcare Operations



*Professor Dr Gernot Kaiser  
Assistant Professor of Ser-  
vice Operations Management  
and Document Logistics  
Phone +49 611 7102 2140  
gernot.kaiser@ebs.edu*

**Research Fields:**

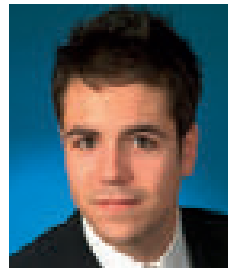
- Service Supply Chain Management
- Supply Chain Integration
- Decision-Making in Supply Chains



*Professor Dr Gerold Riempp  
Chair of Information  
Management and Systems  
Phone +49 611 7102 2166  
gerold.riempp@ebs.edu*

**Research Fields:**

- Customer & Supplier Relationship  
Management
- Strategic IT Management
- Knowledge Management



*Professor Dr Kai Foerstl  
Assistant Professor of Global  
Sourcing  
Phone +49 611 7102 2170  
kai.foerstl@ebs.edu*

**Research Fields:**

- Global Sourcing Decision-Making
- Sustainability in Supplier Decision-Making
- Supply Chain management and Innovation  
Projects

**Adjunct Professor**

**Professor Ram Narasimhan**  
Michigan State University, USA  
Adjunct Professor of Supply Chain  
Management

## Department of Innovation Management & Entrepreneurship (IME)

(located in the Burg)

The Department of Innovation Management & Entrepreneurship (IME) and its affiliated Strasczeg Institute for Innovation and Entrepreneurship (SIIE) includes two senior professors, three assistant professors, two honorary professors and over 20 members of staff. The IME Department is headed by Professor Dr Ronald Gleich. It is one of the largest research institutions in the field of Innovation Management, Controlling and Entrepreneurship in Germany.

Guided by the underlying principle “Creating and Managing Success through Innovation”,

IME focuses on two main objectives: “Creating Innovation” and “Managing Innovation”. Our aim is to enhance firms’ competitiveness by means of sustainably increasing innovation strength, by target-oriented growth management, performance management, in particular performance measurement & control, operational excellence, and project management, as well as the continuing professional education of specialists and executives.

With specialized researchers in four divisions and in collaboration with research and corporate partners, we conduct research into the conditions, structures and processes essential for entrepreneurship and successful innovation.



### IME Department



#### Innovation Management and Entrepreneurship (IME)

Head of Department: Prof. Dr. Ronald Gleich



#### Strasczeg Institute for Innovation and Entrepreneurship (SIIE)

Executive Director: Prof. Dr. Ronald Gleich | Assistant: Stefanie Laquai

##### Controlling & Innovation



Prof. Dr. Ronald Gleich



Prof. Dr. Christof Schimank

##### Innovation Management



Prof. Dr. Sven Heidenreich



Christoph Schneider



Prof. Dr. Patrick Spieth

##### Entrepreneurship



Prof. Dr. Heinz Klandt



Prof. Dr. Diane Robers



Prof. Dr. Florian Täube

##### Security & Innovation



Dr. Christoph Georgi

##### Executive Education



Jasmin Engel, M.A.

##### Academic Management



Hanna Halstrick

**Further Professorships:** Katrin Talke (Adjunct), Jaideep Motwani (Visiting), Andreas Wald (Visiting)

Basic research builds the scientific foundation of our work, at the same time we ensure our research is application-oriented and produces practically relevant findings. To this end, we cooperate with and maintain an extensive regional, national, and international network of partners from practice and research. In addition, we actively disseminate our research findings in the scientific community and business practice.

### Programmes & Courses

The IME Department offers a well-balanced and wide range of programmes to equip tomorrow's managers with the requisite knowledge and skills for successful entrepreneurship and innovation management. Highly qualified experts from industry are integrated into lectures and support the Department's team as external faculty delivering academically sound yet practically relevant courses.

Beyond lectures and seminars we offer scientific support and supervision for Bachelor's and Master's theses – numerous students have taken advantage of this opportunity in recent years. As part of extra-curricular activities we offer two lecture series complementing our lectures: “Innovation and the Future – Talking with Experts” and “Aviation Management – Current Challenges and Trends”, featuring top managers from innovation and entrepreneurship as well as from adjacent fields of interest. Through discussions with outstanding personalities from business practice, students are able to enrich their theoretical basis with real-life examples.

### Bachelor's programme “General Management”:

- Strategic Analysis and Concepts (5<sup>th</sup> semester)
- Essentials of Entrepreneurship (5<sup>th</sup>/6<sup>th</sup> semester)
- Innovative Entrepreneurship (5<sup>th</sup>/6<sup>th</sup> semester)
- Innovation Management (6<sup>th</sup> semester)
- Case Study Innovation Management (6<sup>th</sup> semester)

### Bachelor's programme “Aviation Management”:

- Introduction: Cooperation in the Aviation Industry (1<sup>st</sup> semester)
- Aviation Law & Policy (1<sup>st</sup> semester)
- Aircraft Management (2<sup>nd</sup> semester)
- Airline Marketing (3<sup>rd</sup> semester)
- Literature Review in Aviation Management (3<sup>rd</sup> semester)
- Revenue Management (5<sup>th</sup> semester)
- Network Management (5<sup>th</sup> semester)
- Airline Business Models (6<sup>th</sup> semester)
- Airport Management (6<sup>th</sup> semester)
- Air Cargo Management (6<sup>th</sup> semester)

### Master's programme:

- Product and Service Innovation
- Innovation Management Seminar
- Growth Management
- Innovation Management & R&D in the Automotive Industry
- Corporate Entrepreneurship

### MBA programme:

- Entrepreneurship & Innovation Management
- Global Consulting Project (in cooperation with the Department's industry partners)

**If you have any questions, please do not hesitate to contact us.**

## Members in the Department



*Professor Dr Ronald Gleich  
Head of Department  
Executive Director Strascheg  
Institute for Innovation and  
Entrepreneurship (SIE)  
Endowed Chair of General  
Management & Industrial Man-  
agement  
Phone +49 611 7102 1331  
ronald.gleich@ebs.edu*

### Research Fields:

- Management Control Systems
- New Budgeting Systems
- Performance Measurement /Balanced Scorecard
- Innovation Management (Service, Machinery and Automotive Industries)



*Hanna Halstrick  
Academic Manager  
Phone +49 611 7102 1349  
hanna.halstrick@ebs.edu*



*Professor Dr Heinz Klandt  
Professor of  
Entrepreneurship  
Phone +49 611 7102 1343  
heinz.klandt@ebs.edu*

### Research Fields:

- Entrepreneurship, SMEs
- Analysis and Assessment of Entrepreneurial Personality
- Innovative/technology based start-ups/IT industry
- Finance for Entrepreneurs: Intrapreneurship, CVC, Business Angels
- Entrepreneurial Climate, Statistics of Business Registrations
- Business Simulation Games/Method of Simulation
- Methods of Empirical Research



*Professor Dr  
Sven Heidenreich  
Assistant Professor of  
Service Management and  
Innovation  
Phone +49 611 7102 1335  
sven.heidenreich@ebs.edu*

### Research Fields:

- Adoption and Diffusion Theory
- Resistance to Innovation
- Innovation Networks
- Tariff Choice Behaviour
- Customer Co-Creation
- Structural Equation Modeling
- Experimental Research



*Professor Dr Patrick Spieth  
Assistant Professor of  
Innovation and Aviation  
Management  
Phone +49 611 7102 1374  
patrick.spieth@ebs.edu*

**Research Fields:**

- Innovation Project Portfolio Management
- Innovation Strategy
- Business Model Innovation
- Innovation Networks



*Professor Dr Diane Robers  
Honorary Professor of  
Entrepreneurship  
Phone +49 611 7102 1355  
diane.robers@ebs.edu*

**Research Fields:**

- Entrepreneurship
- Corporate Entrepreneurship
- Strategy Implementation / Balanced Scorecard
- Service Innovation / Service Productivity
- Innovation Management & Controlling

**Research Directors**



*Professor Dr Florian Täube  
Assistant Professor of  
Growth Management  
Phone +49 611 7102 1375  
florian.taeube@ebs.edu*

**Research Fields:**

- Organization and Management Theory
- Technology and Innovation Management
- International Business
- Growth Management and Entrepreneurship



*Dr Christoph Georgi  
Director Strategic Projects  
Research Director  
Security & Innovation  
Phone +49 611 7102 2067  
christoph.georgi@ebs.edu*

**Research Fields:**

- Corporate Security Management
- Aviation Security
- (Corporate) Entrepreneurship
- Competitive Intelligence

**Project focus**

- Center for Management in the Machinery Industry (<sup>M</sup>MIND)
- House of Ventures
- National Competence Center Aviation Security Research (NCAS)





*Christoph Schneider*  
 Research Director  
 Innovation Management  
 Phone +49 611 7102 1367  
 ch.schneider@ebs.edu

**Research Fields:**

- Green Innovation
- Energy Efficiency
- Alternative Mobility
- Cost Management
- Project Management

**Adjunct Professor**

**Professor Dr Katrin Talke**

Adjunct Professor of Corporate  
 Entrepreneurship

**Honorary Professor**

**Professor Dr Christof Schimank**

Honorary Professor of Innovation and Control

## Department of Governance and Economics (located in the Atrium House)

EBS has always aimed at offering future business leaders a cutting-edge education that will enable them to develop solutions in all business fields. Leaders in business and politics have to master challenges involving complex, multi-level regulatory models that shape the state, the economy and society. With the research and courses offered by the Department of Governance and Economics, EBS meets the rising demand for managers who are familiar with the theoretical and practical correlations between politics, institutions, and economic growth and can deliver first-class performance at the intersection of business and politics.

The Department cooperates closely with EBS Law School, founded in 2010, and provides an important part of the teaching for the Master in Business programme for EBS law students. By closely linking the fields of law, governance and economics, EBS underlines the importance of a sound education addressing the fundamental principles of business and commercial law for future managers and lawyers. Furthermore, research and teaching at the University benefit from the synergies between law, governance and economics. Interdisciplinary research and education in the Department of Governance & Economics enhances the prospects of EBS graduates to meet the challenges facing globally thinking managers in today's economy.

Professors and lecturers in the Department of Governance & Economics teach courses in the following programmes:

- Bachelor in General Management
  - Bachelor in Aviation Management
  - Master's programmes
  - MBA/EMBA programmes
  - Doctoral Studies programme
- Joint PhD programme with the universities of Frankfurt, Darmstadt and Mainz

## Members in the Department



*Assistant Professor Dr  
Jenny Kragl  
Head of Department  
Professor of Law and  
Economics  
Phone +49 611 7102 1529  
jenny.kragl@ebs.edu*

### Research Fields:

- Organization Theory
- Personnel Economics
- Behavioural Economics
- Experimentall Economics



*Professor  
Bruno Deffains, PhD  
Professor of Law and  
Economics  
Phone +49 611 7102 1532  
bruno.deffains@ebs.edu*

### Research Fields:

- Law & Economics
- Industrial Organization
- Public Economics



*Dr Clemens Buchen  
Lecturer  
Phone +49 611 7102 1520  
clemens.buchen@ebs.edu*

### Research Fields:

- New Institutional Economics
- Evolutionary Game Theory



*Dr Katharina Reinard  
Lecturer  
Phone +49 611 7102 1532  
katharina.reinard@ebs.edu*

### Research Fields:

- Exchange Rates and Interest Rate Differentials  
– Uncovered Interest Rate Parity
- Systemic Risk in Market Structures – Hedge Fund Industry
- Foreign Direct Investments

### Adjunct Professor

**Professor Benjamin Bental, PhD**  
University Haifa, Israel  
Adjunct Professor of Law & Economics

### Honorary Professor

**Professor Dr Michael Hüther**  
Director, Cologne Institute for Economic  
Research (IW Köln)

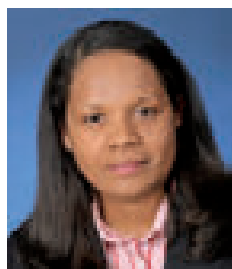
## Directorate Education at EBS Business School

### Vice Dean Education

The Vice Dean Education, Dr Petra Kreis-Hoyer, is responsible for the entire range of EBS Business School degree programmes. These include the full-time Bachelor's, Master's and MBA degree programmes as well as the executive degree programmes. Dr Kreis-Hoyer represents the Dean in all matters relating to the development and delivery of programmes, quality management and programme accreditation.



*Dr Petra Kreis-Hoyer  
Vice Dean Education  
Phone +49 611 7102 1749  
petra.kreis-hoyer@ebs.edu*



*Marcia Popaja  
Personal Assistant  
to the Vice Dean  
Phone +49 611 7102 1763  
marcia.popaja@ebs.edu*



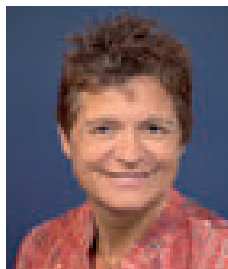
*Dr Sabine Altiparmak  
Manager Strategic Projects  
Phone +49 611 7102 1518  
sabine.altiparmak@ebs.edu*

### Bachelor's Programmes

Petra Weiler, Associate Dean Undergraduate Programmes, is responsible for the BSc programmes which include:

- Bachelor in General Management
- Bachelor in General Management, track International Business Studies
- Bachelor in Aviation Management.

Petra Weiler is supported by Programme Coordinator Christina Bauer. Together they focus on the design, implementation and regular review of programmes. The aim of providing high-quality undergraduate programmes is achieved in close cooperation with all departments. To ensure successful management of the programmes the team works intensively together with administrative staff.



*Petra Weiler  
Associate Dean  
Undergraduate Programmes  
Phone +49 611 7102 1772  
petra.weiler@ebs.edu*



*Christina Bauer  
Programme Coordinator  
Bachelor  
Phone +49 611 7102 1766  
christina.bauer@ebs.edu*

## Master's Programmes

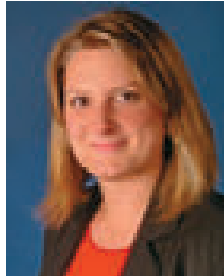
Programme Manager Denise Neu is responsible for the EBS MSc programme family and Part-time MA programme family, which include

- Master in Automotive Management (MSc)
- Master in Finance (MSc)
- Master in Management (MSc)
- Master in Marketing (MSc)
- Master in Real Estate (MSc)
- Master in Wealth Management (MA)
- Master in Real Estate Investment & Finance (MA)
- Executive Master in Real Estate (MA)

Programme Manager Cornelia Storch is responsible for the Part-time Master of Arts programme Master in Business Innovation (MBI).

As Programme Managers, Denise Neu and Cornelia Storch design, implement, organize, review and adapt the programmes in cooperation with faculty and administration with the aim of providing high-quality Master's programmes that are in line with EBS standards and mission.

In case of questions concerning your study programme, Denise Neu and Cornelia Storch will be happy to provide support and guidance throughout the course of your studies at EBS.



*Denise Neu  
Programme Manager  
Master  
Phone +49 611 7102 1762  
denise.neu@ebs.edu*



*Cornelia Storch  
Programme Manager  
Master in Business  
Innovation  
Phone +49 611 7102 1371  
mbi@ebs.edu*

## MBA/EMBA Programmes

The MBA/EMBA team is responsible for EBS Full-time MBA, The Durham University Business School & EBS Business School Executive MBA and the Executive MBA Health Care Management.

The team designs and implements the programmes in cooperation with all the relevant departments and partner universities with the aim of providing high-quality MBA programmes that are in line with EBS standards and mission.

Associate Dean Brian Gibbs and Programme Manager Suzan Sommer manage and support the EBS Full-time MBA.

The Durham University Business School & EBS Business School Executive MBA, a dual degree programme delivered jointly by Durham University Business School (UK) and EBS Business School, is managed and supported by Associate Dean Brian Gibbs and Programme Manager Julia Hintze.

Claudia Hirning manages and supports the Executive MBA Health Care Management.



*Brian Gibbs  
Associate Dean  
EBS Full-time MBA/  
The Durham University Business School & EBS Business School Executive MBA  
Phone +49 0611 7102 1745  
brian.gibbs@ebs.edu*



*Suzan Sommer  
Programme Manager  
EBS Full-time MBA  
Phone +49 611 7102 1769  
suzan.sommer@ebs.edu*



*Julia Hintze  
Programme Manager  
The Durham University Business School & EBS Business School Executive MBA  
Phone +49 611 7102 1746  
julia.hintze@ebs.edu*



*Claudia Hirning  
Programme Manager  
Executive MBA  
Health Care Management  
Phone +49 611 7102 1875  
claudia.hirning@ebs.edu*



inspiration

EBS Law School

3

## Studying law at EBS – the right choice!



*Professor Dr Dr Gerrick Frhr. v. Hoyningen-Huene  
Dean of EBS Law School*

*Dear Students*

*In recent years we have witnessed changing demands on the legal profession. Personal competencies are gaining in significance.*

*Communication and negotiation skills have become key qualifications and really make the difference between a good and an excellent legal professional. Moreover, as expertise in complex international economic issues is a crucial success factor, solid business knowledge has become virtually indispensable for a career in today's legal world.*

*Legal education at EBS Law School aims to develop responsible, forward-looking individuals equipped with excellent legal skills, an understanding of business and management issues, methodological competence, communication and negotiation skills and a strong international perspective.*

*Outstanding professors and an integrated teaching approach involving lectures, study groups and autonomous learning groups prepare you for particularly successful completion of the first law examination (previously: first state examination). EBS Coaching Programme that is available to students throughout their studies and the Studium Universale play a central role in our curriculum, preparing students for future professional challenges such as management and leadership responsibilities.*

*We aim to educate the entrepreneurial-minded legal professional. The designation "EBS legal professional" will become a brand and a hallmark of quality.*

*Whether you choose to become a lawyer or public prosecutor, a professional in a large law firm, in a national or international organization or in a business-focused institution, as a qualified EBS legal professional career doors will open to you everywhere.*

*I look forward to welcoming you soon to EBS Law School.*

A handwritten signature in blue ink, appearing to be 'Gerrick Frhr. v. Hoyningen-Huene'. The signature is stylized and written in a cursive-like font.



## Who is who at EBS Law School

### Dean's Office

The Dean's Office at EBS Law School comprises the Dean, the Executive Director, Programme Director, Academic Manager and Office Management.

The Dean bears academic and administrative responsibility for the Law School. Under the Dean's direction and in cooperation with faculty members programmes are developed and core research areas identified. The Dean represents the faculty within and outside the University.



*Dr Enrico Iannone  
Programme Director  
EBS Law School  
enrico.iannone@ebs.edu*

The Programme Director is responsible for all questions surrounding the curriculum. He supports the Dean and Executive Director in designing the programme, in the accreditation process and in the evaluation and further development of the degree programme.



*Dr. jur. Patrick Schroer, MBA  
Executive Director  
EBS Law School  
Phone +49 611 7102 2253  
patrick.schroer@ebs.edu*

Together with the Dean, the Executive Director is responsible for the strategic direction of the Law School and is Head of the Dean's Office. His responsibilities include in particular overall administrative coordination, the design and implementation of faculty structure and maintaining contact to EBS Law School's partner network.



*Ass. jur. Julia Matlachowsky  
Academic Manager  
EBS Law School  
Phone +49 611 7102 2251  
julia.matlachowsky@ebs.edu*

As Academic Manager, Julia Matlachowsky is responsible for the coordination and organization of all issues concerning the Law School's Chairs and the Dean's Office. In this position she is the central point of contact for all internal and external faculty-specific questions in the areas of teaching and research.



*Karina Klotz*  
*Programme Manager*  
*Phone: +49 611 7102 2250*  
*karina.klotz@ebs.edu*

Programme Manager Karina Klotz is, amongst others, responsible for all administrative queries relating to the curriculum, teaching evaluation and optional language courses. She also coordinates contracts and teaching assignments for external lecturers and monitors budgetary issues. Furthermore, she acts as the interface for courses in business law at EBS Business School.



*Dr Thorsten Sasse*  
*Programme Management*  
*Phone: +49 611 7102 2244*  
*thorsten.sasse@ebs.edu*

Dr Thorsten Sasse, Programme Management, is responsible for the content and organization of the “exam clinic”/exam coaching and examination preparation.

## Faculty Members

### Civil Law

#### Chair of Civil Law, Commercial and Business Law, European and International Private Law



*Professor Dr. iur.*  
*Christoph Busch*  
*Maître en Droit*  
*Phone: +49 611 7102 2224*  
*christoph.busch@ebs.edu*

#### Chair of Civil Law, German and International Business and Company Law, and Capital Markets Law



*Professor Dr. rer. pol.*  
*Michael Nietsch*  
*Phone: +49 611 7102 2235*  
*michael.nietsch@ebs.edu*

#### Chair of Civil Law, Civil Procedure and Private International Law



*Professor Dr. iur.*  
*Matthias Weller*  
*Mag.rer.publ.*  
*Phone: +49 611 7102 2217*  
*matthias.weller@ebs.edu*

**Chair of Civil Law, Comparative Law and Private International Law**

N. N. from September 2013

**Chair of Civil Law, German and European Employment Law and Comparative Law**



*Professor Dr. iur.  
Felix Hartmann  
LLM (Harvard)  
Phone: +49 611 2234  
felix.hartmann@ebs.edu*

**Public Law**

**Chair of Constitutional, Administrative and European Law, New Technologies Law and the History of Law**

*Professor Dr. iur. Dr. phil.  
Martin Will, MA, LL.M.  
(Cambridge)  
Vice Dean EBS Law School  
Phone: +49 611 7102 2232  
martin.will@ebs.edu*

**HEUSSEN Endowed Chair of Public and European Law, Renewable Energy Law, Environmental and Planning Law**

N. N. from September 2013

**Chair of Administrative and Constitutional Law, Public and Private Business Law**



*PD Dr Markus Ogorek  
LLM (Berkeley)  
Phone: +49 611 7102 2237  
markus.ogorek@ebs.edu*

**Chair of Criminal Law, Law of Criminal Procedure, Criminal Economic Law and Criminal Tax Law**



*Professor Dr. iur.  
Georg Steinberg  
Phone: +49 611 7102 2229  
georg.steinberg@ebs.edu*

**Chair of Criminal Law, Criminal Procedure Law, Philosophy of Law and Comparative Criminal Law**



*Professor Dr. iur.  
Susanne Beck  
LLM (LSE)  
Phone: +49 611 7102  
susanne.beck@ebs.edu*

## Legal Studies at EBS Law School

Legal education at EBS Law School aims to develop responsible, forward-looking personalities equipped with excellent legal skills, an understanding of business and management issues, methodological, communication and negotiation competence, and a global perspective.

Our curriculum is geared to towards achieving this objective. Top priority in the programme is the German “first examination in law” and, on the way to achieving this, the Bachelor of Laws (LLB). State-of-the-art teaching, first-class lecturers from the world of professional practice and academia are distinctive features of EBS Law School’s unique education profile. During an integrated semester abroad you will become familiar with the mindsets of legal professionals in other countries. This will help you as a German lawyer, for instance, to explain legal issues to international stakeholders and, vice versa, to understand the viewpoints of lawyers from other countries. Specialist options in business law round off your education as an EBS legal professional.

### Curriculum

Focusing on the model of the “fully qualified legal professional” (*Volljurist*), the legal studies programme offered at EBS Law School centres on equipping students with excellent legal knowledge and skills. The core curriculum covers civil, public and criminal law, and subject area specializations focus on business law. We currently offer the following specialist options, of which you may choose one:

- Corporate and Restructuring Law
- Banking and Capital Markets Law
- Employment and Services Law
- Public Commercial Law

The academic year at EBS Law School is organized in three trimesters, each trimester comprising 12 weeks of teaching. Trimesters 1 to 4 constitute the basic course of studies and are followed by the main course of studies in trimesters 5 to 10. The 7<sup>th</sup> trimester is spent abroad at one of our international partner



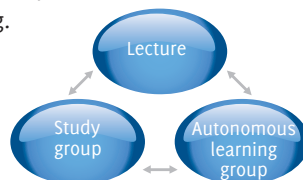
universities. Part of the main course of studies (trimesters 8 to 10) is devoted to subject area specializations where you are able to choose from a range of specialist options in business law. We provide comprehensive guidance and support for the state examination from the very beginning with trimesters 11 and 12 exclusively reserved for exam preparation.

In trimester 10 EBS law students gain their first professional qualification, the Bachelor of Laws (LLB). Additionally and closely coordinated both in time and content with the law programme, you have the opportunity to obtain a further qualification in business and management at EBS Business School that leads to a Master of Arts in Business (MA).

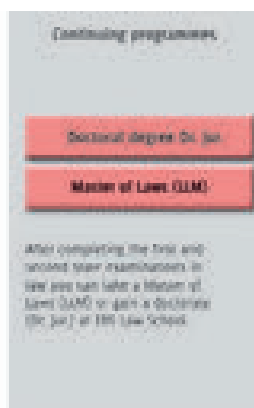
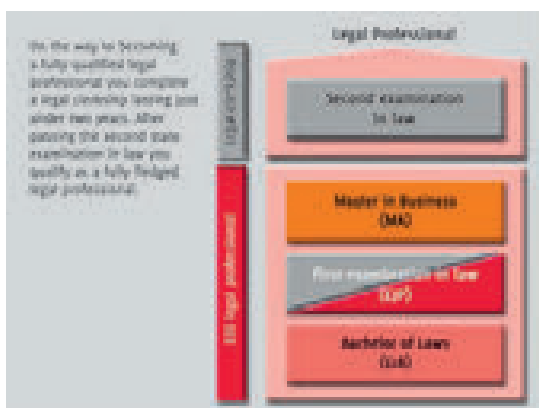
### Methodology and didactic approach

Aiming to improve general studying capability from the very beginning of studies, EBS Law School curriculum focuses on innovative teaching methods to optimally prepare students for examinations and enhance later career prospects. Competent use of legal software and legal databases is becoming increasingly important for effective and successful legal work.

Characterized by an integrated approach involving lectures, study groups and autonomous learning groups, the basic course of studies covers civil, public and criminal law and is designed to familiarize students from the outset with essential aspects of structured legal thinking.



In study groups of about 20 students lectures are reviewed and revised using case law and exercises. This gives students the opportunity to practice subsumption methods, methodological competence, time management and prepare for exams. In autonomous learning groups of about 5 students you prepare for lectures and develop solutions to specific legal issues. This enhances your ability to build logical structures and define classification levels. In study groups and through autonomous learning you have the opportunity to practice not only self-organization but also presentation and group discussion skills. This in turn reinforces rhetorical and social competencies such as the capacity for integration and compromise.





Sophie-Charlotte von Bierbrauer  
zu Brennstein  
Student Representative  
EBS Law School

*"It's the unique EBS spirit and EBS community combined with the opportunity to take on responsibility and improve leadership skills in different student initiatives, which makes EBS more than just a university.*

*EBS students are characterised by their international perspective, their ability to cope with a heavy workload, their willingness to rise*

*to new challenges, and their practicality and awareness of their own strengths.*

*The excellent academic curriculum, the international dimension, the practice-oriented teaching concept and the support of numerous highly-regarded partners and sponsors are the best prerequisites for a successful career start."*





Felix Schröder  
Student Representative  
EBS Law School

*"Being a student at EBS Universität is more than just an academic education. Besides the challenging workload and ideal study conditions, personal development plays an important role.*

*EBS offers internationality combined with a professional practice orientation. Not to mention the wide range of student activities. By engaging in the student initiatives and projects you gain practical problem-solving competency.*

*This very often distinguishes EBS graduates from graduates of other universities – making the difference!*

*My decision to study at EBS was absolutely right and my expectations have been more than fulfilled. Students and the University consider themselves partners – a win-win situation for both sides! I am extremely happy with what I am able to learn each day at EBS."*







inspire

Campus Locations

4

## University Facilities and the Learning Environment

The University has two sites: Rheingau/Oestrich-Winkel, where the Business School is mainly located, and Wiesbaden, which is primarily home to EBS Law School.



### Rheingau/Oestrich-Winkel

#### Schloss

The Schloss Campus comprises the old Schloss Reichartshausen monastery building and a modern building, the Kiep Centre, together covering approximately 7,000 m<sup>2</sup>. There are a total of 26 lecture halls, two event rooms, two conference rooms and 16 breakout rooms. Based on the School's principle of intensive, team-based learning, most of these rooms are relatively small, seating between 14 and 88 people. There are three lecture halls with a seating capacity of over 100, including the auditorium.

The two buildings comprising Schloss Reichartshausen also house offices and convention

rooms, plus a Student Cafeteria. The campus also incorporates a 15th century wine cellar, adjacent to the refectory, which is frequently used for School celebrations and events. The Kiep Centre hosts the main auditorium for 100 students, four additional lecture halls seating between 52 to 72 students, as well as the 16 breakout rooms for group work and the library. All main lecture halls are equipped with multimedia projectors, video equipment, overhead projectors, PCs for lecturers and sound systems. Two lecture halls are also equipped with TV SAT receivers. In order to foster a highly interactive atmosphere between the lecturers and students, most multimedia equipped lecture rooms

feature tiered horseshoe seating. Additionally, there are portable white boards, flipcharts, Metaplan and pin boards, overhead projectors, beamers, TV, video recorders and PCs with WLAN for use in all classrooms by students and staff.

In 2010 a plan entitled “Vision 2018” was agreed to develop the “Schloss” to include new lecture halls, office space, up to 175 student housing rooms, sport facilities and parking space. This 75m euros concept allows a step-by-step realisation as fundraising progresses. One of the first projects to be realised will be the construction of the student housing facility. Financing will either come from investors or through PPP structures.

### **Burg**

The Burg is located close to the Schloss and houses the IME Department, EBS Language Institute, the School’s computer facilities including two computer labs, as well as eight classrooms typically used for language classes and seminars.

Most of the language labs are equipped with beamers, pin boards, loudspeakers and overhead projectors. Two labs are equipped with portable audio and video equipment, portable beamers, cameras, TV with satellite reception, video to DVD conversion and 16 head sets. CDs und DVDs are kept in the library.

### **Brentanoscheune**

The Brentanoscheune is located next to the Burg. It is in temporary use and hosts one big lecture hall of approximately 200 m<sup>2</sup>.

### **Altes Rathaus**

EBS Executive Education moved to the Altes Rathaus in 2007. The facilities consist of three state-of-the-art lecture rooms mainly used for executive education programmes, a conference room, a library and 30 other workplaces.

### **Wiesbaden**

#### **Atrium House**

The Atrium House is the temporary home to EBS Universität and is also partly used by EBS Business School faculty as well as the FARE and GE Departments. The building will be vacated in 2016 when Wiesbaden’s former regional court house has been refurbished with lecture halls, library and offices to constitute the new Wiesbaden Campus.

The Atrium House (total of 5,900 m<sup>2</sup>) hosts two major lecture halls (84 and 90 seats respectively) and a further thirteen rooms for teaching, study groups and autonomous learning groups (9-56 seats). Equipment in the lecture halls and classrooms include multimedia projectors, whiteboard projectors (Promethean), WiFi throughout the building, mobile microphone kits and presentation monitors; additional mobile facilities for computer training are planned. Six Internet terminals are also available.

#### **Konrad-Adenauer-Ring 15**

In close proximity to the Atrium House, the property was hired to provide additional capacity and currently houses the SCMAIS Department. It will be vacated on completion of the Wiesbaden Campus in 2015.



inspire

Student Body

5

## The Student Body at EBS



### Student Body

EBS Universität für Wirtschaft und Recht

#### Responsibility and Co-determination

All students enrolled at EBS are members in the registered association “*Studentenschaft der EBS Universität für Wirtschaft und Recht e.V.*”.

Once a year the students elect their representatives from the different semesters and degree programmes. The Presidents of the student body constitute the association’s governing board, have the right of co-determination in the various University boards and committees, and represent the students in the University and to the outside world.

The presidents of the student body, the chairpersons of the student-led initiatives (the so-called “*Ressorts*”), and other interested students meet once a week at the Student Council (*Studentischer Rat*) to discuss topics relating to University policy and to coordinate

the various student activities. Through the structures of the student body EBS students are able to play an active role in shaping and further developing our University! And student activities contribute to campus diversity.

The student-led initiatives and their events play a significant role in university life. Almost every student is involved in one or more of the 20 initiatives and through their engagement they enrich campus life. Sports, cultural events and parties regularly take place at EBS. Not only are the student initiatives important in strengthening the strong community spirit within the student body, but they also give students the opportunity to assume full responsibility for smaller and larger projects.



Contact:

[studentensprecher@ebs.edu](mailto:studentensprecher@ebs.edu)





Fabian Meeh,  
Former Student Representative  
BSc General Management

Dear Fellow Students,

*I am happy to welcome you to EBS Universität!*

*Exciting times lie ahead of you. You will need to work and study hard, but it will be a long lasting experience of a lifetime.*

*You will meet interesting people, learn a lot about business and, in particular, develop your personality.*

*After finishing grammar school I had to decide where to start my university studies. Looking back, going to EBS was one of the best decisions I have ever made.*

*In addition to an outstanding, practice-oriented education, EBS offers its students unique opportunities in the area of personal development. Besides the opportunity to take part in professional coaching sessions, numerous student initiatives provide the chance to take on responsibility from a very early stage, practice teamwork and develop a performance-oriented management style. Moreover, teamwork and sharing ideas with your fellow students is a vital component in our community, which is also supported by our international exchange students.*

*The atmosphere on campus can best be described as very inspiring and stimulating.*

*One thing though is even more important than anything else:*

*You will only be successful and get the best out of studying at EBS if you really make the most of the opportunities offered – Become active in the student initiatives and in our socio-cultural projects, develop your personality together with your coach, and study hard!*

*At the end of the day, you will look back and know that it was worth it. You belong to a fantastic community and should behave accordingly. Getting engaged in the community and making your own contribution to drive forward the development of the student body and the University as a whole is what is expected of you.*

*These are the values you should always remember. You are part of something special!*

*It might not be easy at EBS, but always remember the following:*

*“Some people dream of success, while others wake up and work hard at it.”*

*I wish you the best of success.  
Enjoy your studies!*

## Extracurricular Commitment at EBS

Social commitment plays an important role at EBS and participation in extracurricular activities is expected and encouraged by both the University and the student body! Such extracurricular activities comprise, on the one hand, all activities aimed at realizing the objectives of the student body and include support for our events, the integration of our numerous visiting students, etc. They also include engagement in our student initiatives, the so-called *Ressorts*, that shape student life at EBS. Some initiatives devote themselves to the organization of business congresses, whilst others are concerned with topics that are complementary to our studies at EBS. There are also initiatives that focus on discussions and debating, music, sports and organizing EBS parties. We offer a wide variety of activities to satisfy all students' interests.

In order to implement EBS vision of leadership, it is vital to take into consideration a student's extracurricular commitment. At EBS Business School a student's semester abroad ranking, which decides the order in which students can choose the university for their semester abroad, is therefore not exclusively determined by

academic results. Extracurricular commitment also plays a significant role in this ranking. Moreover, final year students with outstanding social track records are honoured in the Dean's List.

Against this background the student body developed a system to evaluate extracurricular commitment, (*System zur Bewertung von außerrcurricularem Engagement – SBACE*), which is currently implemented at EBS Business School. This system aims to evaluate first year students' extracurricular performance as fairly, objectively and soundly as possible. Finally, a grade is awarded that reflects the quality and degree of extracurricular commitment, taking into consideration both types of activities outlined above. This grade accounts for 40% of a student's semester abroad ranking, with 60% representing academic performance.

We hope the above has given you a first impression of how important extracurricular activities are at EBS, and we look forward to introducing the guidelines of *the System zur Bewertung von außerrcurricularem Engagement* to you.





## Student Ressorts at EBS

In addition to their studies, all EBS students become involved in one or more of the EBS student initiatives, which today total around 20. These initiatives enrich everyday student life by organizing numerous activities and events that cover a wide spectrum of topics including art, culture, sport, charity work, business, politics, student management consulting, wine, international relations, investment, e-commerce, etc. They all make an important contribution to the strong community spirit that exists at EBS and enable students to become involved in areas of particular interest to them in addition to their studies. Several of the initiatives have been in existence for years, even decades, and have been organized by generations of students. Many are handed down each year and decisively shape EBS image. They have become part and parcel of campus life and preserve EBS traditions. They are instrumental in fostering the strong personality-oriented community spirit at EBS and give students the opportunity to engage in commitment that matches their interests. All activities are under the direction of and coordinated by the Presidents of the Student Body. Student-led initiatives at EBS are the following:



### 1. EBS Symposium

The largest student initiative at EBS! Our task is to organize the annual symposium, a business congress with over 1,000 participants, well-known speakers and including a recruiting fair with more than 40 participating companies. A whole year long approximately 60 students work feverishly at making the next Symposium better than the one before.



### 2. EBSpreneurship

Entrepreneurship is an important sub-discipline of business studies, which is the very reason why entrepreneurship is at the focus of this student initiative that undertakes numerous projects in this topic area. For instance, we organize lecture series in cooperation with experts, hold workshops, and organize a business plan competition as well as an entrepreneurial fair. Beyond this, we network and collect information for our members that is otherwise difficult to access. Our activities are interesting for all those planning to take over a family business, set themselves up in business or who pursue other business interests.



### 3. Supply Management Forum e.V.

*How can an organization reduce costs? In which areas can an organization dispense with things previously considered essential? In which parts of the world can we find affordable resources? Do we need more mobility to ensure low cost production, and is this compatible with corporate social responsibility? In the face of large-scale savings can we continue to fully address the issue of "Innovation" and at the same time create sustainability?*

Supply Chain Management that deals with these issues is an umbrella term summarizing in just three words questions relating to mobility, efficiency, effectiveness, innovation, sustainability, and digital networks. Because supply chain management today is more important than ever before, the EBS Supply Management Forum e.V. (SMF), an

initiative founded by EBS students in 2004, devotes itself to this topic. A core activity is the organization of the EBS Supply Chain Conference that takes place once a year on the EBS campus. Highlights of the event, in addition to numerous lectures, workshops and a career fair, are the panel discussion with top-class speakers and the “Supply Chain Management Awards” awarded by PRTM Management Consultants, Logistik Heute, and the Supply Chain Management Institute.



#### 4. EBS Real Estate

The EBS Real Estate Congress organized by the EBS Real Estate Management Institute (REMI) and its students is an annual one-day international conference that features presentations and discussions on recent developments in the real estate industry. The congress aims to critically discuss new mega trends in the property sector, with presentations, panel discussions, and numerous discussion forums addressing a wide range of questions. Since 2008, the conference also hosts a recruiting fair for graduates from real estate degree programmes.



#### 5. Students for Europe (SFE)

A small student initiative with a huge task! For more than 15 years, Students for Europe has been organizing an annual three-day international congress. Europe is the central topic of this congress, more precisely European economy, politics and culture. Approximately 150 persons come together each

year at a different European venue and take part in passionate discussions. There is also plenty of opportunity during the congress for networking with other participants from throughout the world and to visit other fairs and dialogue forums.



#### 6. EBS Marketing Ressort

In existence since 1998, this initiative enjoys a close relationship with the Chair of Strategic Marketing. Our objective is to critically reflect on trends and development processes in marketing, a discipline in business studies that has gained tremendous influence in recent years. We invite speakers to share their experiences and we also organize fireside talks. EBS Marketing Ressort is the result of the fusion of “Smile Marketing Forum” and “EBS Prisma”.



#### 7. In Vino Veritas (IVV)

“*In wine there is truth*”, is a well-known Latin phrase and a toast that for our wine culture initiative at EBS highlights above all the cultural significance of wine. Inspired by the location of our University amid the world-famous “*Rheingau*” with its rolling vineyards, we meet weekly aiming to expand our knowledge and understanding of oenology. Alongside the tight schedule of our business studies programme, we also like to focus on the social aspect. Through wine tasting, wine tasting tours and similar events in the region we seek, on the one hand, to identify our own personal taste and, on the other hand, to learn to ap-

praise wine and how to match wine to food. In cooperation with local vineyards and the local University of Applied Sciences which delivers a degree course in oenology, we offer all students at EBS a wide range of opportunities to increase their general knowledge on all aspects of wine.

## **EBS Sportressort** Studentenschaft EBS Universität

### 8. Sportressort

Welcome to the club! We organize not only the different weekly sports activities but also events such as the EBS Soccer League. This is also the opportunity to not only learn with exchange students or those from higher semesters, but also to spend a great time with them and enrich your cross-cultural experience.

## **Communicate** Studentenschaft der EBS Universität

### 9. Communicate!

How do I successfully convince others of good ideas? How can I arouse enthusiasm with my presentation? And what about the next round of exams? We address these and numerous other issues within our student initiative Communicate! In addition we regularly organize debates, workshops and tutorials.

## **EBSounds** Studentenschaft der EBS Universität

### 10. EBS Sounds

Looking for a really good score? Then the EBS Band is just the thing for you! Here you have the opportunity to take part in something

that does not otherwise belong to a business studies degree course: make music! We meet regularly, rehearse new pieces of music and get to know students from the other semesters. And then the big day! Whether playing at the *Frühlingsfest*, EBS Open Day or similar events, the Big Band always strikes the right “note”.

## **EBS Event** Studentenschaft der EBS Universität

### 11. EBS.Event

Entertainment for others is work for us! EBS.Event is the student initiative responsible for organizing large events. These include the parties in the student café “Cafta” on Open Day, the pool party at the end of the EBS Sports Challenge and events at conferences organized by other initiatives. EBS.Event also holds various smaller-scale events such as poker competitions, go kart racing, and schnitzel-eating contests. In the weekly meetings, members can contribute their own ideas and organize their own events.

## **International Student Relations** Studentenschaft der EBS Universität

### 12. International Student Relations (ISR)

The international guest students who spend study semesters at EBS should enjoy their time in the Rheingau to the full. To make sure they do, is the job of ISR. Our members are responsible for all activities surrounding our international guests, the “incomings”. We organize events ranging from city tours, e.g. to Berlin or Amsterdam, trips to the “*Oktobertfest*” in Munich, movie and karaoke nights to parties and

the very popular “Tauschi-Abende” (Incomings Evenings).

## **Studenten helfen** Studentenschaft der EBS Universität

### 13. Students Help

Since social commitment is a particular concern of EBS students, it is no wonder that “Students Help” is one of the most active student-led initiatives. Today, “Students Help” oversees a vast number of projects including organizing regular blood donation in cooperation with the German Red Cross, collecting donations for World Aids Day and the charity campaign “Weihnachten im Schuhkarton” (Christmas Shoebox Appeal).

And because people in our immediate vicinity are also in need of help, once a week we visit the “Lebenshilfewerk” (help for disabled persons) in Oestrich and a kindergarten in Kiedrich. In cooperation with the *Rheingau Kinderschutzbund* (child protection centre) we also offer individual private tutoring for socially disadvantaged school children.

## **ebITS – because IT matters** Studentenschaft der EBS Universität

### 14. ebITS

ebITS is responsible for dealing with all sorts of IT issues and, not surprisingly, is popular with the students. At ebITS we find solutions to computer problems, organize workshops on a wide variety of user programmes (Microsoft Outlook, PowerPoint, Excel and many others) as well as presentations given by experts on business information systems.

## **EBS.Invest** Studentenschaft der EBS Universität

### 15. EBS.Invest

Interested in finance? At EBS.Invest you’re at the right address. We organize regular workshops and lectures to deepen our understanding of swaps, options, derivatives, etc. and share our knowledge with our fellow members. We invite expert practitioners to EBS and issue the monthly newsletter EBS.Market that explores topics ranging from investment analysis to country analysis and also comments on current activities in the capital markets.

## **James Consulting** Students improving business Studentenschaft der EBS Universität

### 16. James Consulting GmbH

You don’t need to wait to graduate before embarking on a career in consulting! Since 1985, members of James Consulting, the student management consulting company at EBS, have been able to gain early consulting experience. This successful student-led initiative advises medium-sized and large international firms in business and technology questions. But James Consulting can do more: We also offer internal training programmes, run workshops with well-known consulting firms and organize the annual congress “Consulting Impulse”. Thanks to our membership in the nationwide association of student consulting firms, JCNetwork, James is also integrated into a network of academic and entrepreneurial partners.



### 17. Automotive Ressort

The automotive industry is Germany's strongest economic sector, and German brands lead the way worldwide in terms of technology, quality and outstanding design. Our initiative organizes guest evening lectures with leading industry representatives from sales, marketing, construction and design. Although a fairly young initiative, we have already been able to welcome several high-profile personalities from the automotive industry to EBS.



### 18. Moot Court Ressort

The Moot Court Ressort at EBS Law School gives students the opportunity to participate in simulated court proceedings, such as take place every day in German and international courtrooms. Students not only learn how to apply theoretical knowledge in the practical context, they also develop oral argumentation and strategic skills. Stepping into the roles of lawyers and judges gives them an insight into their future career. The initiative also organizes information sessions and workshops involving court practitioners.



### 19. Arts & Culture

Arts & Culture, a new addition to the variety of student initiatives at EBS Universität is directed at culturally-interested and aesthetically-mind-

ed students! Many students are extremely interested in arts, culture and fashion. Etiquette, too, requires a minimum degree of familiarity with cultural life and can therefore be considered quite relevant, even in a professional context. EBS Arts & Culture considers itself an educational 'Ressort' and will organize a number of events in the extensive field of arts, culture and fashion!



### 20. EBS Journalism

This student initiative offers a wealth of opportunities for students to undertake journalism projects. Through their active engagement in EBS Journalism and their own contributions and articles they will enrich life at our Business School and Law School. The EBS Magazine will be a university magazine published by students for students, staff, professors, friends and sponsors of our University. The magazine will contain a varied selection of interesting articles from the fields of law, law and society and faculty events. Whether academic articles, features, interviews or reports on activities and developments at EBS Law School, EBS Magazine aims to provide a broad spectrum of information on university life for our young faculty.

## Social Commitment

### MAD e.V.

The student association Make A Difference e.V. (M.A.D.) was founded at EBS Business School in 2005 after 15 students had spent one week of their first semester in a ghetto in Mississippi building a house for and together with an impoverished family. Since then, the association has grown to a total of over 100 members, with an increasing proportion of EBS alumni. Five house building trips to Mississippi have been made, funded by the participants and their engagement in fundrais-ing activities. In addition to the house building trips, M.A.D. is also concerned with other projects and relief activities which promote the association's objectives.

M.A.D's objectives are Sensitize – Help – Connect People, Worlds, and Efforts. As part of extending the scope of projects and our vision, planning is underway to extend activities to other campuses and found a company to ensure the association's long term financial independence.

Website: [www.mad-ev.org](http://www.mad-ev.org)

### Frühlingsfest

Since 2007, EBS students have organized the *Frühlingsfest* (former Rheingau Day) that takes place once a year. In a relaxed atmosphere, Rheingau residents have the opportunity to get to know EBS and its students.

The varied programme includes not only campus tours and presentations by the student initiatives, but also discussion forums on current topics from the region, an extensive children's programme complete with bouncy castle and giant slide, as well as the exhibition of paintings from a painting competition held in local kindergartens.



# High Quality Services



**HomeCompany**  
Wohnungsmakler

**Agentur für möbliertes Wohnen auf Zeit**

Rheinstraße 86 | 65185 Wiesbaden  
Telefon (06 11) 194 45 | Telefax (06 11) 3 60 22 78  
eMail: wiesbaden@homecompany.de  
Öffnungszeiten: Mo. - Fr. 9.00 - 17.00 Uhr  
**www.hc24.de**

**TAXIBOB**

Tag und Nacht  
Großraumtaxen auch vorhanden

E-Mail: 99000@taxibob.de

**06723-999 000**

**KFZ-ANKAUF**   
sowie **VERKAUF & EXPORT**

**HASSOUN-AUTOMOBILE.DE**  
seit über 15 Jahren

Karl-Bosch-Str. 14 · 65203 Wiesbaden  
E-Mail: autoverschiffung@aol.com  
Tel.: 0611 22066 · Fax: 0611 22067  
Mobil: 0171 5045285





inspire

Campus Facilities

6

## Library

EBS Library has two locations (Schloss Campus in Oestrich and the Atrium Campus in Wiesbaden). It maintains extensive reference collections and provides access to several databases containing leading scientific journals in the fields of business and law. The Library and academic chairs at EBS Business School currently offer over 35,000 media materials (monographs, doctoral theses, manuals, textbooks, working papers, etc.).

### EBS Business School Library (Schloss Campus, Oestrich)

#### Opening hours

During term:

Monday to Friday: 9am – 10.45pm

Saturday and Sunday: 11am – 7pm

During semester breaks:

Monday to Friday: 9am – 5pm

Saturday and Sunday: 11am – 7pm



*Dipl.-Bibl. Silva Schellhas  
Head of Library  
Phone +49 611 7102 2052  
business.library@ebs.edu*

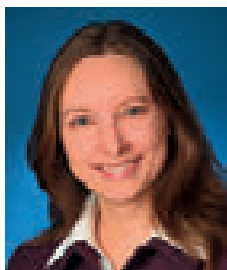
### EBS Law School Library (Atrium House, Wiesbaden)

#### Opening hours

During term:

Monday to Friday: 8am – 10.45am

Saturday and Sunday: 11am – 7pm



*Peggy Hanisch,  
Ass. jur.,  
Bibliotheksassessorin  
Head of Library  
Phone +49 611 7102 2252  
law.library@ebs.edu*



For further information please visit EBS Library homepage:  
[http://www.ebs.edu/  
law-school-bibliothek.html?&L=0](http://www.ebs.edu/law-school-bibliothek.html?&L=0)



For further information please visit EBS Library homepage:  
[http://www.ebs.edu/  
index.php?id=357&L=3](http://www.ebs.edu/index.php?id=357&L=3)

## Information Services

### Infrastructure

Computing facilities for students are installed in the Burg, the Kiep Center and the Atrium House. The Burg accommodates two computer labs on the ground floor with 32 workstations, all equipped with internet and printer access. In addition, 25 network connections are available for student notebooks. All students have 24 hour access to computer labs and group study rooms. In the Kiep Center library there are a further 12 work stations for users. All work stations in the library are equipped with Microsoft Office, Internet Explorer/Mozilla Firefox, and Adobe Acrobat Reader. All other workstations in the computer labs are equipped with Microsoft Project Professional, Microsoft Visio Professional, MATLAB, Mind Manager, Lotus Notes, SAP GUI, ARIS Toolset, Open office, Java, Micro Strategy, SPSS, and EViews. New packages will be installed according to teaching requirements.

The Atrium House has been recently equipped with 50 pool notebooks, allowing flexible use for test sessions and as a certified TOEFL test centre.

The computers in the Burg are also used for TOEFL tests.

EBS Universität runs two certified TOEFL test centres. Print, copy and charge-free scan-to-mail is possible at all locations through a centralized printing system with exclusive access for students. Billing per page is charged directly to the student ID-card, which also serves as a debit card, train ticket and library card.

Free Wi-Fi is available for students on the three main campuses (Atrium House, Schloss and Burg).

Access to EBS IT infrastructure is possible from anywhere in the world and at any time. A private wide area network (WAN) between all five locations has been installed, which allows the concentration of IT resources such as servers at one data centre. For maximum availability, the data centre is located off site at a professional certified carrier. An integrated unified messaging system including telephony via internet (VoIP), fax, video and web conferencing was rolled out in 2010, allowing University staff to work from anywhere.



Online assessment and online thesis defence are regular practice at EBS and, on request, students abroad are able to sit exams online. We are continuously extending our online services.

Info terminals have been installed on all EBS campuses. They provide free-of-charge, high-speed Internet and learning platform access (e.g. lectures, events, etc.) to all EBS students and employees, anytime and anywhere.



Technology infrastructure including the off-site data centre, computer labs and printing solution are run, supervised, and maintained by our Service Desk and back office team. Their offices are mainly located near the computer labs in the Burg. They advise students, faculty members and administrative staff on IT-related issues and help with all IT problems that may occur.

## Web.Campus

EBS students and lecturers are supported in their work by a range of additional IT systems, which are maintained by an application services team. Web.Campus is an integrated platform supporting university management and administration. Web.Campus serves as a repository for all kinds of data concerning most University activities and, specifically, data relating to students, employees, programmes, lectures, examinations, evaluations, events, etc.

Major users and functions include:

- Admissions Office: online application for all programmes
- Students Office: stores and maintains student data; provides this data to other service departments or Chairs
- Examinations Office: administration of course and examination information; communication tool for student grades and the evaluation of lecturers
- Courses: online course descriptions, course materials, electronic submission of working papers, etc.
- Student community: personalized timetables, grade overviews, interaction with the Students Office, course selection, course evaluation
- Programme Management: coordination of the different programmes for the respective target groups, curriculum planning and learning evaluation
- Resource & Schedule Management: semester planning, scheduling of events, timetables and lecture room allocation
- Several other service departments (Career Services, International Programmes, Housing, etc.) make use of the data provided by Web.Campus

## myebs.de

myebs.de, the student Intranet at EBS Business School, is available to all enrolled students. Offering news, a wide range of forums and a continually growing database, myebs.de also provides students with the opportunity to select their university abroad and gives access to online library databases (see above).

Services at a glance:

- Personal email with global access and life-long ebs.edu address
- CV database/personal profile
- Personal calendar/lecture schedule
- Drop box to hand in homework
- Online access to e-library offerings
- Direct access to discount offers (e.g. computers, software licenses)
- Discussion/collaboration forums with course descriptions and reading materials
- Dedicated groups for intense collaboration with lectures and co-students
- Platform for interaction between coaches and coachees
- Various online community activities
- Newsletter/party planner
- Mobile notification upon request
- Career Centre with placement/job offerings from corporate partners

### Contact:

Direct your IT questions to the EBS IT Service Desk, +49 611 7102 2050,  
[support@ebs.edu](mailto:support@ebs.edu)



**myebs.de** is a Web 2.0 collaboration solution providing a communication platform among students, faculty, staff, alumni and coaches. Individual software solutions have also been integrated to provide additional features for the EBS community.

### E-learning

A major five-year project funded by the German Ministry for Research and Education was initiated in July 2010. The objective is the conceptualization of “Return on Education”, “Self-Regulated Learning”, and “Competence-based Education”. The project embraces not only academic curricula but also postgraduate professional education. All concepts will be evaluated with electronic-supported learning modules and the innovative results will be integrated into existing programmes on an ongoing basis.

## EBS Housing Office

No matter which campus location is going to be your permanent home at EBS, the Rheingau and Wiesbaden areas offer a lively real estate market with flats for all tastes. On its web pages, EBS Housing provides useful flat hunting tips for both campus locations.

The Housing web pages have been created to give you an overview of the area and the housing market, and they are very useful in searching for a flat before you arrive at EBS.

You may start with the Housing main page  
→ <http://www.ebs.edu/index.php?id=4422&L=0>

From here you can move on to websites which offer information on the individual locations Oestrich Winkel and Wiesbaden. Each website provides access to an affiliated search engine for student housing where we encourage local landlords and German students going abroad to post their flats for rent or sublet.

We offer a choice of options (free and paid services) for both locations to help you find suitable accommodation.

Links to online editions of local newspapers, Germany's online housing platforms, and various local agents who specialize in furnished and short-term accommodation can be found here along with contacts to Wiesbaden student dormitories.

If you come to visit in person, check out the "notice boards" on the Schloss campus in Oestrich-Winkel and in the Atrium House in Wiesbaden where local landlords post their flat offers as well.

Although the main objective of EBS Housing is to support our international students, we also assist handicapped EBS students or staff in their search for suitable accommodation. Please let the housing coordinator know if you require special assistance.



Part of Academic Services, the Housing Office is located in the "Nebengebäude" (annexe building) on the Schloss campus next to the International Office.



*Julia Bayer  
Housing Coordinator  
Phone + 49 611 7102 15 64  
Skype: EBS Housing  
[housing@ebs.edu](mailto:housing@ebs.edu)*

## Sports at EBS

### “The Sportressort”

The EBS Sportressort organizes all sporting activities at the University and offers a wide variety of sports and events. In weekly practice sessions each sport is coached or supervised by a Sportressort member who also puts together the EBS team for all inter-university sport tournaments. Additionally, he or she is also in charge of all jerseys and equipment. The weekly practice sessions can be attended by any EBS student.

Since 2002, the sports initiative has been offering rowing on the River Rhine. Practice sessions are organized by the Geisenheim Rowing Club. To attending rowing sessions, please contact the respective contact persons as only limited capacity is available.

Other sports may also be offered, on condition that a minimum number of students wish to take part and the Sportressort is able to take over the organization.

### Soccer, basketball and volleyball

Soccer, basketball and volleyball are the three main sports offered at EBS and are also the traditional sports for all inter-university sport competitions on our schedule. The EBS Soccer League in Oestrich takes place outdoors throughout winter and summer. Basketball and volleyball practice sessions take place indoors in Geisenheim. EBS is proud to have a cheerleading team that attends most of the sports competitions, competes in cheerleading contests and, of course, supports our teams.

### Sports cooperation

EBS Universität enjoys a strategic partnership with the Wiesbaden Tennis and Hockey Club (WTHC)

#### Contact:

Angelika Schön  
 Club Secretary  
 Wiesbaden Tennis and Hockey Club  
 Sportanlage Nerotal  
 65193 Wiesbaden  
 Phone + 49 611 520610  
 info@wthc.net  
 www.wthc.net







Wiesbadener  
Wohlfühlspirale

Living in Wiesbaden & the Rheingau

7

## Life in Wiesbaden

Wiesbaden, the capital of the federal state of Hesse, is a modern city located in the heart of the Rhine-Main region. A centre of business, cultural and social activity, Wiesbaden offers the ideal combination of leisure, education and employment opportunities, which makes it the perfect location for enjoying a high quality of life.

State Theatre, the Museum, the cultural centre “*Schlachthof*” or the *Kurhaus* offer a wide range of vibrant cultural activities the whole year round.

The many festivals and markets that take place throughout the year are a clear indication that Wiesbaden residents certainly know how to



Around 12,000 companies have their headquarters in Wiesbaden. Thanks mainly to the expansion of the private services sector, the city has developed into a competitive congress location with cutting-edge industries.

The city's many attractions are popular destinations, not only for tourists. Wiesbaden residents, too, enjoy taking a trip on Europe's only water-powered funicular railway to the top of the Neroberg. Other worthwhile destinations are the Zoological and Botanical Garden (*Fasanerie*), *Schloss Freudenberg* with its “Field of experience to develop the senses and thinking”, or the many thermal baths fed by the warm healing springs in Wiesbaden. The Hesse

celebrate. With the Wilhelm Street Festival, the largest street festival in Germany, the Rheingau Wine Festival, the Twinkling Star Christmas Market and the local market held twice a week at *Dern'sches Gelände*, the city throbs with life.



Wiesbaden is a city that offers something for everyone, for tourists and residents alike – simply a great place to live!

[www.wiesbaden.de](http://www.wiesbaden.de)

## Life in the Rheingau

Stretching along the banks of the River Rhine from Wiesbaden to Lorch is the picturesque Rheingau. An idyllic, densely wooded nature paradise with extensive hiking and walking trails, famous monasteries and fine wines.

Anyone who has once visited the Rheingau is reluctant to leave, and for a very good reason. With its small towns and villages the Rheingau offers rural tranquillity combined with excellent infrastructure and short, fast routes, for instance, to the nearby folksy city of Mainz or elegant Wiesbaden. It is part of the Rheingau-Taunus natural park and recreation area and also belongs to the Rhine-Main business hub.

However, the Rheingau is also – or to be more precise – is first and foremost a world famous wine-growing area. The Rheingau owes its geographical location to a whim of nature. For almost 1000km the River Rhine flows uninterrupted north, with one exception: At Wiesbaden it suddenly turns west at an angle of almost 90 degrees to circuit the Taunus Mountains and then, reaching Rudesheim after 35km, resumes its northerly direction. The sunny steep slopes of the vineyards, the mild winters, warm summers and autumn mists are ideal conditions for wine cultivation and grape ripening.

In the Rheingau you don't just enjoy wine, you experience it. Which is why the Rheingauer, as the locals residents are called, are passionate about and proud of their wine. This is something you feel during the very many wine festivals in the region, where wine is mostly the centre of attraction.

A genuine native Rheingauer knows the endless cycling and footpaths along the “*Rheingauer Riesling Route*”, which leads uphill and downhill through vineyards and woods along the Rhine. The many castles, chateaus, monasteries and churches, the countless beautiful half-timbered houses in the picturesque villages or the many wine tasting stands, where winegrowers are happy to serve their wine, offer plenty of opportunity for a short break along the way. Another good excuse to take a rest are the rustic restaurants and seasonal wine taverns where you can enjoy local specialities.



The Rheingau – life in its purest form.

[www.rheingau.de](http://www.rheingau.de)



Kontakt: Annika Stenzel  
Tel.: 0611/7245805  
Mobil: 0163/3908801  
E-Mail: [stenzel@wfs-wiesbaden.de](mailto:stenzel@wfs-wiesbaden.de)

Unser Wohnheim liegt im Wiesbadener Wohngebiet „Auf der Heide“ und bietet dort die perfekte Mischung aus idyllischer Lage und guter Anbindung an die Stadt.

Wir bieten sowohl möblierte als auch unmöblierte Einzelzimmer innerhalb von Wohngemeinschaften an.

Die Bewerbung um ein Zimmer kann ausschließlich über das Internet vorgenommen werden.

Weitere Infos finden Sie unter [www.wfs-wiesbaden.de](http://www.wfs-wiesbaden.de)

## Nature

Indulge in nature. Wiesbaden's city centre and the Rheingau offer expansive parks and green areas. Backed by the Taunus Mountains in the north and with the River Rhine to the south, the Rheingau winds its way through valleys and hills offering views of the River Rhine and the entire Rhine valley. The southern foothills of the Taunus Mountains protect the region against cold winds and storms.

Whether in the recreation area "*Unter den Eichen*", the Kurpark, Biebrich Palace Park or on the Neroberg, in Wiesbaden you will always find a quiet green space to relax, enjoy nature and forget hectic city life for a few moments.



### Further information at:

<http://www.citysports.de/Wiesbaden/sport-fitness-uebersicht.htm>

## Sport

Each year numerous events attract the sporting elite and enthusiastic spectators to Wiesbaden and the Rheingau. The Ironman Germany, for instance, or the Whitsun International Horse Show in Biebrich Palace Park, where horse lovers and the international elite of equestrian sport gather each year for four days of exciting sport, entertaining shows and a wide range of attractions.

And for the sport-minded, there are no limits: In summer take a cool bath in one of the numerous swimming pools, go ice skating at the Henkel Skating Rink in winter, relax in spa facilities or do endurance sport along the many cycling and nature trails.

If you're lacking motivation, just follow the crowd. At "Tal Total", the car-free field day held once a year for cyclists and inline skaters, the main road along the River Rhine is traffic-free for 60km. Hundreds of enthusiastic cyclists, skaters and spectators gather for this event each year.



## Festivals

You might be inclined to think Wiesbaden residents never stop celebrating. In February/March carnival-goers meet for the big Mardi Gras parade. Taking place between the May Theatre Festival and the Andreas Market are a number of other festivals. The culmination is not, as one might suppose, the Twinkling Star Christmas Market, but the New Year's Eve fireworks display on the Bowling Green, marking the arrival of the New Year. An annual cycle of festivities, where locals mix with guests in peaceful celebrations. And not just in Wiesbaden, but in the Rheingau too. The Rheingauer raise their glasses at countless wine festivals, such as the Sekt Festival in Eltville or the Strawberry Festival in Erbach, where for a change the centre of attraction is not wine but strawberry punch.



Further information at:  
<https://www.wiesbaden.de/leben-in-wiesbaden/freizeit/veranstaltungskalender>  
<http://www.rheingau.de/veranstaltungen>

## Leisure & Culture

Leisure and culture in Wiesbaden and the Rheingau are the perfect mix. In addition to the Hesse State Theatre, several other theatres enrich cultural life in the Hesse state capital. The Pariser Hoftheater, the Thalhaus, the Wallhalla Studio, the Velvets Theater, the Künstlerhaus<sup>43</sup> and the Sommertheater Wiesbaden have lasting impact on the city's theatrical landscape. The Liliencarree and the Luisenforum are popular shopping centres, and the pedestrian area boasts a wide array of well-known shops. Party-goers can dance into the early hours of the morning in discotheques such as the Park Cafe or go to concerts at the Schlachthof.

Very special are the wine tasting events in Kloster Eberbach in the Rheingau and the Rheingau Music Festival. Although the focus of the festival is on classical music, in recent years jazz, cabaret and literary wine tasting have become a firm part of the programme. And each year the festival highlights a particular theme. Pleasure boat cruises on the River Rhine with its many castles, a visit to the Niederwalddenkmal monument or cabaret in the Brentanoscheune, the Rheingau offers a whole range of leisure opportunities.



Further information at:  
<http://www.wiesbaden.de/tourismus/themen-touren/kunst-kultur/index.php?p=3,2,3>  
<http://www.rheingau.de/sehenswertes/sehenswuerdigkeiten>

## Food & Drink

Eating and drinking in Wiesbaden is much more influenced by wine and sparkling wine than in any other German city. The nearby Rheingau and its wine-growing culture is a source of inspiration for the countless restaurants in the region.

From Michelin star cuisine to traditional regional dishes, Wiesbaden's wide variety of places to eat will satisfy whatever your appetite calls for. Stroll through the Goldgasse in the city's historical district where you can choose between tapas bars, cafés and bistros, good old-fashioned restaurants, wine bars and italian pizzerias, or go for something slightly more stylish in the Taunusstraße. Wine is, of course, predominant in the Rheingau, and with 1001 vineyards the search for a beer tavern might just take that little bit longer. The seasonal wine taverns generally have oversized tables, with no such thing as sitting at your "own table". Whoever walks in, takes a seat, and nobody stays a stranger for long. Guests start chatting with each other straight away, enjoying good food and excellent wine in warm surroundings and friendly company.



Further information at:

<http://stadtmagazin.prinz.de/wiesbaden>

<http://wiesbaden.eins.de/>

<http://www.rheingau.de/gastronomie>

## Semester Ticket

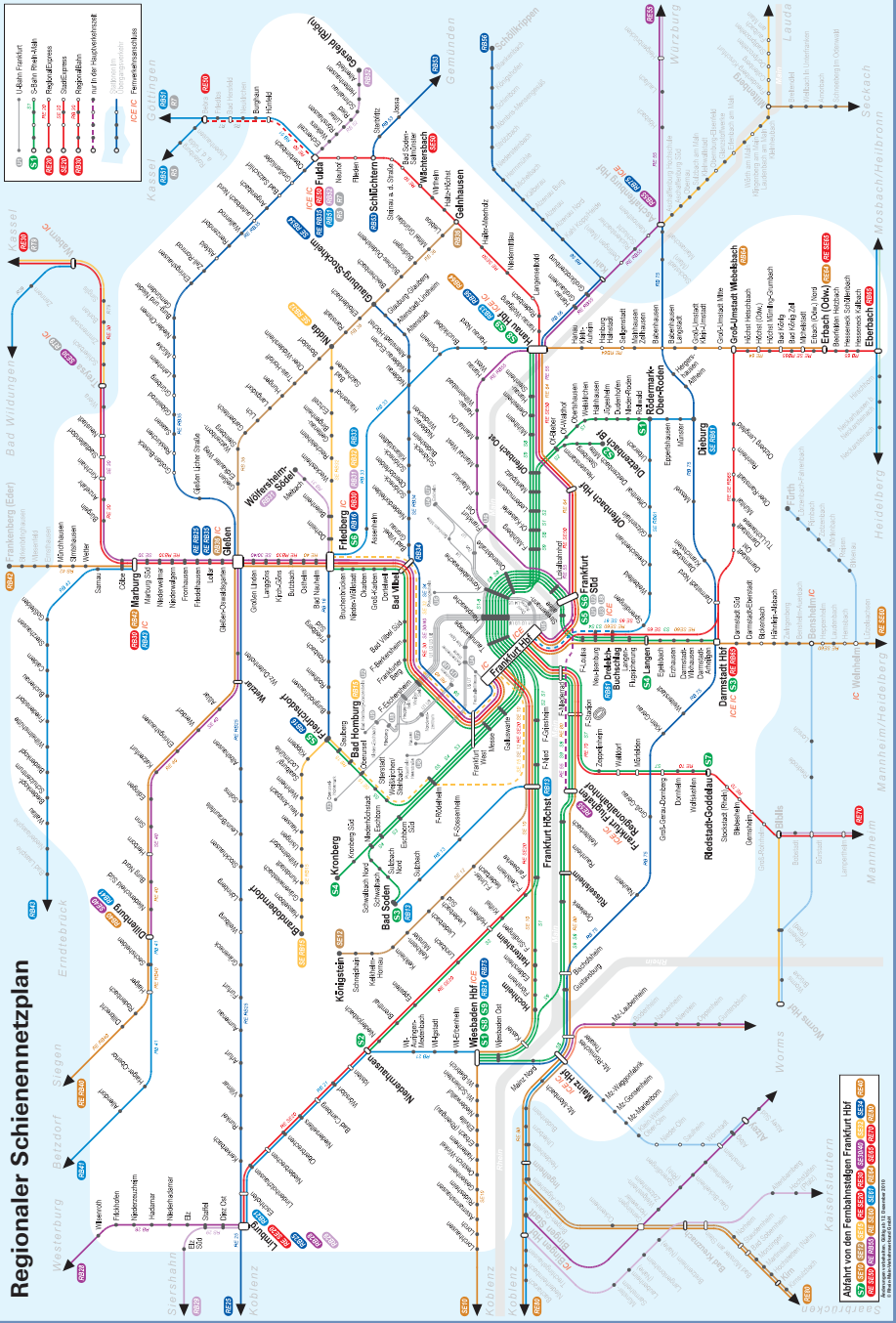
All students at EBS automatically register for a semester ticket. The ticket allows students to use all public transport offered by the *Rhein-Main-Verkehrsbund RMV* ([www.rmv.de](http://www.rmv.de)) including city and regional buses, the underground, trams, and selected regional trains. The ticket costs 110 euros per semester at EBS Business School and 73.50 euros per trimester at EBS Law School.

**RMV Transport Map** →



# Rhein-Main-Verkehrsverbund

## Regionaler Schienennetzplan



**EMV Tarifzonen**

- 01: Kassel
- 02: Fulda
- 03: Schweinfurt
- 04: Würzburg
- 05: Kassel
- 06: Fulda
- 07: Schweinfurt
- 08: Würzburg
- 09: Kassel
- 10: Fulda
- 11: Schweinfurt
- 12: Würzburg

**EMV Tarifzonen**

- 13: Kassel
- 14: Fulda
- 15: Schweinfurt
- 16: Würzburg
- 17: Kassel
- 18: Fulda
- 19: Schweinfurt
- 20: Würzburg
- 21: Kassel
- 22: Fulda
- 23: Schweinfurt
- 24: Würzburg

**Abfahrtsort des Eisenbahnverkehrsverbundes**

- 01: Kassel
- 02: Fulda
- 03: Schweinfurt
- 04: Würzburg
- 05: Kassel
- 06: Fulda
- 07: Schweinfurt
- 08: Würzburg
- 09: Kassel
- 10: Fulda
- 11: Schweinfurt
- 12: Würzburg

© 2014 Eisenbahn-Main-Verkehrsverbund

# NUTZEN SIE IHR

# ERFOLGSMAGAZIN!

Das **Karriere**magazin für den erfolgreichen Berufseinstieg bei den **Top-Arbeitgebern** Deutschlands und international für **Studenten, Praktikanten, Diplomanden, Absolventen, Young Professionals und High Potentials** mit Informationen zu

- ▬ **Karriereplanung** → Ihre Chancen
- ▬ **Berufsfeldern** → Ihre Möglichkeiten
- ▬ **Jobsuche** → per Internet



**KARRIERESTART**  
**PROFESSIONALS**  
**WIRTSCHAFTSWISSENSCHAFTEN**

DAS KARRIEREMAGAZIN FÜR DEN ERFOLGREICHEN BERUFSEINSTIEG  
BEI DEN TOP-ARBEITGEBERN, ABSOLVENTEN UND INTERNATIONAL  
FÜR STUDENTEN, PRAKTIKANTEN, ABSOLVENTEN,  
YOUNG PROFESSIONALS, HIGH-POTENTIALS, BERUFSEINGANGS-  
SCHÄFTLICHEN STUDIENGÄNGE UND MANAGERMANAGEMENT

1526 1882-2826 Sommersemester 2013  
Herbert-Weinmann-Institut für Wirtschaftswissenschaftliche Veröffentlichungen

Ich bin interessiert und bitte um Zusendung eines kostenfreien Exemplars [\*]  
**KARRIERESTART YOUNG PROFESSIONALS**  
**WIRTSCHAFTSWISSENSCHAFTEN**

Name \_\_\_\_\_

Straße \_\_\_\_\_

PLZ/Ort \_\_\_\_\_

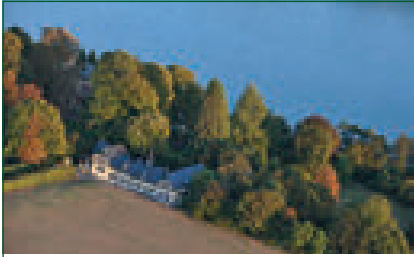
Telefon \_\_\_\_\_

Telefax \_\_\_\_\_

[\*] solange Vorrat reicht

**ALPHA** Informationsgesellschaft mbH  
Herrn Buecker  
Finkenstraße 10 • 68623 Lampertheim  
Telefon 0 62 06 93 94 42 • Telefax 0 62 06 93 94 00  
E-Mail [sascha.bueckermann@alphapublic.de](mailto:sascha.bueckermann@alphapublic.de)





## Exklusive Ferienwohnungen im Rheingau

Barbara Jung . Diplom Betriebswirtin  
Villa Belmonte . Wallufer Straße 61 . 65343 Eltville  
Tel.: ++49 (0) 6123 605403  
Fax: ++49 (0) 6123 900490  
Mobil: ++49 (0) 174 3168866  
E-Mail: barbara.jung@rheinberg-belmonte.de

[www.rheinberg-belmonte.de](http://www.rheinberg-belmonte.de)



In der Region - für die Region.

**Unsere Kunden...**  
**...wollen hoch hinaus!**

[www.rheingauer-volksbank.de](http://www.rheingauer-volksbank.de)

**RHEINGAUER**  
**VOLKSBANK**   
nah | direkt | persönlich



Kontakt: Annika Stenzel  
Tel.: 0611/7245805  
Mobil: 0163/3908801  
E-Mail: stenzel@wfs-wiesbaden.de

Unser Wohnheim liegt im Wiesbadener Wohngebiet „Auf der Heide“ und bietet dort die perfekte Mischung aus idyllischer Lage und guter Anbindung an die Stadt.

Wir bieten sowohl möblierte als auch unmöblierte Einzelzimmer innerhalb von Wohngemeinschaften an.

Die Bewerbung um ein Zimmer kann ausschließlich über das Internet vorgenommen werden.

Weitere Infos finden Sie unter [www.wfs-wiesbaden.de](http://www.wfs-wiesbaden.de)



inspire

International Students at EBS

8

## International Programmes Office

**The International Programmes Office warmly welcomes you to EBS!**

Our office is in charge of all international exchange activities. Therefore one of our main responsibilities consists of assisting international exchange students in all matters related to their studies at EBS. Of course, international degree-seeking students are always welcome to contact us for assistance as well.

Postal address Business School:  
EBS Universität für Wirtschaft und Recht  
International Programmes Office  
Rheingaustrasse 1  
65375 Oestrich-Winkel  
Germany  
international@ebs.edu

Office location:  
Schloss Campus  
Annexe Building  
2nd floor

Opening hours:  
Monday to Thursday: 9.00am – 12.00 noon and  
1.00pm – 5.00pm  
Friday: 9.00am – 12.00 noon and  
1.00pm – 3.00pm

Postal address Law School:  
EBS Universität für Wirtschaft und Recht  
International Programmes Office  
Gustav-Stresemann-Ring 3  
65189 Wiesbaden  
Germany  
sina.thonipara@ebs.edu

Office location:  
Atrium House Wiesbaden  
1st floor

Opening hours:  
Monday to Friday: 9.00am – 12.00 noon

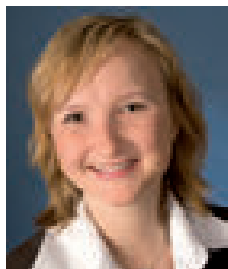
Please note that the admissions process for international exchange students and international degree-seeking students differs. Exchange students should apply via the International Programmes Office. The process is outlined below. Degree-seeking students should apply via the Admissions Office. Information on the process can be found on our website [www.ebs.edu](http://www.ebs.edu)



Should you need advice or support before, during or after your stay at EBS, please do not hesitate to contact us at any time!



*Dr Gerda Niemann  
Associate Dean  
Academic Services  
Student Advisory Service  
Phone +49 611 7102 1579  
gerda.niemann@ebs.edu*



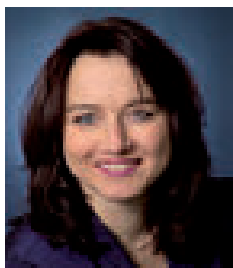
*Alexandra Dierking  
International Programmes  
Coordinator USA,  
Canada, Australia,  
New Zealand and Eastern  
Europe  
Phone +49 611 7102 1575  
alexandra.dierking@ebs.edu*



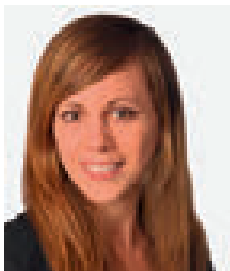
*Philippe Chatillon  
International Programmes  
Coordinator Northern and  
Western Europe, Ireland UK,  
Latin America,  
Erasmus Coordinator  
Phone +49 611 7102 1565  
philippe.chatillon@ebs.edu*



*Anne-Katrin Kriesch  
International Programmes  
Coordinator Asia, Africa and  
Scandinavia  
Phone +49 611 7102 1576  
anne-katrin.kriesch@ebs.edu*



*Daniela Herz-Gossler  
Team Leader  
International Programmes  
Non-European MSc Dual  
Degree Programmes;  
Allocation Process  
Bachelor, Master and  
Dual Degree  
Phone +49 611 7102 1573  
daniela.herz-gossler@  
ebs.edu*



*Ina Schnakenberg  
International Students  
Coordinator  
Phone + 49 611 7102 1516  
ina.schnakenberg@ebs.edu*



*Sina Thonipara  
International Programmes  
Coordinator Law School  
Phone + 49 611 7102 1568  
sina.thonipara@ebs.edu*



*Julia Bayer  
Housing Coordinator  
Phone + 49 611 7102 15 64  
housing@ebs.edu*

# Academic Calendar Business School

## Fall Term 2013

### 16 – 28 August 2013:

Expected arrival on campus for exchange students

### 20 – 28 August 2013:

#### ***Study Skills in German: Intensive German Language Course***

- Taught at different levels
- Participation is free of charge for international students and highly recommended
- Please register online in advance when applying for your exchange semester or via email to [international@ebs.edu](mailto:international@ebs.edu)

### 29 August – 30 August 2013:

#### ***Induction days***

- **Mandatory** for all **exchange** students
- International degree students are welcome to join in certain activities (please register at [international@ebs.edu](mailto:international@ebs.edu))

### 2 September 2013:

Lectures begin

### 20 December 2013:

End of lectures and exams\*

### Mid-February 2014:

Transcript of record is sent to home university

## Spring Term 2014

### 2 – 8 January 2014 (tbc):

Expected arrival on campus for exchange students

### 3 – 9 January 2014 (tbc):

#### ***Study Skills in German: Intensive German Language Course***

- Taught at different levels
- Participation is free of charge for international students and highly recommended
- Please register online in advance when applying for your exchange semester or via email to [international@ebs.edu](mailto:international@ebs.edu)

### 9 – 10 January 2014:

#### ***Induction days***

- **Mandatory** for all **exchange** students
- International degree students are welcome to join (please register at [international@ebs.edu](mailto:international@ebs.edu))

### 13 January 2014 (tbc):

Lectures begin

### Early May 2014 (tbc):

End of lectures and exams for Master and MBA courses \*

### Late May 2014 (tbc):

End of lectures and exams for Bachelor courses\*

### July 2014:

Transcript of record is sent to home university

\* Students are expected to stay on campus until their last exam has been taken. It is not possible to take exams at the home university instead.

## Academic Calender Law School

### Fall Term 2013

#### **Latest by 18 September 2013:**

Expected arrival on campus for Law exchange students

#### **19 – 20 September 2013:**

##### **Induction days**

- **Mandatory** for all Law exchange students

#### **23 September 2013:**

Lectures begin

#### **15 December 2013:**

End of lectures and exams\*

#### **Mid-February 2014:**

Transcript of record is sent to home university

**Please note: EBS Law School offers the EBS Law Term programme “Transnational Commercial Law” taught in English in the Fall term only (September – December)!**

*\* Students are expected to stay on campus until their last exam has been taken. It is not possible to take exams at the home university instead.*



# Admissions Process for Exchange Students

## Eligibility for student exchange to EBS

Please note: The process outlined here is for exchange students only. International degree-seeking students are requested to refer to [www.ebs.edu](http://www.ebs.edu) for admission information.

Prospective exchange students are required to

- be registered students at one of our partner universities
- be officially nominated by the home university
- be in good academic standing
- conform to EBS minimum English language requirements
- Law exchange students should have completed at least one and a half years of a full-time undergraduate law programme or at least one year at a graduate law school by the time the programme begins.

## The application process for exchange students wishing to attend EBS consists of 3 steps:

**Step 1:** The exchange coordinator of the home university nominates exchange students through an online nomination system (details will be sent to all exchange coordinators in due time).

**Step 2:** Nominated exchange students will receive an email from the International Programmes Office with details on the online application procedure.

**Step 3:** After completing the online application, students are required to upload the following supporting documents into the application system:

1. Current CV or resume
2. One passport-sized photograph
3. A copy of all university degrees/grade transcripts from the last 2 years
4. Proof of health insurance or copy of European Health Insurance Card valid for the entire stay at EBS (please refer to page 120 for important information on health insurance!)
5. Document “Declaration of Accession” to the EBS student body (available in the download section of online application system)
6. For non-native speakers of English: proof of English language skills
- 6.a Language requirements for Business exchange:

	Undergraduate level	Graduate level	Master Dual Degree
TOEFL	80 ibt	90 ibt	100 ibt
IELTS	6.0	6.5	7.0
TOEIC	660	721	851
ESOL	FCE grade A or B	CAE grade A, B, C	CAE grade A CPE BEC 3, Higher (Business English Certificate)



## 6.b Language requirements for Law exchange:

	<b>Law</b>
TOEFL	90
IELTS	6.5
TOEIC	721
ESOL	CAE grade A, B, C

7. A copy of ID document:  
 For EU students: national ID card;  
 For non-EU students:  
 passport (photo and data page; needs to be  
 valid for the entire stay in Germany!)
8. For Business Master Dual Degree students  
 only:  
 a valid GMAT score.



Complete applications must be submitted online before the following application deadlines:

- For Fall Term:     **1 May**  
 For Spring Term:   **1 October**

# General Academic Matters for Exchange Students

## Attendance

Whilst we want you to get the most out of your stay, travelling is not an excuse to miss classes or exams! If you miss too many classes, you will not be allowed to attend the exam and you will receive a fail grade for a course.

If you miss a class due to time clashes with other courses once or twice during the semester (for max. 90 minutes each time) this is usually still ok. But make sure to talk to your lecturer IN ADVANCE and let him/her know when you will be missing. Together you will be able to work out how to make up for the content you will miss (e.g. by attending another group, extra reading or exercises, etc). If two courses clash three times or more you will have to try to select a different group to see if the schedule works better! If this does still does not work, you will have to select a different course combination.

## Important for exams

- Bring your EBS student ID card to every exam.
- Write down your EBS student ID number on ALL exam papers.
- Sign attendance list on request.
- Do NOT write your name, “Tauschie”, “Erasmus” or “exchange student” on the exam papers. Exams are written anonymously at EBS.
- Do not use pencils or other erasable pens for writing (exception: graphs!).
- You may use a dictionary, either your language/German or your language/English without any hand-written notes.

- You may write the answers in English
- If previously specified, you may use a non-programmable calculator.
- You are not allowed to use mobile phones during any exam, not even as a “watch”!
- Results will usually be published by the beginning of February (fall term modules/courses) and by the end of June (spring term modules/courses). These timings cannot be changed. Please note: Other timings apply for resits!

## Doctor’s note

If you are ill and unable to sit an exam you must hand in a doctor’s note at the Examinations Office within three working days, including the day of the exam (Saturday and Sunday do not count as working days). The note may be sent by fax/email in advance, but the original note still needs to be submitted to the Examinations Office.

Sick notes are only accepted if they are issued by an EBS approved doctor! The following physicians are EBS approved:

**Dr R. Terhedebrügge**

**Dr E. Schäfer**

Kiliansring 5

65343 Eltville

Phone +49 6123 21 00

[www.diagnostikpraxis.de](http://www.diagnostikpraxis.de)

**Cornel Bardenhewer**

Schwalbacher Str. 9

65343 Eltville

Phone +49 6123 70 54 64

**Dr med. Rolf Hartmann**

**Dr med. C. Wolf**

Kiliansring 7

65343 Eltville

Phone +49 6123 99 96 88

**Dr med. Elke Weber**

(General Practitioner)

Rheinstraße 31

65185 Wiesbaden

Phone +49 611 34 13 28 67

**Dr med. Achim Wallau**

(General Practitioner)

Rheinstraße 31

65185 Wiesbaden

Phone +49 611 34 13 28 67

If you happen to fall ill while travelling and are unable to see an EBS approved doctor, please provide a sick note from a public health doctor (**Amtsarzt**).



**Attention:**

Beware of plagiarism when writing research papers! Failure to cite used sources will lead to a fail grade for your work. The guidelines and standards for writing papers at EBS are available for download in our student Intranet:

*myEBS* → *University* → *Service Portal* → *Wissenschaftliche Arbeiten: EBS Guidelines zum wissenschaftlichen Arbeiten / Guidelines for Writing Research Assignments.*

If in doubt, please ask your supervisor for help BEFORE submitting your work!

**Semester Report / Transcript of Records**

Credits are awarded only when the course and all required examinations have been successfully completed. You will receive a scanned “semester report” from EBS Examinations Office. Hard copies of your semester report will be sent to your home university on request only (deadline will be communicated in due time).

# Academic Matters for Exchange Students at EBS Business School

## Courses at EBS Business School

EBS Bachelor's and Master's programmes are taught in so-called modules. Modules are groups of courses which are linked together by a single exam and which can only be registered for as a whole.

Example: Module M-FIN2-002 "Finance" consists of the two courses "L-FIN2-002 Corporate Finance and Valuation" and "L-FIN2-003 Real Estate Fundamentals & Finance". It is not possible to attend only L-FIN2-002 or only L-FIN2-003. Students have to register for the entire module (here = 2 courses).

An overall module exam is usually taken at the end of the semester and includes elements from all the courses. **However, only one overall mark is given.**

At the end of the semester, the module will appear on the transcript of record as ONE module with ONE module grade. It is not possible to split this grade into grades for each single course.

Certain modules are structured in such a way that it is not possible to take the whole module during one semester. In this case, students can take the course on its own – these courses are accordingly labelled 'stand-alone courses'. For each stand-alone course a separate exam has to be taken.

An example from our course list:

Module No.	Course No.	Course Title	Lecturer	ECTS	Module	Language	Elegibility
M-FIN2-002	L-FIN2-002	Corporate Finance and Valuation	Mager	2	Finance	English	module only
	L-FIN2-003	Real Estate Fundamentals & Finance	Rottke	1	Finance	English	

## Course Registration

- Exchange students are free to select which courses they want to attend and register themselves for these courses.
- Degree-seeking students follow a pre-determined programme and are registered for courses by Resource & Schedule Management.

Each student will receive individual information on course selection before the beginning of the semester.

The full course load for one semester at EBS is 30 ECTS credits. We recommend exchange students take a minimum of 20 ECTS and a maximum of 30 ECTS + one language course. Students are strongly recommended to confirm course load requirements with their home university BEFORE registering for classes at EBS.

Course registration takes place online before the beginning of the semester. All necessary information will be sent to students via email **after admission.**



**Please note:** Course selection rules and processes differ for exchange students and degree-seeking students!

EBS course timetables are not as regular as most students are probably used to. Some courses last for a whole semester, some for several weeks, but some shorter courses last for a few sessions only, often over an intensive 2 or 3 day block. **Each student is responsible for checking for clashes week by week during registration!**

When you register for a course/module you are automatically registered for the exam.

Courses must be deregistered from before the THIRD session or the first assignment/exam. If you fail to deregister for a course in time, a fail grade will appear on your transcript of record and cannot be removed.

Please register only for courses that you are interested in and which your home university accepts for credit transfer. Also, check the number of credits you need to complete with your university before registering. EBS is not responsible for your credit transfer to your home university.

Contact:



*Ute Michler  
Manager Resource & Schedule Management  
Phone +49 611 7102 1757  
ute.michler@ebs.edu*

### **Exams, Papers, Groupwork**

Many of your classes will involve group work and a presentation. Some lecturers will assign you to a group. Within a group you are expected to contribute your fair share of work just as your fellow group members. For full-time EBS students group work is very important as each grade contributes to their overall grade. Thus, be prepared that your German fellow students take their group work VERY seriously.

### **Important for exams at EBS Business School**

- When you register for a course/module, you will AUTOMATICALLY be registered for the exam of this course/module.
- Examination dates and times can be found on Campusnet under the link "My Exams". You will receive a reminder email to your ebs.edu mail account one week prior to the exam. Therefore, regularly check your EBS mail account and/or set up a working email forward rule. Please check regularly for changes!

## Resits

You can only retake an exam if you fail the whole module/course. You cannot retake an exam to improve your grade. If you do not pass an exam, you may review your exam paper once it reaches the Examinations Office or contact your lecturer for feedback.

If you fail an exam, please check the possibility of a resit. In general, students are required to repeat exams at EBS.

EBS Examinations Office will inform you about the rules and deadlines for repetition exams, if applicable.

If you are struggling with a course or you are worried about a subject, please contact the responsible assistants in the department in good time before the exam.

## Contact



*Martin Vieler*  
*Examination Manager MSc,*  
*MBA and non-degree incoming*  
*students*  
*Phone +49 611 7102 1586*  
*[martin.vieler@ebs.edu](mailto:martin.vieler@ebs.edu)*

In the case of any repeat exam it is up to you to contact EBS Examinations Office and ask for a new semester report after the results of your repeat exam have been published. Neither your home university nor you will “automatically” be provided with an updated document.

## EBS Grading Table

<i>EBS Quotient</i>	<i>German</i>	<i>ECTS</i>	<i>ECTS</i>	
<i>from ...</i>	<i>to</i>	<i>Grade</i>	<i>Grade</i>	
			<i>Description</i>	
0.981	1.000	1	<b>A</b>	<b>Excellent</b>
0.965	0.980	1.1		
0.949	0.964	1.2		
0.933	0.948	1.3		
0.917	0.932	1.4		
0.901	0.916	1.5	<b>B</b>	<b>Very good</b>
0.885	0.900	1.6		
0.869	0.884	1.7		
0.853	0.868	1.8		
0.837	0.852	1.9		
0.821	0.836	2	<b>C</b>	<b>Good</b>
0.805	0.820	2.1		
0.789	0.804	2.2		
0.773	0.788	2.3		
0.757	0.772	2.4		
0.741	0.756	2.5	<b>D</b>	<b>Satisfactory</b>
0.725	0.740	2.6		
0.709	0.724	2.7		
0.693	0.708	2.8		
0.677	0.692	2.9		
0.661	0.676	3	<b>E</b>	<b>Sufficient</b>
0.645	0.660	3.1		
0.629	0.644	3.2		
0.613	0.628	3.3		
0.597	0.612	3.4		
0.581	0.596	3.5	<b>F</b>	<b>Fail</b>
0.565	0.580	3.6		
0.549	0.564	3.7		
0.533	0.548	3.8		
0.517	0.532	3.9		
0.500	0.516	4		
<b>0.000</b>	<b>0.499</b>	<b>5</b>		

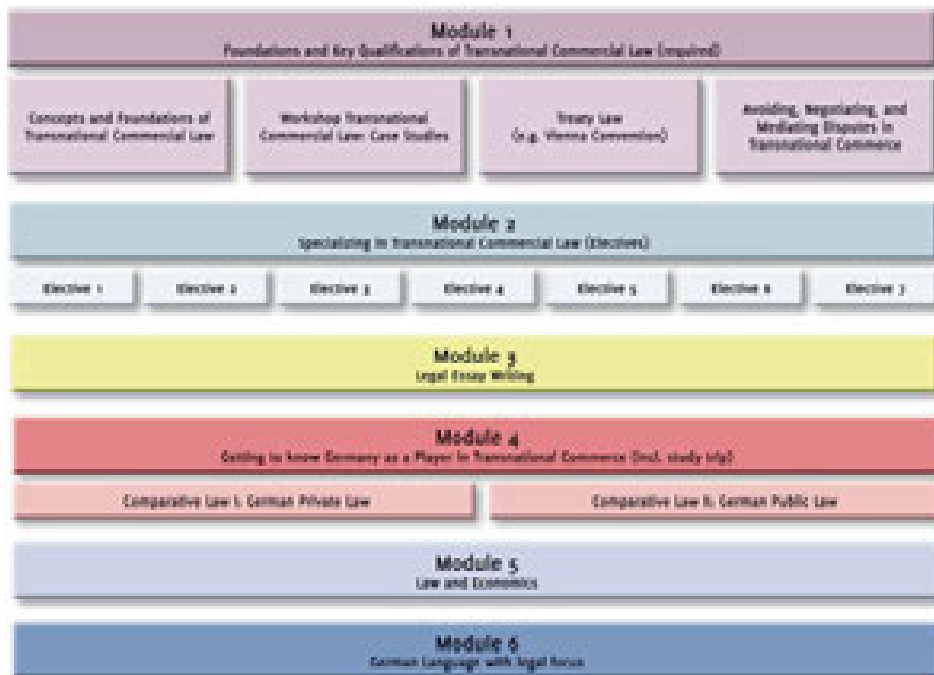
# Academic Matters for Exchange Students at EBS Law School

## Courses at EBS Law School

EBS Law School offers a special programme for its international students: EBS Law Term “Transnational Commercial Law”. Courses on this programme are taught by top-level law professors and legal practitioners, all working with a particular focus on Transnational Commercial Law. There are six modules students can choose from. Module 1 is compulsory for all students attending EBS Law Term Transnational Commercial Law, while modules 2-6 are elective modules.

We require students to take a minimum of 16 ECTS during EBS Law Term. Students are strongly advised to confirm course load requirements with their home university before registering for classes at EBS Law School. EBS is not responsible for the credit transfer to your home university.

You will find a detailed description of the courses on this website:  
[www.ebs.edu/lawterm](http://www.ebs.edu/lawterm).



## Housing Office

EBS Housing Office assists international students to find suitable accommodation near campus and helps to overcome typical German obstacles when renting a flat: In Germany flats are usually rented “empty”, with a fitted kitchen at best, for longer periods than one or two semesters and by landlords who speak German only. All business exchange students will be contacted by the Housing Office as soon as they are registered. For students who are taking part in an exchange with EBS Law School in Wiesbaden, please contact first your exchange coordinator, Sina Thonipara [sina.thonipara@ebs.edu](mailto:sina.thonipara@ebs.edu), to learn about your accommodation process. International students on full-time programmes can contact Housing for assistance but please be aware that Housing is not an automatic part of your Study Agreement. Since we do not offer on-campus accommodation, our international students live in the surrounding towns and villages, renting apartments or sharing flats. In terms of dormitories, Housing is only able to offer very limited dorm space off-campus in Oestrich, whereas in Wiesbaden students can rent into three privately managed student dorms.

Our Housing websites provide many online services (free and chargeable) for different types of accommodation. Quite often you will be able to book yourself because there are links to a number of bilingual sites, you can however always ask Housing for assistance during the accommodation process.

You may start with the Housing main page for general information: <http://www.ebs.edu/index.php?id=4422&L=0>

From here you can proceed to websites that offer specialized information on Oestrich Winkel and Wiesbaden. FAQs on living, renting and

driving in Germany can be found on sub sites. Each website provides access to an affiliated search engine for student housing where we encourage local landlords and EBS students going abroad to post their offers. If this is your first time at EBS you may choose a flat or room offered to you by our private partners. All places have been inspected by Housing, offer contracts in English, often have all-inclusive prices and short-term rental periods. You can choose from single apartments, flat shares and student houses all furnished, equipped and located mostly in the area of Oestrich.

All these options will be offered to you during “Flat Hunt”. The Hunt is an online event two months before arrival where Housing uploads descriptions of all offers along with available dorm space to be chosen on the basis of “first come first served”. Students wishing to look for accommodation themselves should consult the Housing websites for information and further links.



Part of Academic Services, the Housing Office is located in the “*Nebengebäude*” (annexe building) on the Schloss campus next to the International Office.

### Contact



*Julia Bayer*  
Housing Coordinator  
Phone + 49 611 7102 15 64  
Skype: EBS Housing  
[housing@ebs.edu](mailto:housing@ebs.edu)



## Campus Facilities

### Cafeteria Business School

The EBS cafeteria offers breakfast and lunch.

Opening times:

Monday – Friday, 7:30am – 2pm

Lunch costs from 3.75 – 3.95 euros

A variety of snacks, salads, sweets and drinks are also available.

### Launderette Business School

Located on the Burg campus, through the courtyard and the first door to the left of the archway, is a small launderette (two washing machines and two dryers). You will need to bring your own washing detergent. Please note that the washing machines operate on euro coins. A washing cycle costs 3 euros and a drying cycle 2 euros.

### Saftbar Law School

Law exchange students on the Wiesbaden campus can buy snacks, salads, sweets and drinks at the Saftbar. An average meal costs between 3 and 4.50 euros. You can find launderettes nearby, e.g. Eco Express, Adelheidstr. 51 in 65185 Wiesbaden.

## Visa and Residence Permit

International students (non-EU nationals) need to undergo the following procedures:

1. Apply for a visa (at least 10 weeks before semester start)
2. Register accommodation with local authorities (within 10 days after arrival)
3. Apply for residence permit (before visa expires).

All international students are required to enquire in advance whether they need a visa to study in Germany or not! Please contact the nearest German embassy or consulate in your

home country for clarification! EBS International Programmes team can also offer general advice.

If a visa is required, students should calculate a minimum of 10 weeks for the visa to be issued once the complete application has been handed in to the German embassy or consulate.

The German immigration law classifies all visitors to Germany in 3 categories, depending on their country of origin:

### 1. Visa-waiver countries

Citizens of these countries can enter Germany without a visa and are allowed to stay for 90 days. After arrival, students need to register in Germany and apply for a residence permit. We will help students with these two steps during the induction days.

### 2. Visa-Waiver only for TOURISTS

Citizens of these countries are allowed to enter Germany without a visa, but only for a maximum stay of 90 days as a tourist. After this period they MUST leave the country. International students of course need to stay longer. This is only possible if you apply for a visa BEFORE entering Germany. The visa is valid for 90 days and gives you the possibility to register in Germany and apply for a residence permit after your arrival. We will help you with that during your first week at EBS. Once you have the residence permit, you are allowed to stay until the end of your studies at EBS.

### 3. Unconditional visa requirement

Citizens of many countries ALWAYS need a visa to enter Germany! The visa will be valid for 90 days. After your arrival you have to register in Germany and apply for a residence permit. We will help you with that during your first week at EBS. Once you have the residence permit, you are allowed to stay until the end of your studies at EBS.



To find out which regulations apply to your nationality, please visit the following website:

[http://www.auswaertiges-amt.de/EN/EinreiseUndAufenthalt/Visabestimmungen\\_node.html](http://www.auswaertiges-amt.de/EN/EinreiseUndAufenthalt/Visabestimmungen_node.html)

→ Visa requirements – list of countries

Please note: A visa is usually issued for 90 days, but since 2012 exchange students (also students from visa-waiver countries) can try to apply for a visa for the length of their entire stay in Germany (1 or 2 semesters).

In the past, some students have contacted EBS because the embassy/consulate informed them that EBS could call the immigration office to speed up the visa issuing process. Please note that although EBS has tried this in the past, the Rheingau-Taunus-Kreis immigration office does NOT speed up any visa issuing process!

We have also noted that some embassies around the world are comparatively lax in controlling visa documents. The local immigration office however checks everything extremely thoroughly!



The following documents **must be submitted** (even if the embassy does not want them initially) so that the immigration office in Germany can approve your application:

- EBS letter of acceptance (in German)
- Rental contract for accommodation or letter that EBS will assist you in your search for accommodation
- Proof of sufficient health insurance in Germany (see below)
- Proof of financial support (see below).

If any of these documents are missing or are unacceptable to the immigration office, they will ask you to supply more/different documents. **This will slow down your application considerably!**

### Proof of health insurance

The immigration office accepts only very few health insurance plans. In general it is highly recommended that ALL students purchase full German health coverage. Also, from Spring 2014 ALL students staying at EBS for more than one semester **MUST** submit a German public insurance plan. The European Health Insurance Card is still accepted. All public German insurance providers offer the same, comprehensive services for the same price (ca. 78 euros per month). Barmer GEK, for example, offers a very convenient email application service in English:

- **Barmer:** please contact Mr Andre Böhm at Barmer Insurance: [andre.boehm@barmer-gek.de](mailto:andre.boehm@barmer-gek.de) or +49 611 3571 51 6001.
- Other public insurance providers in our area include TK ([www.tk.de](http://www.tk.de)), AOK ([www.aok.de](http://www.aok.de)) or DAK ([www.dak.de](http://www.dak.de)).

If you are only staying at EBS for one semester and don't want to purchase full German medical insurance coverage, please note the following:

- Other plans may be cheaper but they provide less comprehensive coverage and generally you will have to pay for treatment in advance before being able to reclaim some of the costs!
- After arrival you will need to have your insurance plan validated with a public insurance provider: they have to confirm that your coverage corresponds to their comprehensive plans!
- The immigration office that approves your visa and residence application is extremely strict regarding which plans they accept! Most international plans are **NOT** sufficient for them! If you present a plan unacceptable to the immigration office, it will be rejected and

your visa application will be halted. This may cause several weeks delay in the visa process and result in you not being able to arrive in time for semester start.

If you decide to reject full student health coverage plans, we strongly recommend one of the following plans as they are acceptable to the immigration office and for validation:

- **Caremed:** [www.caremed-travelinsurance.com](http://www.caremed-travelinsurance.com)
- **UNION Health Insurance for foreign students**



Please note that travel insurance (= emergency coverage only) will be immediately rejected by the immigration office! Also, they will only accept insurance documents issued in either English or German!

### Proof of financial support

To obtain a visa/residence permit you have to prove that you have at least 659 euros for each month of your stay in Germany. The local immigration office is very strict and accepts only **three** kinds of financial proof (and nothing else!):

1. A **“Verpflichtungserklärung” (English = formal obligation) issued by a German embassy/consulate**
  - A “formal obligation” is an official document that only a German embassy or consulate abroad can issue. In the presence of an embassy official your parents/sponsor declare that they can support you financially with at least 659 euros per month during your studies in Germany. To prove this, they have to provide e.g. bank statements, statement from an employer about monthly income, etc.



The **“Verpflichtungserklärung”** is the easiest and most convenient option for you.

### 2. A blocked German bank account (“Sperrkonto”)

- This is a specific type of German bank account. Regardless of how much money you deposit in the account, you will only have access to a previously agreed amount of money per month. This monthly amount has to be at least 659 euros. The block can only be cancelled with written permission from the responsible immigration authority.
- Must be with a **German** bank!
- How to open a blocked account from your home country:  
Write an email to the international students section of Deutsche Bank at [db.student@db.com](mailto:db.student@db.com). State that you need a Sperrkonto (= blocked account) for your studies in Germany. You will receive an application form and a list of documents you need to submit. Fill out the documents and go to a German embassy. They have to verify all the documents and sign them. Send everything to Deutsche Bank. They will set up the account for you. Then you transfer money into it and they set up the blocked amount. You will then receive written confirmation of the account and the blocked amount, which you need in order to apply for the residence permit. The whole process may take 6 to 8 weeks. Start this process accordingly before handing in your visa application.
- How to open a blocked account after arrival at EBS (only for students who do NOT need a visa to enter Germany! Nationals from visa-waiver countries):

Go to a branch of Rheingauer Volksbank in Oestrich-Winkel or Deutsche Bank in Wiesbaden. In our experience, this process is faster with the Rheingauer Volksbank and takes two to three weeks.

Please bring your passport, EBS student ID and your accommodation registration confirmation with your address in Germany. Open a normal bank account. Once the account is open, transfer money to your account. Please transfer the total amount for the duration of your stay in Germany. Once the money is in your account, the bank will put a block on it and provide a confirmation letter for you, which you need to hand in with your residence permit application. The block will allow you to withdraw only a certain amount of money per month.

### 3. A scholarship certificate; can be accepted if it states

- your full name
- the exact time period of your scholarship (start day and end day)
- the exact amount of money you will receive per month (if the document says e.g. "5000 euros per semester", **it will be unacceptable to the immigration office!**).

If your scholarship is less than 659 euros per month, you will need to open an additional blocked bank account to cover the missing amount per month.

### Registering your accommodation with the local authorities

Within 10 days of your arrival, you need to register your accommodation with the local authorities ("*Einwohnermeldeamt*") of your city/municipality.



### You need to bring:

- your passport
- your exact address and the name of your landlord (if possible bring your rental contract!)
- 8 euros registration fee (only if you need to apply for a residence permit).

### Where to register:

#### Oestrich-Winkel:

Paul-Gerhard-Weg 1, 65375 Oestrich-Winkel

Monday	8.00am – 12.00 noon
Tuesday	7.00am – 12.00 noon
Wednesday	8.00am – 2.00pm
Thursday	8.00am – 12.00 noon and 3.00pm – 6.00pm
Friday	8.00am – 12.00 noon
Saturday	9.00am – 12.00 noon

#### Eltville (including Hattenheim):

Gutenbergstraße 13, 65343 Eltville

Monday – Friday	8.00am – 12.00 noon
+ Monday and Thursday	3.00pm – 6.00pm

#### Kiedrich:

Schulstraße 2, 65399 Kiedrich

Monday – Thursday	8.00am – 12.00 noon
Friday	8.00am – 12.30pm
+ Wednesday	1.00pm – 6.00pm

#### Geisenheim:

Bürgerbüro im Bachelin-Haus (Beinstraße 9),  
65366 Geisenheim

Monday – Friday	8.00am – 12.30pm
+ Tuesday and Thursday	2.00pm – 6.00pm
+ first Saturday in the month	10.00am – 12.00 noon

#### Wiesbaden:

Dotzheimer Straße 6-8, 65185 Wiesbaden

Monday, Tuesday, Thursday, Friday	8.00am – 6.00pm
Wednesday	8.00am – 8.00pm
Saturday	10.00am – 2.00pm

## Residence Permit

According to your nationality, you have arrived in Germany either with a visa or with your passport. After registering your accommodation with the local authorities the next step is to apply for a residence permit!

You need to apply for a residence permit (German: *Aufenthaltstitel*) if you

- do NOT own a valid passport of a **Schengen Member** state,
- want to stay in Germany for more than **90 days**,
- come to Germany for **study** purposes.



Please note: If your student visa is valid for your entire stay in Germany, you do not need to apply for a residence permit. However, you do need to register your address at the local authorities.

The following documents are required when handing in the application:

- Application form
- 50 euros (one semester stay) / 100 euros (stay longer than one semester) processing fee (waived if you have proof that you are supported by the DAAD)
- EBS letter of acceptance in German
- Your passport (the original one!) \*
- A **biometric photo**\*
- Proof of adequate health insurance to cover your entire stay in Germany
- Your rental contract for accommodation in Germany
- Proof of at least 659 euros for each month of your stay in Germany (blocked account; scholarship statement or formal obligation/*Verpflichtungserklärung*),

- The document ***Aufenthaltsbescheinigung***\* that you received when you registered your accommodation in Germany (see page 126).

\* Please hand in an original biometric photo, your original passport and the original *Aufenthaltsbescheinigung*. All other documents should be handed in as copies as they will not be returned by the immigration office.

### Application form:

The form needs to be completed in **German!** Please make sure to complete **all** sections of the document!

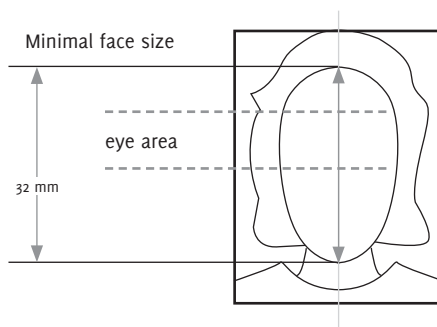
Don't forget to sign your name on the last page!

### Biometric photo:

The picture needs to fulfil certain criteria in order to be accepted by the authorities!

- Every professional photo studio knows what to do when you ask for a **biometric** photo.
- You can go, for example, to:  
Foto Heyer, Winkler Straße 67 in Geisenheim.
- Many photo booths in Wiesbaden (e.g. at the railway station or Luisen Forum) also take biometric photos.

### Sample:



**Health Insurance criteria:**

The insurance statement needs to fulfil the following criteria:

- be issued in GERMAN or ENGLISH
- list details of insurance cover
- clearly state geographical scope of cover: e.g. “Germany”, “Schengen States”, “worldwide”
- provide cover for up to at least 30,000 euros
- be a “full” insurance plan, not only emergency travel coverage!
- has to be valid for your entire stay in Germany
- give specific dates of coverage.

Please check section above “**Proof of health insurance**” for recommended health insurance providers.

**Rental Contract:**

Your rental contract needs to contain the following information:

- your exact address
- your name
- your landlord’s name
- the rental period

and must be signed by both you and your landlord!

**Proof of 659 euros per month:**

To obtain a residence permit you have to show proof that you have at least 659 euros available for each month of your stay in Germany.

The local immigration office is very strict and accepts only **three** kinds of financial proof. For details please see previous section “**Proof of financial support**”.

Please note that the immigration office in Wiesbaden does NOT accept a formal obligation as proof of financial support for your residence permit application.

**Aufenthaltsbescheinigung:**

You will receive this document when registering your accommodation with the local authorities. Please note that the document “*Aufenthaltsbescheinigung*” is only valid for 4 weeks. If your *Aufenthaltsbescheinigung* is older than that when handing in the residence permit application, you will need to request a new one from the local authorities.



The document “*Aufenthaltsbescheinigung*” is only valid for 4 weeks.

The residence permit application is processed by the local immigration office in Bad Schwalbach or in Wiesbaden depending on your place of residence.

**Residence Permit for ‘job search’**

Since August 2012, international students with a non-EU passport and a German university degree have the possibility to apply for a residence permit for the purpose of ‘job search’. This special residence permit enables you to stay in Germany and search for a job for a period of 18 months after graduating from a German university. For more information please contact your International Programmes Office or the responsible immigration office.

**Addresses:**

*Ausländerbehörde* Bad Schwalbach  
(Foreigners registration office)

Street: Heimbacher Straße 7

City: 65307 Bad Schwalbach

Phone +49 6124 510 0

Opening Hours according to website:

Monday - Friday 8.00am – 11.30am

+ Tuesdays 2.00pm – 5.30pm

*Ausländerbehörde* Wiesbaden

Street: Alcide-de-Gasperi-Straße 1-3

City: 65197 Wiesbaden

Phone +49 611 31 2112

Opening Hours according to website:

Monday 8.00am – 12.00 noon

Wednesday 8.00am – 12.00 noon

2.00pm – 6.00pm

Friday 8.00am – 12.00 noon



# Insurance and Health Care

## Health Insurance

By law, all students **MUST** have sufficient health cover for their stay in Germany to become registered as a student at a German university and/ or to apply for a student visa/residence permit.

**EU students** are normally sufficiently covered by their national insurance plan. Please submit a copy of your European Health Insurance Card (front and back page) valid for your entire stay at EBS.

**Non-EU students** should be careful in selecting a health insurance plan as it has to satisfy the very strict requirements of the university **AND** the immigration office (for visa/residence permit application).

We strongly recommend that students purchase full German student health coverage for their period of study at EBS. For further details please refer to the section above **“Proof of health insurance”**.

## Medical Treatment

Besides general practitioners, you will also find specialist doctors throughout the area.

Usually, you need to make an appointment to see a doctor. However, if you are in acute pain, you can also go without an appointment.

The names, addresses and phone numbers of doctors in the area can be found in the classified directory /Yellow Pages (German: *“Gelbe Seiten”*) where they are listed according to their specialization. The Yellow Pages are available either online or in hard copy at the local registration office.

You are free to choose which doctor you wish to go to. However, if possible, ask somebody to recommend a specific doctor.

## Doctors

### Dr Bennie Nelson

Behlstraße 4  
65366 Geisenheim  
Phone +49 6722 71 33 3

### Dr Irene Hufnagel

An der Basilika 9  
65375 Oestrich-Winkel  
Phone +49 6723 999 296

### Dr Achim Wallau

Rheinstr. 31  
65185 Wiesbaden  
Phone +49 611 34 13 28 67

### Dr Ulrich Kau

Gartenstraße 4  
65375 Oestrich-Winkel  
Phone +49 6723 34 25

### Dr Erich Knobloch

Hauptstraße 102  
65375 Oestrich-Winkel  
Phone +49 6723 50 73

## Dentists

### Dr Michael Gossler

Hallgartenerstraße 1  
65375 Oestrich-Winkel  
Phone +49 6723 87 27 70

### Dr Andrea Wahl

Sonnenberger Str. 100  
65193 Wiesbaden  
Phone +49 611 56 16 11

### Dr Rolf Basting

Hauptstraße 58  
65347 Eltville-Hattenheim  
Phone +49 6723 28 81

### Dr Almut Frohnweiler

Rüdesheimer Straße 40  
65366 Geisenheim  
Phone +49 6722 7 14 40

## Gynecologists

### Dr A. Ritzkow

Rheingaustraße 13  
65375 Oestrich-Winkel  
Phone +49 6723 50 20

### Dr Sheila De Liz

Kirchgasse 40  
65183 Wiesbaden  
Phone +49 611 37 45 08



## Hospitals

St. Josef-Krankenhaus  
Eibinger Straße 9  
65385 Rüdesheim  
Phone +49 6722 49 00

Sankt Josefs-Hospital Wiesbaden  
Beethovenstraße 20  
65189 Wiesbaden  
Phone +49 611 177 ext. 0

Asklepios Paulinenklinik  
Geisenheimer Straße 10  
65197 Wiesbaden  
Phone +49 611 847 ext. 0

HSK, Dr. Horst Schmidt Kliniken GmbH  
Ludwig-Erhard-Straße 100  
65199 Wiesbaden  
Phone +49 0611 4323 15



The Consulate General of the United States of America maintains a list of English-speaking practitioners in Wiesbaden and other cities of the area on the following website: <http://germany.usembassy.gov/english-speaking-services/hessen---doctors-and-hospitals.pdf>

## Emergency Call 112

112 is the free-of-charge phone number you can use to call an ambulance (Krankenwagen) in the case of a medical emergency.

Should you experience an emergency whilst travelling on a major road (motorway, trunk road, main road), look out for the white marker posts. Provide the information on the post when calling an ambulance, so they know exactly where to find you (e.g. “kilometre 107 on road B42”). The marker posts also have arrows pointing in the direction of the nearest emergency phone (orange column) along the road.

## Pharmacies

In Germany you can only buy medication and drugs from pharmacies (*Apotheke*). These should not be confused with drug stores (*Drogerie*) where, at most, you can buy cough syrup or other weaker medical and health products.

There are two types of medication: over-the-counter drugs and prescription-only medicine. You can only buy the latter if a doctor has prescribed them and you take the prescription to a pharmacy.

Some medicines that may be available without a prescription in your home country need to be prescribed by a doctor in Germany (e.g. antibiotics).

You will need to pay for your medication yourself. Afterwards, it is possible to submit the receipts to your insurance company to claim a refund (check details with your insurer).

### Pharmacies in Oestrich-Winkel

Adler Apotheke  
Rheingaustraße 56  
65375 Oestrich  
Phone +49 6723 9198 0

Rhabanus Apotheke  
Hauptstraße 43a  
65375 Oestrich-Winkel  
Phone +49 6723 3344

Lenchen Apotheke  
Rheingaustraße 43  
65375 Oestrich-Winkel  
Phone +49 6723 7720

General opening hours of pharmacies:  
Weekdays: 9.00am – 6.30pm (some chemists  
are closed on Wednesday afternoons)  
Saturdays: 9.00am – 1.00pm

### Pharmacies in Wiesbaden

Apotheke im Liliencarré  
Bahnhofsplatz 3  
65189 Wiesbaden  
Phone +49 611 1 66 77 04  
Opening hours:  
Weekdays: 8.30am – 8.00pm  
Saturdays: 9.00am – 8.00pm

Cäcilien-Apotheke  
Mauergasse 16  
65183 Wiesbaden  
Phone +49 611 37 04 26  
Opening hours:  
Weekdays: 8.30am – 7.00pm  
Saturdays: 8.30am – 4.00pm

A list of pharmacies in Wiesbaden can also be  
found at: [http://www.dasoertliche.de/Themen/  
Apotheken/Wiesbaden.html](http://www.dasoertliche.de/Themen/Apotheken/Wiesbaden.html)

### Emergency Services

Pharmacies in Germany operate a rota system to ensure that at least one pharmacy in the area is open at any time (also at night and on Sundays). However, in rural areas you may have to travel to the next village or town.

Details about which pharmacy in the area is on emergency duty are posted on pharmacies' doors or in the local newspaper under the heading "*Apothekennotdienst*". The rota schedules can also be found online. For the Rheingau area at <http://www.rhabanus-apotheke.de/Notdienst/notdienstplan.pdf> and for Wiesbaden at <http://www.aukamm-apotheke.de/notdienst>

# Healthcare, Wellness & Beauty



*Aktiv für Ihre Gesundheit*

**ADLER**  
**APOTHEKE**

C. Schmidt-Schließmann  
Rheingaustraße 56  
65375 Oestrich-Winkel  
Freecall: 0800/2766378  
www.apo-oestrich.de

**Lenchen Apotheke**

**Apotheker**  
**Marco Born**



Rheingaustraße 43  
65375 Oestrich-Winkel  
Fon 06723/7720  
Fax 06723/5457



**Privatpraxis**  
**Dr. med. Gunther Schwarz**

**Facharzt für**  
**Dermatologie und**  
**Venerologie**

**Facharzt für**  
**Allgemeinmedizin;**  
**Allergologie**

Alexandrastraße 1  
(Eingang  
Biebricher Allee 17)  
65187 Wiesbaden

**Tel. 0611 - 88 09 33 88**  
praxis@dr-schwarz-wiesbaden.de

www.dr-schwarz-wiesbaden.de

*Schönheit und Geist in Harmonie -  
Schönheit mit Sinn*



**Für eine sichtbar  
gesunde Haut!**

**Institut für**  
**Ästhetische**  
**Dermatologie**  
**und Kosmetik**

info@beautyandmind.de

Beauty & Mind GmbH  
Alexandrastraße 1  
(Eingang Biebricher Allee 17)  
65187 Wiesbaden

Telefon  
**0611 - 89 05 97 90**


www.beautyandmind.de

**glasses & contactlenses**



**augenoptik michael beierle**

Friedensplatz 2 . 65375 Oestrich-Winkel  
Fon 06723/998687 . info@beierle-optik.de  
[www.beierle-optik.de](http://www.beierle-optik.de)



**HAIRSTYLING**

**THERE IS NO BETTER WAY TO STYLE HAIR**

Herboltraum Hair • Herboltraum Hair • Herboltraum Hair  
Herboltraum Hair • Herboltraum Hair • Herboltraum Hair

**AUGENARZTPRAXIS AM DALLES**  
**PD Dr. Dietlind Friedrich**  
Altkönigstraße 3  
61476 Kronberg-Oberhöchstadt  
Telefon 06173 99 87 076  
**Bitte telefonische Terminabsprache**  
Website: [augen-schielen.de](http://augen-schielen.de)

Zeitgemäße spezialisierte Glaukomuntersuchungen,  
Kinderuntersuchungen, individuelle Beratung  
SPRACHEN: ENGLISCH/FRANZÖSISCH  
SAMSTAGS PRIVAT-SPRECHSTUNDE

# Money and Banking

## Opening a Bank Account (*Girokonto*)

All banks, savings banks and post banks in Germany offer more or less the same service, but the fees may differ.

As a student you are usually exempt from account management charges (*Kontoführungsgebühren*) but this is not automatic. To receive the discount, please show your EBS student ID card when opening the account. You have to open the account personally.

Please bring the following documents:

- your passport or national identity card
- proof of registration in Germany from the local resident's office (*„Einwohnermeldeamt“*)
- EBS student ID card.

As an account-holder, you can carry out monetary transactions at any branch office of your bank. You can withdraw cash free of charge from ATMs at any branch office. If you use the ATM of a different bank, you have to pay a service fee for each withdrawal.



Apply for online banking when opening your account. It is very useful in handling transactions!

## Transferring money

In Germany, it is not common to send cheques to people by post (e.g. rent to your landlord). There are various ways of conducting monetary transactions:

### Transfer (*Überweisung*)

Used to transfer money electronically from one account to another. You have to fill in a transfer form and hand it in at your bank or do it via your online banking portal.

### SEPA Transfer

Used to transfer money between two banks in the EU with few or no fees at all. Enquire at your bank for details. Don't use "normal" transfers between two banks in the EU as they have high service charges!

### Standing Order (*Dauerauftrag*)

If you have regularly recurring payments of the same sum, such as your monthly rent, it is convenient to arrange a standing order. The sum will be transferred automatically on the agreed date and to the recipient's account.

### Direct Debit (*Lastschrift*)

This is a handy method of payment if you have recurring sums which vary in size, such as the telephone bill. You give the recipient a direct debit authorization (*Einzugsermächtigung*) which authorises them to draw the respective amounts from your account. You can, of course, always cancel the authorization and stop the direct debit.

This method of payment may be new to you and you may be suspicious that it could be open to abuse. However, all direct debits are registered on your bank statement so that you can check them and revoke any incorrect debits.

The following banks have branches close to EBS Schloss Campus:

### Rheingauer Volksbank eG

- Rheingastr. 35, Oestrich  
Phone +49 6723 9194 0
- Kirchstr. 52, Winkel  
Phone +49 6723 9951 0
- Hauptstr. 28-30, Hattenheim  
Phone +49 6723 9192 0
- Mainzer Str. 18, Hallgarten  
Phone +49 6723 91881

### Wiesbadener Volksbank eG

- Schillerplatz 4  
65185 Wiesbaden

### Nassauische Sparkasse

- Markt 12, Oestrich  
Phone +49 6723 9199 45402
- Hauptstr. 32, Hattenheim  
Phone +49 6723 9186 46702
- Hauptstr. 41, Winkel  
Phone +49 6723 9186 45903
- Gutenbergstr. 15, Eltville  
Phone +49 6123 9228 46120
- Rheinstraße 42  
Wiesbaden  
Phone +49 611 36 40

### Postbank (Schreibwaren Fladung)

- Rheingastr. 47, Oestrich-Winkel

### Deutsche Bank

- Rheingauer Straße 23, Eltville  
No service desk, only ATM
- Wilhelmstraße 20-22, Wiesbaden  
Phone +49 611 356 0
- Kirchgasse 48  
65183 Wiesbaden

As a rule, banks are open Monday to Friday from 9.00am until 5.00pm with a break around lunchtime.

### ATM/Credit Cards

When you open an account, the bank will ask you if you want an ATM Card (“*EC-Karte*”, usually free of charge) and/or a credit card (“*Kreditkarte*”; costs vary). These cards as well as your individual security codes will be sent to you by post in separate envelopes within 1-2 weeks after opening the account.

**Make sure your name is clearly visible on your mailbox!**

Be careful of card fraud! Should you lose your credit/ATM cards, call your bank immediately to freeze the cards! Your bank will provide you with the necessary telephone numbers. Save them in your mobile phone to have them handy at all times in case of emergencies!



Outside normal banking hours there is a group emergency hotline to report losses and theft: **116 116**.

In Germany, it is not common to pay small amounts (less than 10 euros) with a credit card! Use cash or an ATM card instead.

Most shops and hotels in Europe accept German ATM and credit cards. Signs on the door tell you what the shops accept:

- EC or MAESTRO sign = ATM cards accepted
- VISA/MASTER/ etc. signs = credit cards accepted

# Phone and Internet

## Landline telephone

If you are staying in Germany for a year or longer, you may consider getting a landline telephone. Different providers are available such as

- **Deutsche Telekom:**  
www.telekom.de/Tariftabelle  
Phone 0800 3355222
- **Alice:** <http://www.alice-dsl.de>  
Phone 0800 4110411
- **1&1:** [www.1und1.de](http://www.1und1.de)  
Phone 02602 96 9708



### Please note:

These companies usually sell contracts which run for a set period (12 or 24 months) and additionally need to be cancelled in writing three months before the date of termination. If you are not staying in Germany for this length of time, ask about short-term options!

Make sure you enquire about the modalities for cancelling the contract! Most contracts need to be terminated in writing 1-3 months in advance. If you do not cancel your contract correctly, the bills will follow you home and cost a lot of money!

Prices vary according to the options you choose. Packages of landline + internet usually cost between 20 – 50 euros per month.

Be prepared that the company may charge a one-off installation fee of between 0 and 100 euros.

## Mobile phones

Many providers sell long-term mobile phone contracts (for 12 or 24 months). However, if you stay in Germany for one or two semesters only, the most convenient option is a pre-paid mobile phone! A pre-paid phone does not involve a contract or monthly fee. You purchase a certain amount (e.g. 10 euros), charge it to your account and then talk as long as the 10 euros last. If you do not use the phone, you do not pay.

Pre-paid deals are offered by a variety of providers and can be purchased for example at supermarkets (e.g. ALDI), drug stores (e.g. dm), phone companies (e.g. O2 or Vodafone), and electronic stores (e.g. Saturn or Media Markt). Compare the most up-to-date offers for the cheapest options!

Check if your mobile phone works in Germany! If it does not, you can buy cheap phones at telephone shops or electronic stores (sometimes even in supermarkets).

## Mobile internet

If you are staying in Germany for only one semester, you may consider purchasing pre-paid mobile internet. Deals are offered by the same providers listed above under “Mobile phones” and work the same way. You have to buy a starter package with a “web stick” which usually costs between 40 and 60 euros.

## Long distance and international calls

If you want to call your friends and families at home you have several options:

- **Skype:** [www.skype.com](http://www.skype.com)

- **Voipstunt:** <http://www.voipstunt.com/en/index.html>
- **Prefix-numbers:** <http://www.billiger-telefonie-ren.de/telephone-tariffs/>. Dial: “prefix number” + country code + area code + phone number. The charges for the call will be billed to your regular landline or mobile phone account. Pay attention to the valid time frame for the cheap prefix-number.

## Cars and Transportation

In order to drive a car in Germany you have to have a full driving licence. Apart from a German driving licence, “full” driving licences include EU driving licences, national licences issued in your own country (in many cases a German translation is required) and international driving licences issued in your own country.

The translation of national driving licences has to be done by a German diplomatic mission, a national automobile association or the German Automobile Association (ADAC).

Rather than having your national licence translated, you are recommended to obtain an international driving licence as this is generally known and accepted.

Foreign and international driving licences are only valid for six months after entering Germany. Even if you stay for just one day longer, you will have to obtain a German licence if you wish to continue driving.

You are liable to very high fines if you are caught driving without the proper documents.

Therefore, you are strongly advised to apply for a German driving licence 3 months before your own licence runs out as processing sometimes takes considerable time.

### Parking

If you have a car whilst in Germany, take care when parking! (a *Knolle* or *Knöllchen*, derived from “*Protokoll*”) for incorrect parking currently costs anything up to 40 euros. If your car has been towed away, you usually have to pay about 130 euros to “release” it.

In towns, it is better to use a multi-storey car park. In most car parks there are spaces close to the entrance specially reserved for single women drivers and families. Please park within the parking signs, park in the direction of the traffic (particularly in one way streets), keep entrances clear and use the blue parking disc inside your car (which can be obtained free of charge from local authorities).

### Traffic regulations

Germans are passionate and, unfortunately, somewhat aggressive drivers and often ignore the recommended speed limit of 130 km/h on German motorways. Traffic regulations, however, are taken very seriously and observed. Traffic offences are punished with high fines, penalty points and even loss of licence.

If there are no signs to the contrary, the speed limit in towns is 50 km/h, on main roads outside towns 100 km/h. You should definitely observe any speed restrictions in force on certain stretches of the motorway as there are often radar traps.

### Drinking and driving

If you have only drunk very little alcohol you are still considered capable of driving. The blood alcohol limit in Germany is 0.05 per cent and if you are over the limit your licence is at risk.

The limit for cyclists is 0.15 percent and if you are over this limit you might lose your driving licence, too. If you have had your license for less than two years, no blood alcohol at all is permitted.

### Taxis

Taxis are very expensive in Germany and therefore only recommended when public transport is not available. The nearest taxi companies in the region are:

Taxi Bob in Geisenheim,  
Phone +49 6722 99 00 0  
Wiesbadener Taxi-Zentrale  
Phone +49 611 33 33 33

### Car rental

You can rent a car at the airport or at Wiesbaden Central Station.

The main rental firms are:

Avis, Europcar, Sixt, Hertz.

You can find great deals at:

**[www.autoeurope.com](http://www.autoeurope.com)**

### Getting around by train

German cities are very well connected by train. The most important railway company in Germany is "*Deutsche Bahn*". Please check for connections and fares on their website:

**[www.bahn.de](http://www.bahn.de)**

The Eurail pass (**[www.eurail.com](http://www.eurail.com)**) is an interesting option for non-Europeans to get around Germany and Europe.

### Semester ticket

All students at EBS (also exchange students) automatically register for a semester ticket. The ticket allows students to use all public transport offered by the *Rhein-Main-Verkehrsverbund* RMV (**[www.rmv.de](http://www.rmv.de)**) including city and regional buses,

the underground, trams, and selected regional trains. The ticket costs 110 euros per semester at EBS Business School and 73.50 euros per trimester at EBS Law School.

### From Frankfurt Main airport

Frankfurt airport is very close to Wiesbaden and the Rheingau area and getting from Frankfurt airport to EBS is very easy. There are regular trains and S-Bahn trains (fast urban trains) which take you to Wiesbaden and/or Oestrich-Winkel. At the airport, follow the signs for the regional train station (*Regional Bahnhof*). You need to take the S8 or S9 to go to Wiesbaden (journey time from the airport approx. 30 minutes). If you want to continue your journey to the Rheingau (EBS Business School campus) you need to change to the local train going to Koblenz/Neuwiedt. The journey from Wiesbaden to EBS Business School campus takes approx. 20 minutes.



For more information please visit:  
**[www.frankfurt-airport.de](http://www.frankfurt-airport.de)**

### From Frankfurt Hahn airport

This is a little more difficult but still manageable. There is a shuttle bus connection between Frankfurt Hahn and Mainz Central Station with approx. 10 buses per day. Cost of the fare (single journey) is 13 euros. The journey takes about 1 1/2 hours. Once you have arrived at Mainz Central Station you can take a train to Wiesbaden and change there to the regional train to Oestrich-Winkel (direction Koblenz/Neuwiedt).



For more information please visit:  
**[www.hahn-airport.de](http://www.hahn-airport.de)**



## Living in Germany

As in all countries, there are certain norms of behaviour and politeness in Germany which you should observe to integrate easily with the native population. Many books and guides have been written about this topic but the best advice we can give you is: "Ask! Always ask when you are confused or bewildered, but never assume!"

Here are some general facts and tips for your interaction with German fellow students, professors, neighbours etc.

### Greeting people

As you may know, there are two styles of address in German: the formal "*Sie*" form and the more informal "*du*" form. Sometimes it can be slightly bewildering to know which one is appropriate in a specific situation.

### Informal speech

Students usually use informal style and call themselves by their first name. They greet each other without shaking hands saying "*Hallo*" or "*Grüß Dich*" and leave saying "*Tschüss*" or "*Bis bald*" (see you soon).

### Formal speech

The formal "*Sie*" form is generally used among adults who are not friends or family: with strangers, business partners, superiors (e.g. professors, employers), shop assistants, etc. Even colleagues often still use the formal "*Sie*" after they have been working together for years. Adults generally address each other in the formal "*Sie*" form and with "*Herr*" (Mr) or "*Frau*" (Ms) preceding the surname, possibly even a title: "*Guten Tag, Frau Dr Meier*".

Students should note that academic titles are very important in Germany! If someone has a doctorate it is polite to address them as *Herr Doktor Meier* or *Frau Doktor Müller*. Professors are usually addressed as "*Professor Meier*" or "*Professor Müller*". Of course, this is also a matter of individual style, age and upbringing. You will meet doctors and professors who prefer you to address them without a title or even by their first name. If this is the case, they will let you know! If you are not sure, always use the polite form to be on the safe side!

### To shake hands or not to shake hands?

The rule of thumb is: Do not shake hands with fellow students or in public offices, shops, etc. If you attend an interview or have an appointment with a professor, always shake hands. Just wait until the senior person (i.e. the professor or prospective boss) offers you his/her hand to shake.

### Punctuality

It cannot be denied that Germans place a lot of emphasis on punctuality. If you have an appointment with your professor there is one thing you certainly should not do - keep him or her waiting! Private appointments allow a little more scope, however, even friends or fellow students will think it impolite if you keep them waiting for too long.

## Invitations

Germans are rather reticent with invitations to begin with. Only good friends can just drop in on each other unannounced. When you are invited somewhere with a more official character, for instance to your professor's or boss's house, you should take a bunch of flowers with you for the host.

When you are invited to share a bowl of spaghetti with other students in their "WG" (*Wohngemeinschaft* = flat share) you do not need to take flowers with you, but a bottle of wine or a homemade dessert will certainly be welcome.

### Please! Thank you!

"*Bitte*", "*Bitte sehr*" is what you say when you give something to somebody, when you hold the door open for somebody, when you ask for something or make a request. If you have done someone a favour and he or she thanks you, you then say: "*Bitte, gern geschehen*" (roughly: "You're welcome"). If you accept something offered to you at table you answer with "*Ja, bitte*". "*Möchten Sie noch etwas trinken?*" ("Would you like anything else to drink?") "*Ja, bitte*" ("Yes, please"). The words "*Vielen Dank*" or "*Danke*" (Thank you very much) are a must-know in everyday interaction and cannot be used enough!

### Useful tips

Depending on whether you come from Europe or elsewhere in the world, you may or may not be amazed by many things in Germany. Germany has a bureaucratic system made up of administrative rules and regulations. During your stay at EBS you will be required to fill out a variety of forms and perform certain duties

for the authorities you may not be used to. You should never ignore a form or a bill! It always catches up with you sometime in the future!

Germans are generally exceptionally neat and tidy and take great care and pride in their property. Likewise, they expect you to respect their property. If you break or damage something, tell the owner immediately – you will be expected to replace or pay for it.

Germans are very house-proud and keep their property clean – it is common sense to keep a certain standard of cleanliness and hygiene (i.e. washing sheets and cleaning the toilet, throwing away rubbish).

There is a law in Germany about keeping quiet after a certain time of night. The times vary, but normally you have to keep the noise down after 10pm or 10.30pm. If you decide to have a party, warn your neighbours in advance. Late night parties in the middle of the week are not a good idea since your neighbours go to work early. If people are upset by the noise, they will call the police!

Heating, electricity and water are all expensive. If you leave your lights on all day, leave your heating on with the window open or use enormous quantities of water, then don't be surprised if your landlord presents you with a large extra bill when you move out!

Try to get accustomed to German parking laws – or ask someone where you can park. Officers from the Ordnungsamt go around checking if cars are properly parked (i.e. facing in the direction of driving or in designated parking spots). If you see no one else parking where you would like to park, it is probably not a good idea to leave your car there! Expect hefty fines when you disregard parking and traffic laws!

### Suggestions for further reading

If you would like to prepare yourself a little more for your stay in Germany and among Germans, there are a lot of interesting books and websites available. Here is a small selection to get you started:

#### Travel Guides and more:

- “Lonely Planet Germany” by Andrea Schulte-Peevers
- “Germany For Dummies” by Donald Olson

#### German Tourism Board website:

→<http://www.germany-tourism.de/ENG/>

#### Facts about Germany:

→<http://www.tatsachen-ueber-deutschland.de/en/> (book and website)

#### Germany and the Germans:

- DW World – World Service of the German radio station “*Deutsche Welle*”: →<http://www.dw-world.de/>: news stories, features and music from Germany, about Germany and the world, available in German and 30 other languages, fun multimedia German language courses online.
- “Germany: Unraveling an Enigma” by Greg Nees
- “Culture Shock! Germany – A Survival Guide to Customs & Etiquette” by Richard Lord
- “Germany – Culture Smart!: the essential guide to customs & culture” by Barry Tomalin

### Studying in Germany:

Publications by the German Academic Exchange Service (DAAD)

→<http://www.daad.de/deutschland/nach-deutschland/publikationen/en/>

- “*Zielland Deutschland* - Destination Germany” (German/English)
- “Study and Research in Germany. Annotated Web Links”

Scholarship database of the German Academic Exchange Service (DAAD)

→<http://www.daad.de/deutschland/stipendium/datenbank/en/12359-finding-scholarships/>

#### Humorous (but informative) books:

- “Springtime for Germany: or How I Learned to Love Lederhosen” by Ben Donald
- “The Awful German Language” by Mark Twain.

→<http://usa.usembassy.de/classroom/Mark%20Twain/Mark%20Twain%20Awful%20Broschuere.pdf>



*Yaoming He, finance major, School of Economics and Management, Tongji University, Shanghai, China, came to EBS Business School as a Bachelor dual degree student in spring 2011.*

*“In my junior year at Tongji University, Shanghai, without having any specific plan about my future I took a bold step to pursue a double degree in Germany, so I came here, to EBS Business School, where ultimately I had a wonderful, unforgettable experience for the following year and a half.*

*EBS lies beside the Rhine River and is located in a beautiful town named OeWi, short for Oestrich-Winkel, part of the Rheingau region that produces huge amounts of delicious German white wine. EBS is a business school that stands for responsibility, networking, internationality, and excellence. On my first day at EBS, I got the chance to witness how international the student body was. Besides the large number of German students on campus, more than 200 exchange students come to EBS each semester. For me, it’s great to get to know people from different backgrounds, understand where they are coming from, and really learn to know how to work with these people since that’s*

*something you will do in the future. Although almost all the courses here are delivered in English, learning German, undoubtedly, should be the first thing you need to do before starting your brand new journey at EBS and your life in Germany. International students are given the chance to attend various-level intensive German courses upon their arrival. Plus, orientation accompanied by staff members from the International Office will definitely make you feel the first sense of friendliness, warmth, and intimacy provided by this small campus.*

*Living and studying in a small town gives you several advantages. First, the convenience of commuting between home and school either by bike or by bus provides you with the motivation to stay at school or study in the library. Secondly, the proximity between students’ apartments gives you plenty of opportunities to attend house parties in order to maintain close relationships. The friendliness of the local residents also allows you to live a peaceful life and practice your German.*

*Given the world-class faculty, the rigour of the curriculum at EBS will equip you with the most cutting-edge knowledge in business, providing you not only with a good foundation in mathematics and business, but also with the skill sets that are necessary for job hunting and further graduate studies. I like to work with colleagues, as I believe teamwork creates more value and generates more opportunities than individuals working alone. EBS courses not only give you plenty of chances to work with others in group projects, but also give you a hands-on opportunity to attend lectures while working on real business projects at a corporate partner.*

Apart from academic work, EBS offers numerous student initiatives and associations which you can participate in during your spare time. Having an outgoing, sociable personality, I enjoy interacting and building new friendships with people. Acting as a student representative, I assisted German students in preparing for their stay in China and helped incoming exchange students to get used to their new life in Germany. While collaborating with German students in group projects and playing basketball with German students, I was able to practice my German which helped me to settle into studying and living in Germany. I am crazy about basketball. I played point guard for the basketball team and, as the only Asian player, represented EBS in the WHU Euromasters championship held in Koblenz in 2011. Thanks to my endeavours and sociability, I was honoured as the only winner of the DAAD Award 2011, with overwhelming nominations from professors, students and staff members.

Additionally, utilizing EBS excellent alumni network, the Career Services Center goes above and beyond to help students find internships as well as part and full-time jobs. The proximity to Frankfurt, the European financial hub, is a huge advantage for EBS, because it makes it so easy for professionals from all different industries that operate in Frankfurt to come on campus, providing students with broad opportunities and endless possibilities to network with well-known future employers. Through the help of EBS Career Services Center, I secured my first internship in Berlin in the summer of 2011, supporting a German start-up in business development to rapidly expand on the global market. Being an entrepreneur isn't easy. You should

have the vision, the courage to risk everything to chase your dream, and the persistence that most of us don't have because you have to pick yourself up and brush yourself off when things don't work the first time. EBS has given me all the prerequisites both academically and practically so that ultimately I will be able to establish my own enterprise in the future.

“Study Hard, Play Hard.” You are here not only to gain the competitive edge of being a successful business person, but also to enjoy real dynamic German life. After graduating from EBS in the summer of 2012, I knew where my interest lay, I knew what I was looking for and I knew the next step I should take. This is Yaoming He, and I am proud of being an “EBSler”, you will be too!”

**Edited by:**

EBS Universität für Wirtschaft und Recht

**Concept:**

Marketing EBS Universität für Wirtschaft und Recht

**Content:**

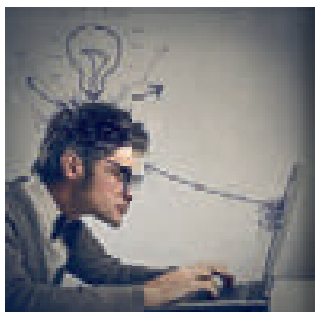
All contributing departments at EBS

**Design:**Alpha Informations GmbH, Lampertheim  
www.alphapublic.de**Printed by:**Krüger Druck + Verlag GmbH & Co. KG, Dillingen  
www.kdv.de

## Emergency Numbers

Police **110**Poison control centre **06131 19 240**Ambulance / Fire brigade **112**Rescue service / Ambulance service  
**1 92 22**Car breakdown (also watch for the orange columns on German motorways every few miles) **0800 66 83 663**Air Ambulance (Deutsche Rettungsflugwacht)  
**0711 70 10 70**Car insurance (central phone number)  
**0180 25 026****“Reiseruf” ADAC** (for calling somebody via radio in case of emergency or death)  
**0180 5 10 11 12**Report and freeze stolen bank/credit cards, mobile phones, online banking, etc. **116 116**


# Healthcare, Wellness & Beauty



TO SEE OR NOT TO SEE  
THAT'S THE KEY  
TO SUCCESS!

LOOKING FORWARD TO SEEING YOU:

WILHELMSTRASSE 42  
D-65183 WIESBADEN  
TEL. 0611-300311  
WWW.GABRICHOPTIK.DE



## Erfolg im Studium und Beruf.

### Exklusiver Service für Studierende.

Die Experten der BARMER GEK helfen Ihnen gerne bei allen Fragen rund um Ihr Studium.

#### BARMER GEK Rüdesheim

› Ihr Ansprechpartner: André Böhm  
Tel. 0800 33 20 60 51-6001\*

#### BARMER GEK Wiesbaden

› Ihr Ansprechpartner: Denis Asil  
Tel. 0800 33 20 60 51-1211\*

   [www.facebook.com/barmer.gek](http://www.facebook.com/barmer.gek)

**BARMER**  
**GEK** die gesund  
experten

\* Anrufe aus dem deutschen  
Festnetz und Mobilfunknetz  
sind für Sie kostenfrei!





**EBS Universität**

für Wirtschaft und Recht

Gustav-Stresemann-Ring 3

65189 Wiesbaden

Germany

Phone +49 611 7102 00

Fax +49 611 7102 1999

info@ebs.edu

**EBS Business School**

Rheingaustraße 1

65375 Oestrich-Winkel

**EBS Law School**

Gustav-Stresemann-Ring 3

65189 Wiesbaden

[www.ebs.edu](http://www.ebs.edu)